

# HI-TACAN Z RWY 10

TACAN Chan <b>19</b>	NIP <b>087°</b>	APCH CRS <b>087°</b>	Rwy ldg TDZE Arpt Elev	<b>8006</b> <b>21</b> <b>23</b>	[USN]	JACKSONVILLE NAS (TOWERS FLD)	(KNIP)
-------------------------	--------------------	-------------------------	------------------------------	---------------------------------------	-------	-------------------------------	--------

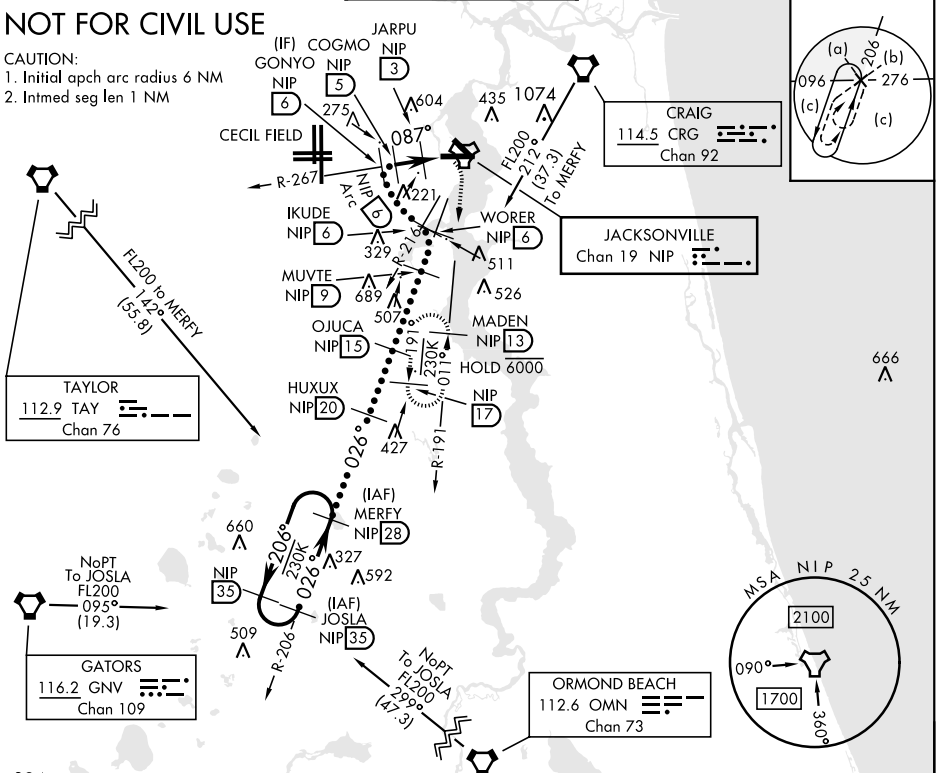
MISSED APPROACH: Climb to 2000 direct NIP TACAN, outbound R-191 to MADEN and hold.

\* When ALS inop, increase CAT CDE vis to 1½ miles.

ATIS <b>124.35 290.425</b>	APP CON <b>127.775 377.075</b>	NAVY JACKSONVILLE TOWER <b>125.15 (CTAF) 340.2</b>	GND CON <b>128.6 336.4</b>	CLNC DEL <b>134.775 0353.675</b>	ASR/ PAR
-------------------------------	-----------------------------------	---	-------------------------------	-------------------------------------	-------------

## NOT FOR CIVIL USE

- CAUTION:
- Initial apch arc radius 6 NM
  - Intmed seg len 1 NM



SE-3, 11 JUL 2024 to 08 AUG 2024

SE-3, 11 JUL 2024 to 08 AUG 2024

384	EMERG SAFE ALT 100 NM 2800	ELEV 23	TDZE 21						
MERFY R-206 (28)	HUXUX (20)	OJUCA (15)	WORER R-206 (6)	IKUDE R-216 (6)	GONYO R-267 (6)	COGMO (5)	JARPU NIP (3)	TACAN	MADEN NIP (13)
FL200 13,000	8000	4000	1700	1600	1500	1400	760	HIVN (1.3)	
↑2.97° TCH 51									
CATEGORY	C	D	E						
S-10 *		420-¾	399 (400-¾)						
CIRCLING	560-1½ 537 (600-1½)	780-2½ 757 (800-2½)	920-3 897 (900-3)						
				HIRL Rwy 10-28					

JACKSONVILLE, FLORIDA 30°14'N-81°41'W JACKSONVILLE NAS (TOWERS FLD) (KNIP)

Orig 03NOV22

# HI-TACAN Z RWY 10

