

JACKSONVILLE, FLORIDA

RNAV (RNP) Y RWY 28

APCH CRS	Rwy ldg	9003
276°	TDZE	13
	Arprt Elev	23

(USN)

JACKSONVILLE NAS (TOWERS FLD) (KNIP)

RNP AR APCH

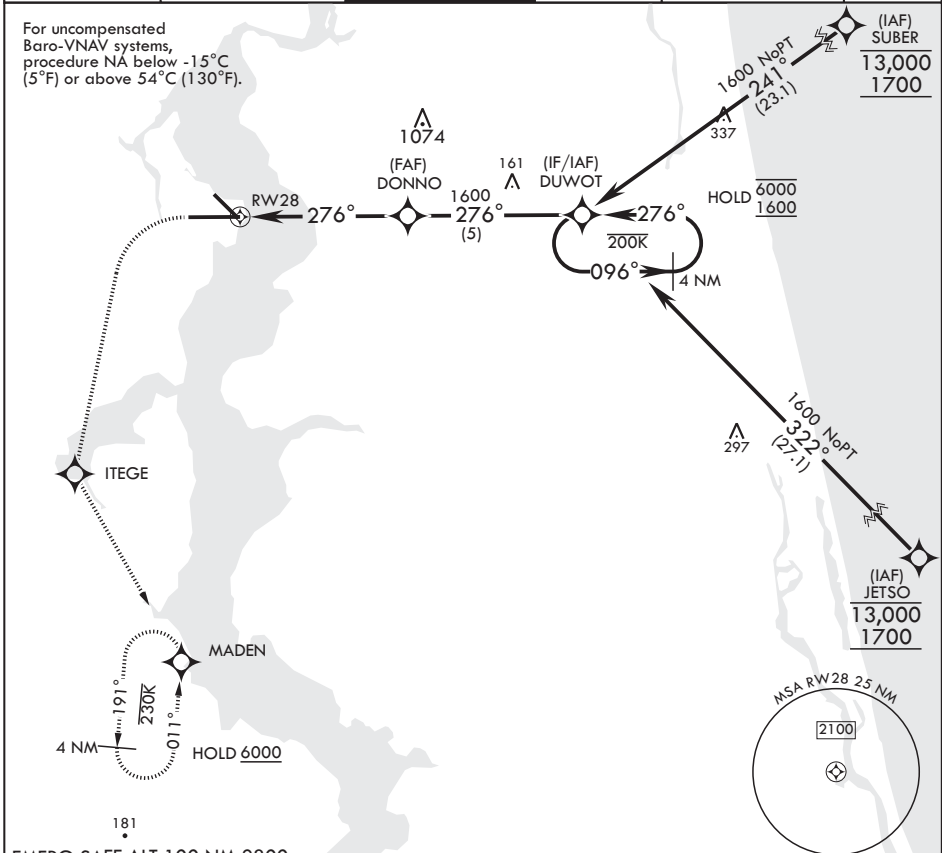
▼ * When ALS inop increase CAT ABCD vis to 7/8 mile.



MISSED APPROACH: Climb to 600 then climbing left turn to 2000 direct ITEGE, track 156° to MADEN and hold.

ATIS	APP CON/DEP CON	TOWER	GND CON	CLNC DEL	ASR/PAR
124.35 290.425	127.775 377.075	125.15 (CTAF) 340.2	128.6 336.4	134.775 0 353.675	

For uncompensated Baro-VNAV systems, procedure NA below -15°C (5°F) or above 54°C (130°F).



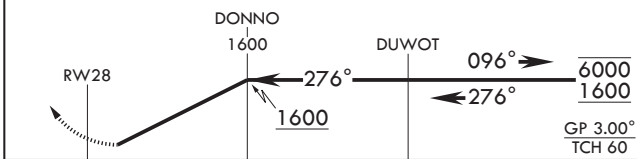
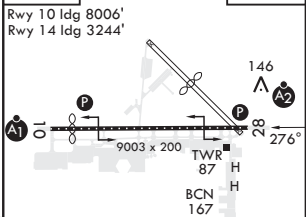
SE-3, 11 JUL 2024 to 08 AUG 2024

SE-3, 11 JUL 2024 to 08 AUG 2024

EMERG SAFE ALT 100 NM 2800

600	2000	ITEGE	tr 156°	MADEN
↑ crs 276°	↙	◆	↖	⊙

ELEV 23	TDZE 13
---------	---------



CATEGORY	A	B	C	D
RNP 0.30 DA*	310-3/4	297	(300-3/4)	

HIRL Rwy 10-28

JACKSONVILLE, FLORIDA

30°14'N - 81°41'W

JACKSONVILLE NAS (TOWERS FLD) (KNIP)

Amdt 1 03NOV22

RNAV (RNP) Y RWY 28