

KEY WEST, FLORIDA

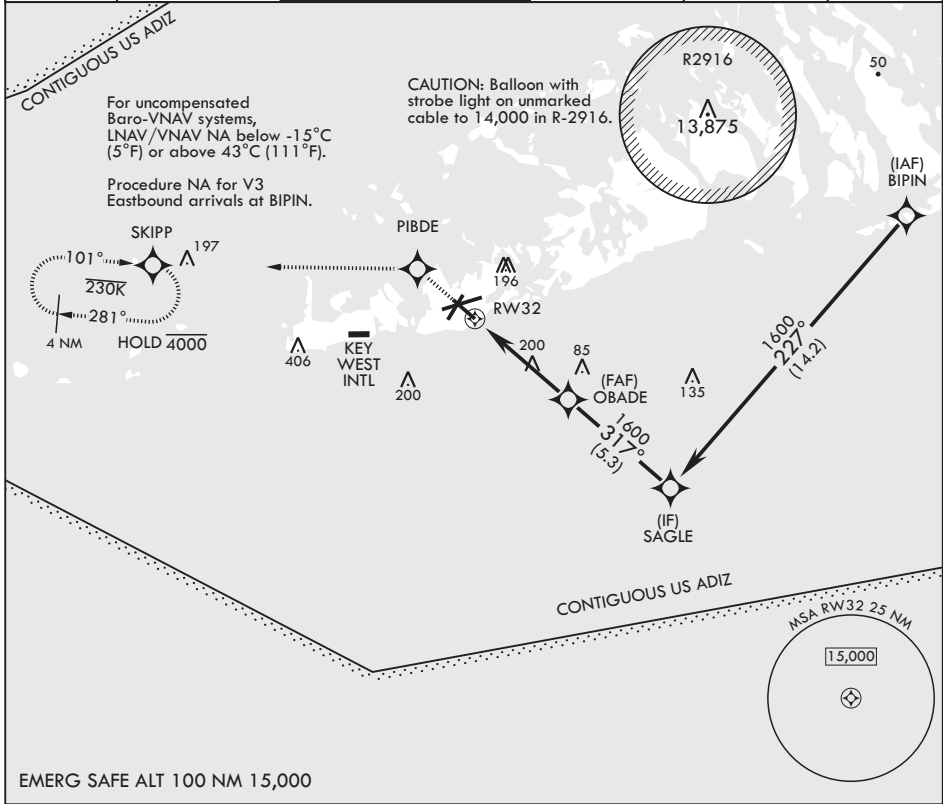
RNAV (GPS) RWY 32

APCH CRS	Rwy Idg	7000
317°	TDZE	4
	Arprt Elev	6

AL-214 (USN) KEY WEST NAS (BOCA CHICA FLD) (KNQX)

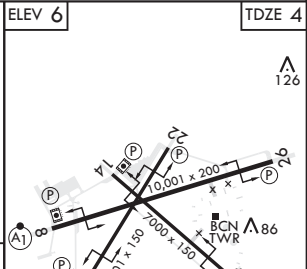
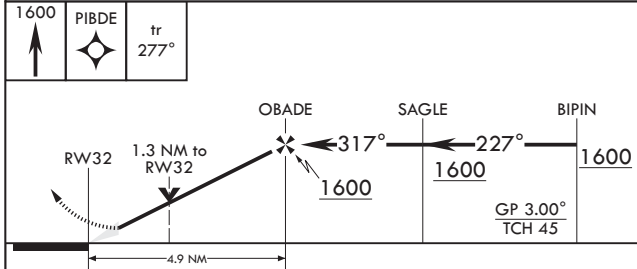
RNP APCH MISSED APPROACH: (Do not exceed 230 KIAS until PIBDE.) Climb to 1600 direct PIBDE, track 277° to SKIPP and hold, continue climb-in-hold to 1600.

ATIS*	APP CON	NAVY KEY WEST TOWER*	GND CON	CLNC DEL	ASR/PAR
307.025	124.025 313.7	118.575 340.25	121.7 336.45	121.2 357.4	



SE-3, 11 JUL 2024 to 08 AUG 2024

SE-3, 11 JUL 2024 to 08 AUG 2024



CATEGORY	A	B	C	D
LNAV/VNAV DA	254-¾		250	(300-¾)
LNAV MDA	460-1	456 (500-1)	460-1½	456 (500-1½)
◻ CIRCLING	460-1 454 (500-1)	500-1 494 (500-1)	500-1½ 494 (500-1½)	560-2 554 (600-2)

ELEV 6 TDZE 4

GP 3.00° TCH 45

HIRL all Rwys

KEY WEST, FLORIDA
Amdt 2 23FEB23

24°34'N - 81°41'W

KEY WEST NAS (BOCA CHICA FLD) (KNQX)

RNAV (GPS) RWY 32