

KEY WEST, FLORIDA

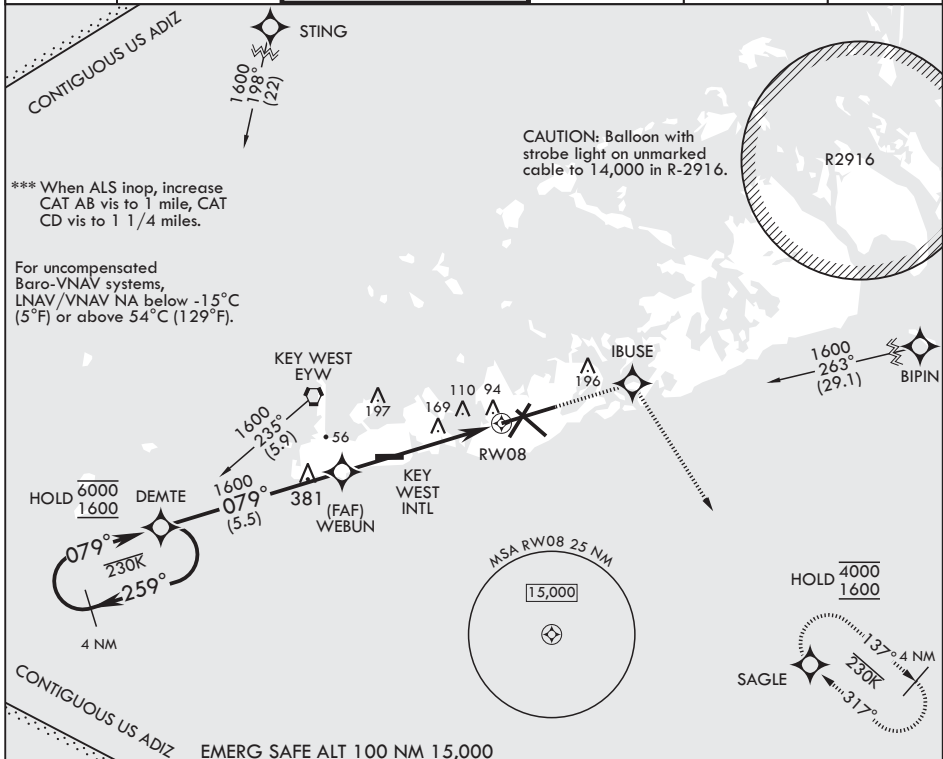
# RNAV (GPS) RWY 8

WAAS CH 65107 W08A	APCH CRS 079°	Rwy ldg TDZE 10,001 Arprt Elev 6
--------------------------	------------------	---

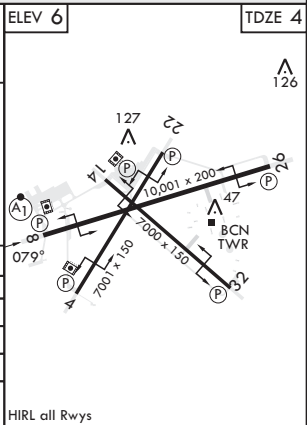
AL-214 (USN) KEY WEST NAS (BOCA CHICA FLD) (KNQX)

RNP APCH * When ALS inop, increase vis to 3/4 mile. ** When ALS inop, increase vis to 1 1/4 miles.	ALS-1 	MISSED APPROACH: (Do not exceed 230 KIAS until IBUSE) Climb to 1600 direct IBUSE, track 154° to SAGLE and hold.
--	-----------	---

ATIS* 307.025	APP CON 124.025 313.7	NAVY KEY WEST TOWER* 118.575 340.25	GND CON 121.7 336.45	CLNC DEL 121.2 357.4	ASR/PAR
------------------	--------------------------	--	-------------------------	-------------------------	---------



4 NM Holding Pattern	1600	IBUSE	tr 154°	ELEV 6'	TDZE 4'
DEMOTE	WEBUN	RW08			
6000 ← 259°	← 079°	1.2 NM to RW08			
1600 → 079°	1600				
GP 3.00°		4.9 NM			
TCH 45					
CIRCLING					
CATEGORY	A	B	C	D	
LPV DA*	204-1/2	200	(200-1/2)		
LNAV/VNAV DA**	427-3/4	423	(500-3/4)		
LNAV MDA***	440-1/2 436 (500-1/2)	440-3/4 436 (500-3/4)			
	440-1 434 (500-1)	500-1 494 (500-1)	500-1 1/2 494 (500-1 1/2)	560-2 554 (600-2)	



KEY WEST, FLORIDA

24°34'N - 81°41'W

KEY WEST NAS (BOCA CHICA FLD) (KNQX)

Amdt 3 23FEB23

# RNAV (GPS) RWY 8

SE-3, 11 JUL 2024 to 08 AUG 2024

SE-3, 11 JUL 2024 to 08 AUG 2024