

KEY WEST, FLORIDA

# VOR/DME RWY 26

EYW VORTAC <b>113.5</b> Chan <b>82</b>	APCH CRS <b>270°</b>	Rwy ldg <b>10,001</b> TDZE <b>6</b> Arprt Elev <b>6</b>
--	-------------------------	---

AL-214 [USN]

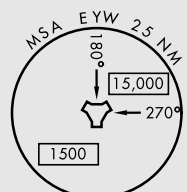
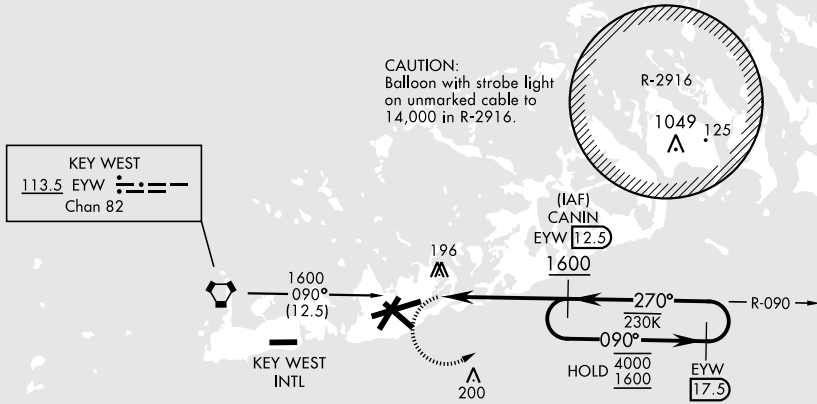
KEY WEST NAS (BOCA CHICA FLD) (KNQX)

RADAR required

MISSED APPROACH: Climb to 500, then climbing left turn to 1600 to intercept EYW VORTAC R-090 to CANIN and hold.

ATIS ★ <b>307.025</b>	NAVY KEY WEST APP CON <b>124.025 313.7</b>	NAVY KEY WEST TOWER ★ <b>118.575 340.25</b>	GND CON <b>121.7 336.45</b>	CLNC DEL <b>121.2 357.4</b>	ASR/PAR
--------------------------	---	--	--------------------------------	--------------------------------	---------

CAUTION: Final approach course crosses the extended runway centerline 5018' from threshold.



EMEG SAFE ALT 100 NM 15,000

		ELEV 6	TDZE 6	
<p>UBUYA 7.9</p> <p>270°</p> <p>090°</p> <p>270°</p> <p>4000</p> <p>1600</p> <p>1600</p> <p>2.72°</p> <p>TCH 43</p> <p>0.9 NM</p> <p>4.6 NM</p>		<p>VGSI and descent angles to coincident. (VGSI angle 3.00/TCH 43)</p> <p>CANIN EYW R-090 12.5</p> <p>EYW 17.5</p>		
CATEGORY	A	B	C	D
S-26	460-1	454 (500-1)	460-1 1/8	454 (500-1 1/8)
CIRCLING	460-1 454 (500-1)	500-1 494 (500-1)	500-1 1/2 494 (500-1 1/2)	560-2 554 (600-2)
HIRL all rwys				

KEY WEST, FLORIDA  
Amdt 4 23FEB23

24°34'N-81°41'W

KEY WEST NAS (BOCA CHICA FLD) (KNQX)

# VOR/DME RWY 26

SE-3, 11 JUL 2024 to 08 AUG 2024

SE-3, 11 JUL 2024 to 08 AUG 2024