

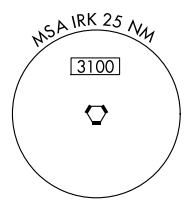
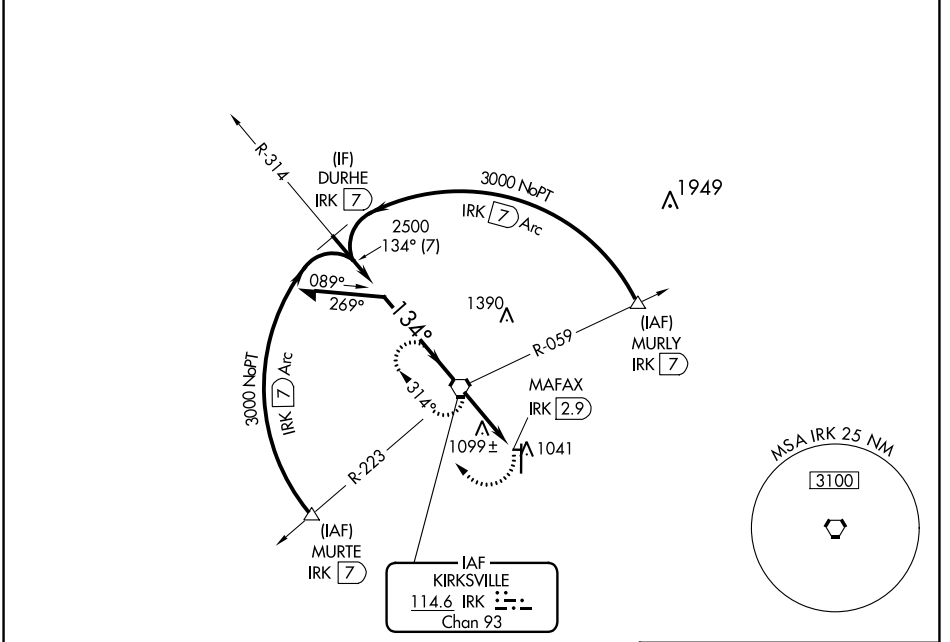
VORTAC IRK 114.6 Chan 93	APP CRS 134°	Rwy Idg TDZE Apt Elev N/A N/A 966
--	------------------------	---

VOR-A

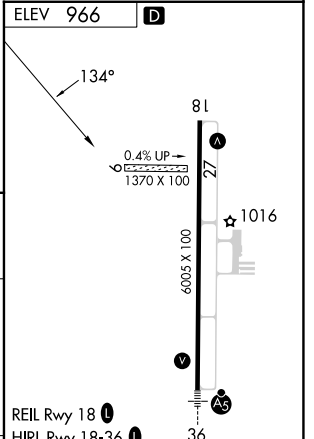
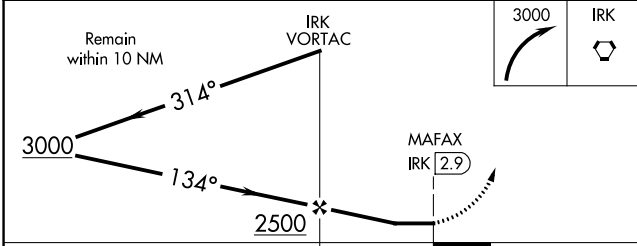
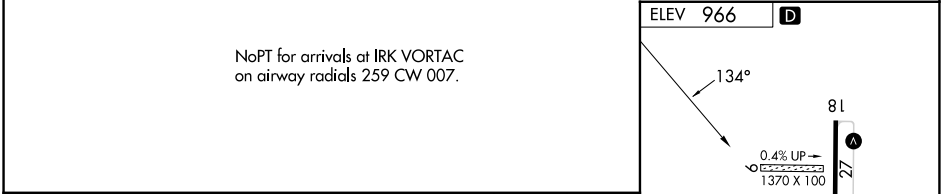
KIRKSVILLE RGNL (IRK)

▼ Circling NA to Rws 9 and 27.
MISSED APPROACH: Climbing right turn to 3000 direct IRK VORTAC and hold, continue climb-in-hold to 3000.

ASOS 121.125	KANSAS CITY CENTER 132.6 370.9	UNICOM 122.8 (CTAF) 0
------------------------	--	--



NoPT for arrivals at IRK VORTAC on airway radials 259 CW 007.



CATEGORY	A	B	C	D	FAF to MAP 2.9 NM					
CIRCLING	1400-1 434 (500-1)	1440-1 474 (500-1)	1460-1½ 494 (500-1½)	1540-2 574 (600-2)	Knots	60	90	120	150	180
					Min:Sec	2:54	1:56	1:27	1:10	0:58

NC-3, 11 JUL 2024 to 08 AUG 2024

NC-3, 11 JUL 2024 to 08 AUG 2024