

RNAV (GPS) RWY 24

LAKEHURST MAXFIELD FLD,
 (JOINT BASE MC GUIRE DIX LAKEHURST) (KNEL)

WAAS Chan 60342 W24A	APCH CRS 242°	Rwy Idg 5002 TDZE 101 Arpt Elev 101
--	-------------------------	--

AL-223 [USN]

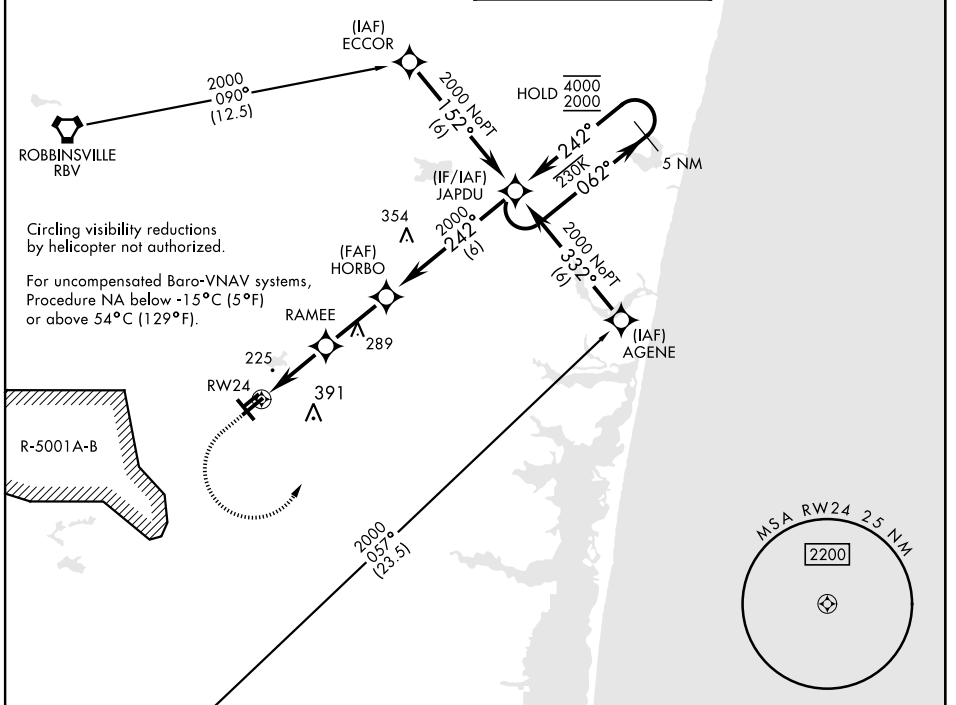
(JOINT BASE MC GUIRE DIX LAKEHURST) (KNEL)

RNP APCH
 ▼ * When ALS inop, increase vis to ¾ mile.
 ** When ALS inop, increase vis to 1½ miles.
 *** When ALS inop, increase CAT AB vis to 1mile; CAT CD vis to 1¼ miles.



MISSED APPROACH: Climb to 700 then climbing left turn to 2000 direct JAPDU and hold.

ATIS★ 276.525	MC GUIRE APP CON 126.475 363.8	TOWER★ 127.775 360.2	GND CON 118.375 307.375
-------------------------	--	--------------------------------	-----------------------------------



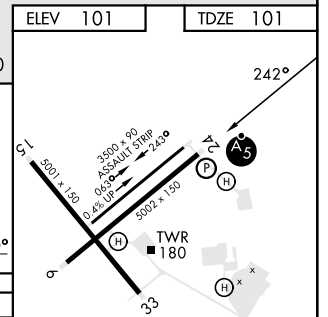
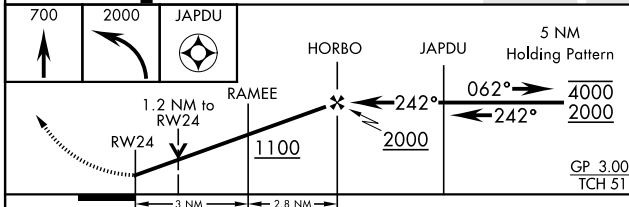
Circling visibility reductions by helicopter not authorized.

For uncompensated Baro-VNAV systems, Procedure NA below -15°C (5°F) or above 54°C (129°F).

NE-2, 11 JUL 2024 to 08 AUG 2024

NE-2, 11 JUL 2024 to 08 AUG 2024

ELEV 101	TDZE 101
----------	----------



CATEGORY	A	B	C	D
LPV DA *		301-½	200 (200-½)	
LNAV/VNAV DA **		503-¾	402 (500-¾)	
LNAV MDA***	540 ½	439 (500-½)	540-¾	359 (400-¾)
CIRCLING	660-1	720-1	720-1¾	720-2
	559 (600-1)	619 (700-1)	619 (700-1¾)	619 (700-2)

