

# HI-TACAN Y RWY 21L

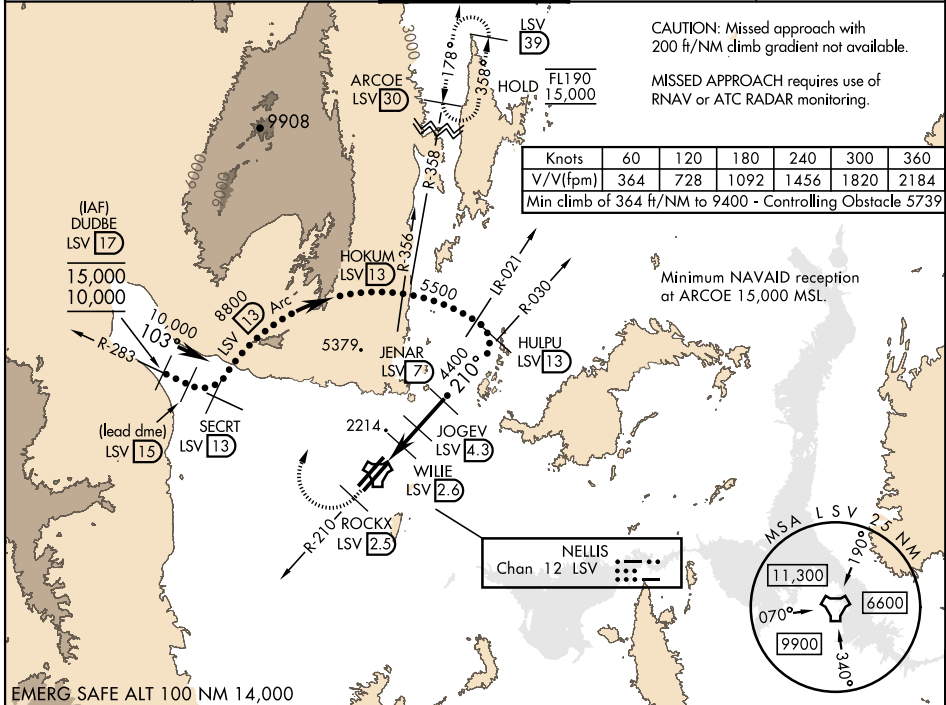
TACAN LSV Chan <b>12</b>	APCH CRS <b>210°</b>	Rwy ldg 21L <b>10,051</b> TDZE <b>1865</b> Arprt Elev <b>1869</b>	Rwy ldg 21R <b>10,120</b> TDZE <b>1869</b>	AL-227 [USAF]	NELLIS AFB (KLSV)
-----------------------------	-------------------------	---	---	---------------	-------------------

\* When ALS inop, increase CAT CDE vis to 1½ miles.  
 \*\* Circling not authorized SE of Rwy 3R-21L.

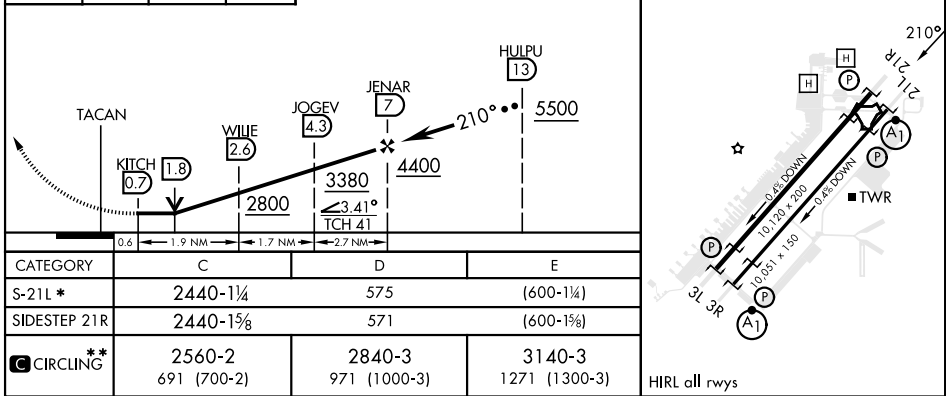
ALSF-1

MISSED APPROACH: Climb to 15,000, intercept LSV TACAN R-210 to 2.5 DME (ROCKX), then climbing right turn heading 043° to intercept LSV R-358 to ARCOE and hold, climb in hold to 15,000. Missed approach not for civil use.

ATIS <b>270.1</b>	APP CON <b>124.95 273.55</b>	TOWER <b>132.55 327.0</b>	GND CON <b>121.8 275.8</b>	CLNC DEL <b>120.9 289.4</b>
----------------------	---------------------------------	------------------------------	-------------------------------	--------------------------------



15,000 LSV R-210 ROCKX LSV 2.5 hdg 043° ARCOE R-358 30	VGS1 and descent angles not coincident (VGS1 Angle 3.00/TCH 54).	ELEV 1869	TDZE 21L 1865 TDZE 21R 1869
---	--	-----------	--------------------------------



SW-4, 11 JUL 2024 to 08 AUG 2024

SW-4, 11 JUL 2024 to 08 AUG 2024

# HI-TACAN Y RWY 21L