

MORMON MESA EIGHT DEPARTURE (MMM8 • MMM)

NELLIS AFB (KLSV)
LAS VEGAS, NEVADA

• 9485
 ATIS 270.1
 CLNC DEL
 120.9 289.4
 GND CON
 121.8 275.8
 TOWER
 132.55 327.0
 DEP CON
 135.1 350.225
 LOS ANGELES CENTER
 124.2 134.65 307.9 343.6

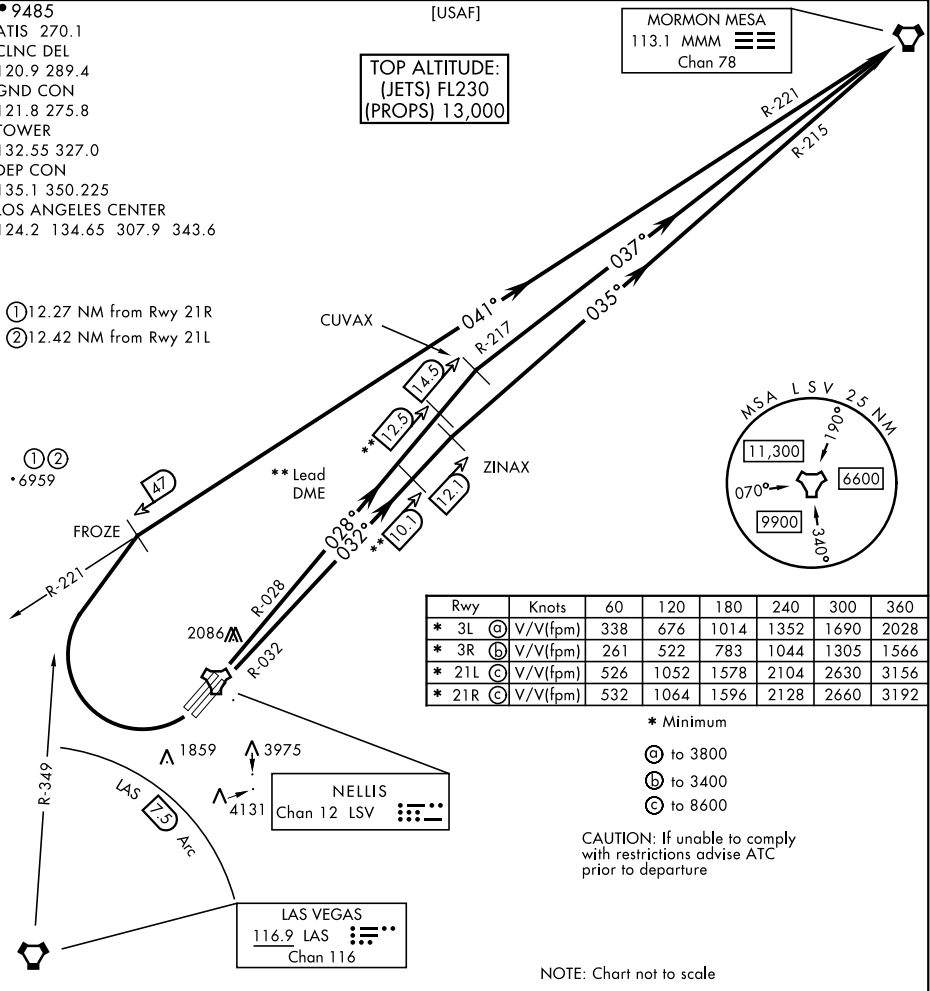
[USAF]

TOP ALTITUDE:
 (JETS) FL230
 (PROPS) 13,000

MORMON MESA
 113.1 MMM
 Chan 78

- ① 12.27 NM from Rwy 21R
- ② 12.42 NM from Rwy 21L

① ②
 • 6959



Rwy	Knots	60	120	180	240	300	360
* 3L (a)	V/V(fpm)	338	676	1014	1352	1690	2028
* 3R (b)	V/V(fpm)	261	522	783	1044	1305	1566
* 21L (c)	V/V(fpm)	526	1052	1578	2104	2630	3156
* 21R (c)	V/V(fpm)	532	1064	1596	2128	2660	3192

- * Minimum
- (a) to 3800
- (b) to 3400
- (c) to 8600

CAUTION: If unable to comply with restrictions advise ATC prior to departure

NOTE: Chart not to scale

DEPARTURE ROUTE DESCRIPTION

TAKEOFF RWY 3L: Fly runway heading to intercept LSV TACAN R-028 then direct CUVAX, intercept the MMM VORTAC R-217 then direct MMM, thence...

TAKEOFF RWY 3R: Fly runway heading to intercept LSV TACAN R-032 then direct ZINAX, intercept the MMM VORTAC R-215 then direct MMM, thence...

TAKEOFF RWY 21L/R: Turn right to intercept MMM VORTAC R-221 prior to MMM 47 DME (FROZE), remain north of the LAS VORTAC 7.5 DME, remain East of LAS R-349, intercept MMM R-221 then direct MMM, thence...

...turbojets maintain FL230 (or requested altitude if lower), props maintain 13,000 (or requested altitude if lower), then via assigned route. Expect filed altitude 10 minutes after departure.

NOISE ABATEMENT PROCEDURES: Fly IAW Nellis Noise Abatement instructions published in AP/1.

MORMON MESA EIGHT DEPARTURE (MMM8 • MMM)

LAS VEGAS, NEVADA
NELLIS AFB (KLSV)