

LAS VEGAS, NEVADA

TACAN X RWY 21L

TACAN LSV Chan 12	APCH CRS 210°
----------------------	------------------

Rwy Idg	21L	21R
TDZE	10,051	10,120
Arprt Elev	1865	1869

AL-227 (USAF)

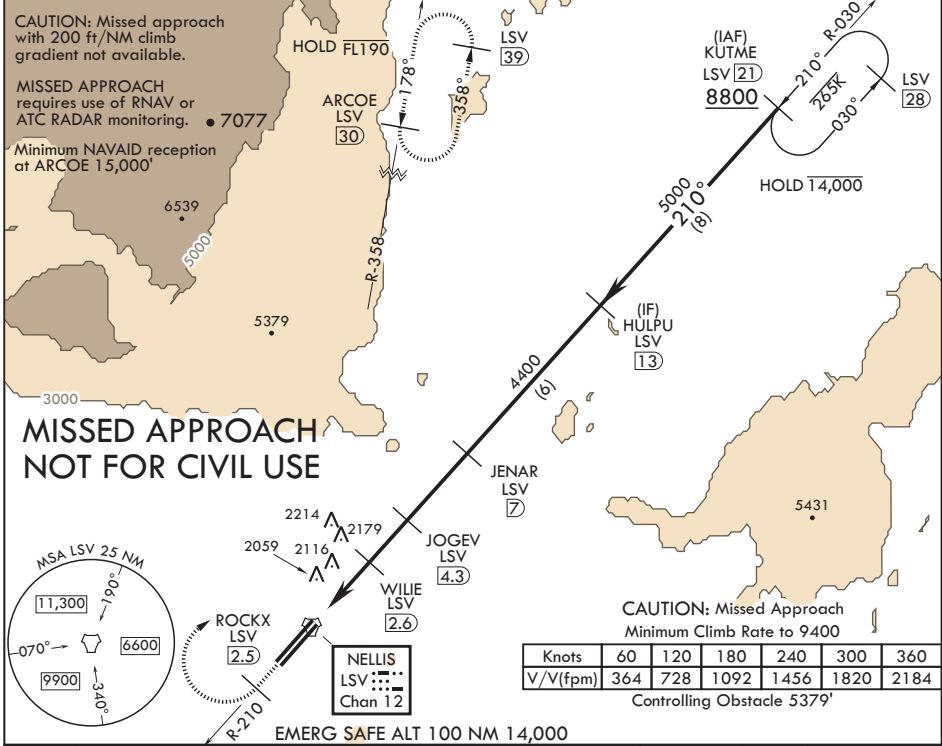
NELLIS AFB (KLSV)

⚠ * When ALS inop, increase CAT AB RVR to 55, vis to 1 mile, CAT CDE vis to 1 5/8 miles.
 ** Circling not authorized SE of Rwy 3R-21L.



MISSED APPROACH: Climb to 15,000, intercept LSV TACAN R-210 to 2.5 DME (ROCKX), then climbing right turn heading 043° to intercept LSV R-358 to ARCOE and hold, climb in hold to 15,000. Missed approach not for civil use.

ATIS 270.1	APP CON 124.95 273.55	TOWER 132.55 327.0	GND CON 121.8 275.8	CLNC DEL 120.9 289.4
---------------	--------------------------	-----------------------	------------------------	-------------------------



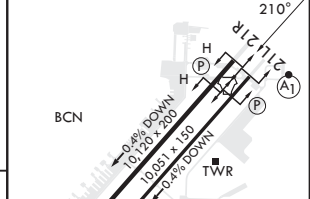
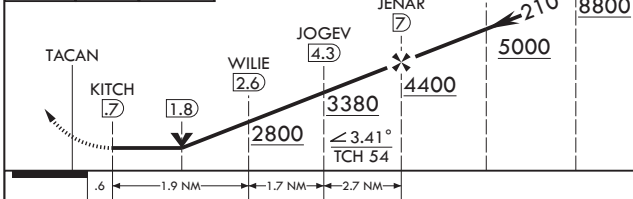
SW-4, 11 JUL 2024 to 08 AUG 2024

SW-4, 11 JUL 2024 to 08 AUG 2024

15,000 LSV	ROCKX LSV (2.5)
------------	-----------------

EMERG SAFE ALT 100 NM 14,000
 VGSI and descent angles not coincident (VGSI Angle 3.00/TCH 54).
 hdg 043°

ELEV 1869	TDZE 21L 1865	TDZE 21R 1869
-----------	---------------	---------------



CATEGORY	A	B	C	D	E
S-21L*	2440/24 575 (600-½)		2440-1¼ 575 (600-1¼)		
SIDESTEP 21R	2440-1 571 (600-1)		2440-1⅝ 571 (600-1⅝)		
CIRCLING**	2440-1 571 (600-1)	2460-1 591 (600-1)	2560-2 691 (700-2)	2840-3 971 (1000-3)	3140-3 1271 (1300-3)

HIRL all Rwys

LAS VEGAS, NEVADA
 Amdt 10 10AUG23

36°14'N - 115°02'W

NELLIS AFB (KLSV)

TACAN X RWY 21L