

FORT SILL, OKLAHOMA

# RNAV (GPS) RWY 36

HENRY POST AAF (KFSI)

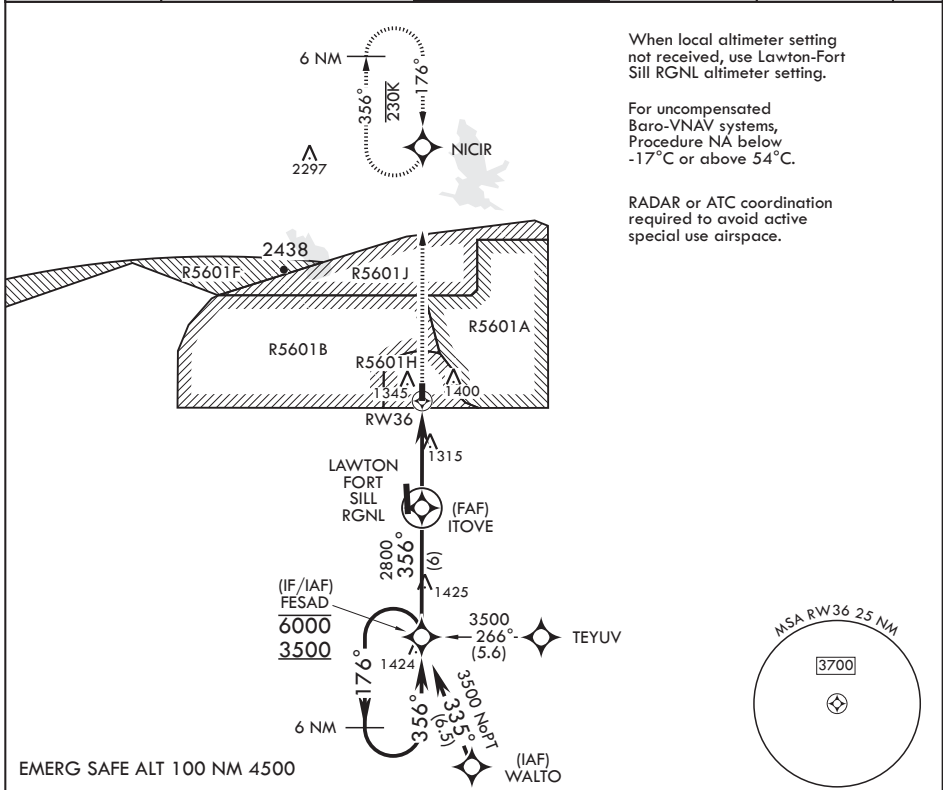
APCH CRS <b>356°</b>	Rwy Idg TDZE Arpt Elev	<b>5002</b> <b>1187</b> <b>1188</b>
-------------------------	------------------------------	---

-(USA)

**▼** \* When ALS inop, increase RVR to 45, vis to 7/8 mile.  
 \*\* When ALS inop, increase CAT AB RVR to 55, vis to 1 mile; CAT CD vis to 1 3/8 miles.

**SALS** MISSED APPROACH: Climb to 4000 direct NICIR and hold. Radar required for MA to avoid active airspace.

ATIS <b>135.425 354.025</b>	FORT SILL APP CON/DEP CON <b>120.55 322.4</b>	TOWER* <b>124.95</b> (CTAF) <b>0 229.4</b>	POST GND CON <b>121.7 279.575</b>	CLNC DEL <b>121.7 279.575</b>	ASR
--------------------------------	--	---	--------------------------------------	----------------------------------	-----

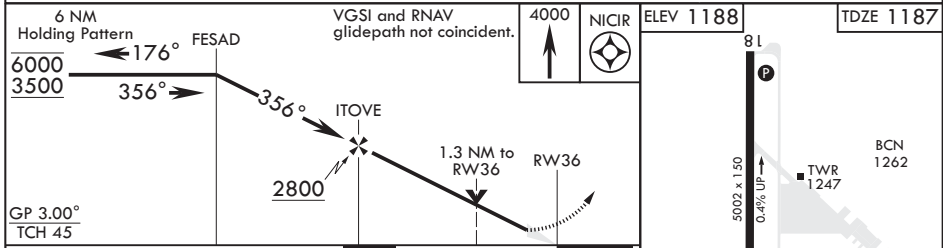


When local altimeter setting not received, use Lawton-Fort Sill RGNL altimeter setting.

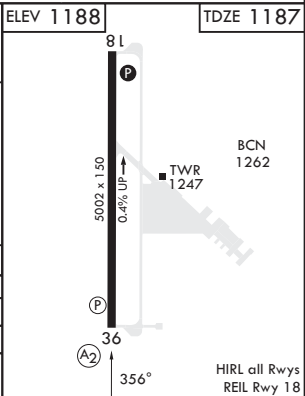
For uncompensated Baro-VNAV systems, Procedure NA below -17°C or above 54°C.

RADAR or ATC coordination required to avoid active special use airspace.

EMERG SAFE ALT 100 NM 4500



CATEGORY	A	B	C	D
LNAV/VNAV DA*	1490/40		303	(400-¾)
LNAV MDA**	1640/40	453 (500-¾)	1640/55	453 (500-1)
<b>C</b> CIRCLING	1680-1 492 (500-1)	1760-1 572 (600-1)	1820-1¼ 632 (700-1¼)	1920-2¼ 732 (800-2¼)



FORT SILL, OKLAHOMA  
Amdt 3 30NOV23

34°39'N - 98°24'W

HENRY POST AAF (KFSI)

# RNAV (GPS) RWY 36

SC-1, 11 JUL 2024 to 08 AUG 2024

SC-1, 11 JUL 2024 to 08 AUG 2024

HIRL all Rwy's  
REL Rwy 18