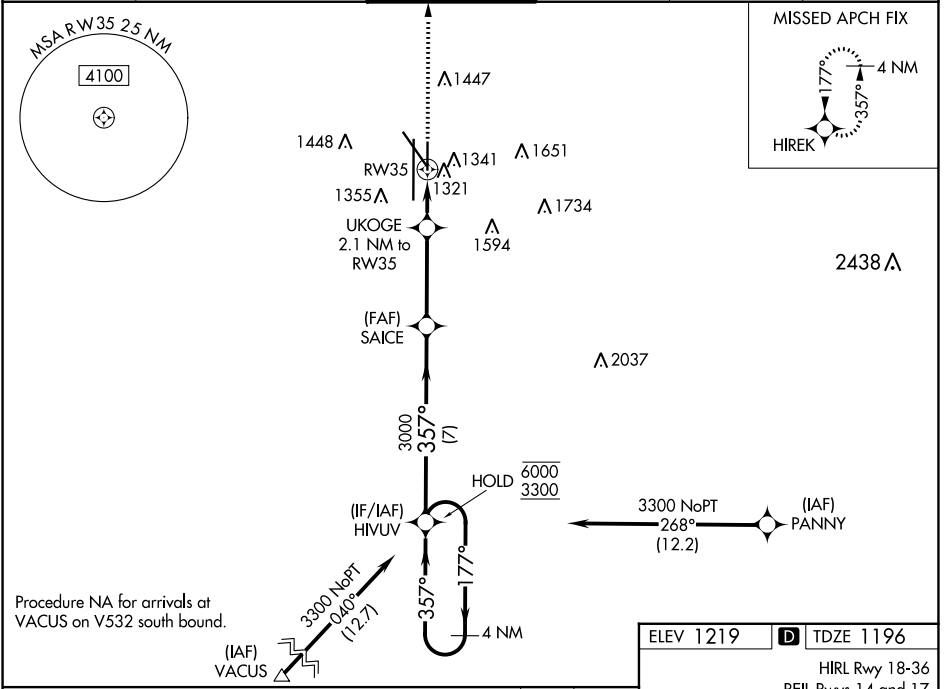


WAAS CH <b>45637</b> <b>W35A</b>	APP CRS <b>357°</b>	Rwy Idg TDZE <b>1196</b> Apt Elev <b>1219</b>	<b>5800</b>
--	------------------------	---	-------------

# RNAV (GPS) RWY 35

LINCOLN (LNK)

RNP APCH - GPS.		LINCOLN TOWER* <b>118.5 (CTAF) 253.5</b>		GND CON <b>121.9 275.8</b>	CLNC DEL <b>120.7 225.4</b>	UNICOM <b>122.95</b>
MISSED APPROACH: Climb to 3800 direct HIREK and hold.						

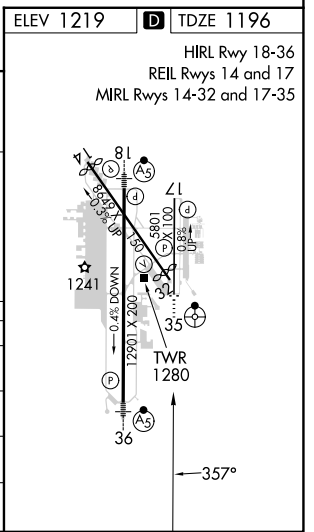


Procedure NA for arrivals at VACUS on V532 south bound.

VGSI and RNAV glidepath not coincident (VGSI Angle 3.00/TCH 30).

4 NM Holding Pattern	HIVUV	SAICE	UKOGE 2.1 NM to RW35	HIREK
6000 ← 177°	3000	3000	1.2 NM to RW35	3800
3300 → 357°				
GP 3.00°				
TCH 45				
	7 NM	3.5 NM	0.9	1.2 NM

CATEGORY	A	B	C	D
LPV DA		1446-3/4	250 (300-3/4)	
RNAV/VNAV DA		1534-1	338 (400-1)	
RNAV MDA	1580-3/4	384 (400-3/4)	1580-1	384 (400-1)
<b>C</b> CIRCLING	1680-1 461 (500-1)	1760-1 541 (600-1)	1820-1 3/4 601 (700-1 3/4)	1960-2 1/2 741 (800-2 1/2)



NC-2, 11 JUL 2024 to 08 AUG 2024

NC-2, 11 JUL 2024 to 08 AUG 2024