

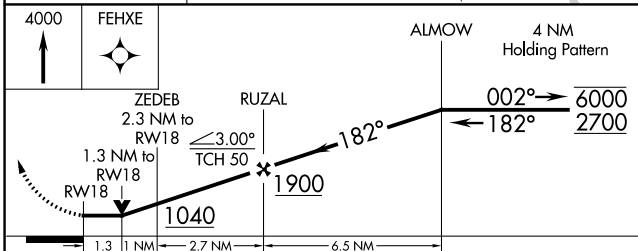
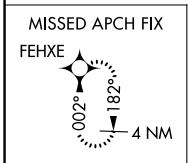
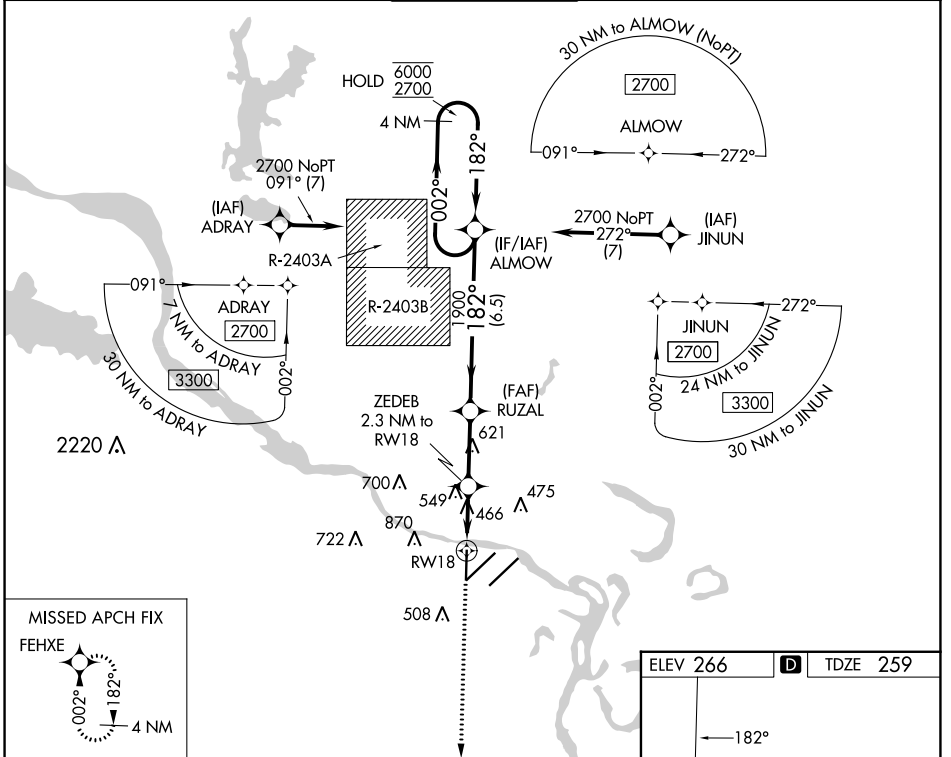
WAAS CH <b>45624</b> <b>W18A</b>	APP CRS <b>182°</b>	Rwy Idg TDZE Apt Elev	<b>6060</b> <b>259</b> <b>266</b>
--	------------------------	-----------------------------	---

# RNAV (GPS) RWY 18

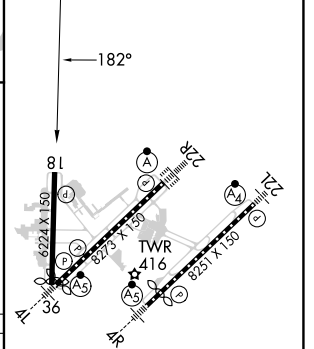
BILL AND HILLARY CLINTON NTL/ADAMS FLD (LIT)

RNP APCH - GPS.	MISSED APPROACH: Climb to 4000 direct FEHXE and hold, continue climb-in-hold to 4000.
▼ Rwy 18 helicopter visibility reduction below 3/4 SM NA. Procedure NA when restricted	
▲ areas R-2403A/B in effect.	

D-ATIS <b>125.65</b>	LITTLE ROCK APP CON <b>135.4 353.6</b>	ADAMS TOWER <b>118.7 257.8</b>	GND CON <b>121.9 339.8</b>	CLNC DEL <b>118.95</b>
-------------------------	---	-----------------------------------	-------------------------------	---------------------------



ELEV 266	<b>D</b>	TDZE 259
----------	----------	----------



CATEGORY	A	B	C	D
LP MDA	720-1	461 (500-1)	720-1 3/8	461 (500-1 3/8)
LNAV MDA	820-1	561 (600-1)	820-1 5/8	561 (600-1 5/8)
<b>C</b> CIRCLING	820-1 554 (600-1)	1000-1 734 (800-1)	1180-2 3/4 914 (1000-2 3/4)	1180-3 914 (1000-3)

MIRL Rwy 18-36  
 HIRL Rwys 4R-22L and 4L-22R  
 TDZ/CL Rwy 22R

SC-1, 11 JUL 2024 to 08 AUG 2024

SC-1, 11 JUL 2024 to 08 AUG 2024