

CHATTY FIVE DEPARTURE  
(CHATTY5.CHATY) 27APR17

TOP ALTITUDE:  
ASSIGNED BY ATC

SAN MARCUS  
114.9 RZS  
Chan 96

GAVIOTA  
113.8 GVO  
Chan 85

VENTURA  
116.55 VTU  
Chan 112(Y)

FILLMORE  
112.5 FIM  
Chan 72

GORMAN  
116.1 GMN  
Chan 108

SOCAL DEP CON  
124.3 363.2 (045°-224°)  
125.2 263.025 (225°-044°)  
D-ATIS DEP  
135.65  
CLNC DEL  
120.35 327.0  
CPDLC  
GND CON  
(N) 121.65 327.0  
(S) 121.75 327.0  
(W) 121.4 327.0  
LOS ANGELES TOWER  
(N) 133.9 239.3  
(S) 120.95 379.1

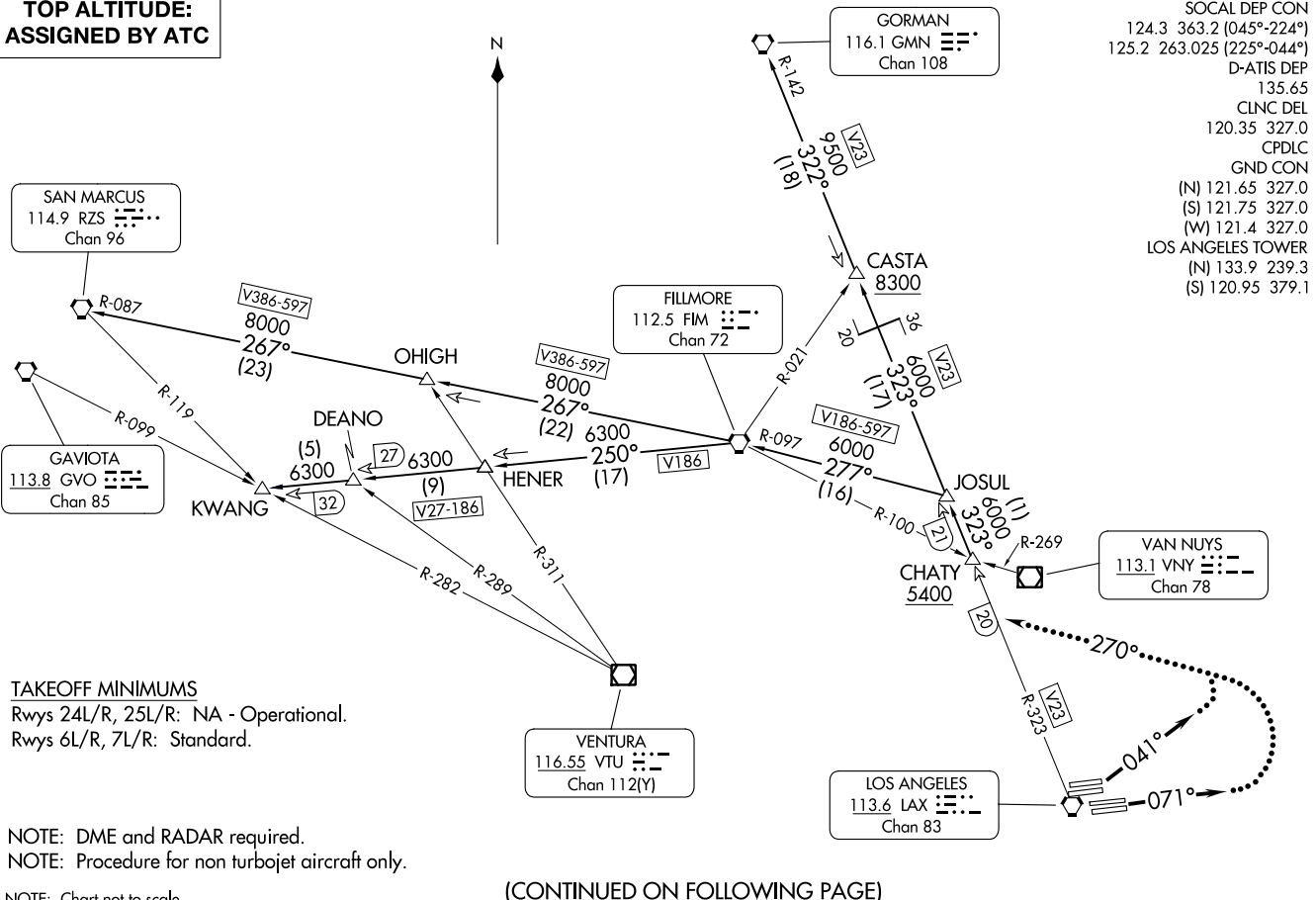
VAN NUYS  
113.1 VNY  
Chan 78

LOS ANGELES  
113.6 LAX  
Chan 83

TAKEOFF MINIMUMS  
Rwys 24L/R, 25L/R: NA - Operational.  
Rwys 6L/R, 7L/R: Standard.

NOTE: DME and RADAR required.  
NOTE: Procedure for non turbojet aircraft only.

NOTE: Chart not to scale.



(CONTINUED ON FOLLOWING PAGE)

(CHATTY5.CHATY) 23334  
CHATTY FIVE DEPARTURE

AL-237 (FAA)

LOS ANGELES INTL (LAX)  
LOS ANGELES CALIFORNIA

LOS ANGELES CALIFORNIA  
LOS ANGELES INTL (LAX)



DEPARTURE ROUTE DESCRIPTION

TAKEOFF RUNWAYS 6L/R: Climb heading 041° for vector to V23, thence. . . .

TAKEOFF RUNWAYS 7L/R: Climb heading 071° for vector to V23, thence. . . .

. . . .then on (transition) or (assigned route). Expect filed altitude 5 minutes after departure.

LOST COMMUNICATIONS

RUNWAYS 6L/R, 7L/R: If not in contact with departure control within 3 minutes after departure, turn left heading 270°, intercept V23 to CHATY INT and resume the CHATY FIVE DEPARTURE. Continue on course.

GORMAN TRANSITION (CHATY5.GMN): From over CHATY INT on LAX R-323 and GMN R-142 to GMN VORTAC.

HENER TRANSITION (CHATY5.HENER): From over CHATY INT on LAX R-323 to JOSUL, then on FIM R-097 to FIM VORTAC, then on FIM R-250 to HENER INT.

KWANG TRANSITION (CHATY5.KWANG): From over CHATY INT on LAX R-323 to JOSUL, then on FIM R-097 to FIM VORTAC, then on FIM R-250 to KWANG INT.

SAN MARCUS TRANSITION (CHATY5.RZS): From over CHATY INT on LAX R-323 to JOSUL, then on FIM R-097 to FIM VORTAC, then on FIM R-267 to OHIGH INT, then on RZS R-087 to RZS VORTAC.

SW-3, 11 JUL 2024 to 08 AUG 2024

SW-3, 11 JUL 2024 to 08 AUG 2024