

LAXX ONE DEPARTURE  
(LAXX1 .SU) 17AUG17

LOS ANGELES, CALIFORNIA  
LOS ANGELES INTL (LAX)

**TOP ALTITUDE:  
ASSIGNED BY ATC**

SANTA MONICA  
110.8 SMO :---  
Chan 45

**TAKEOFF MINIMUMS**

Rwy 6L/R, 7L/R, 24L/R, 25L/R: Standard.

NOTE: This departure is for  
turbojet aircraft only.

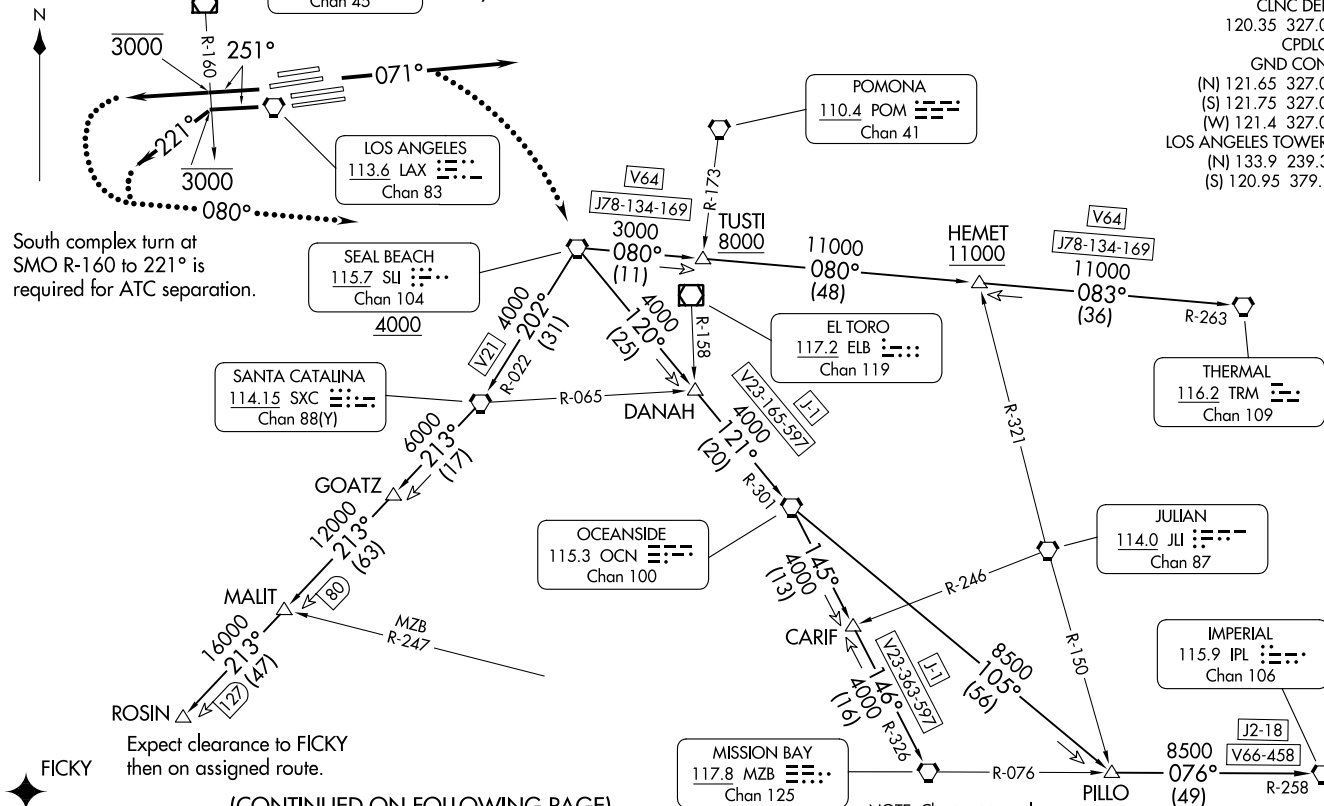
NOTE: RADAR and DME required.

SOCAL DEP CON  
124.3 363.2 (045°-224°)  
125.2 263.025 (225°-044°)  
D-ATIS DEP  
135.65  
CLNC DEL  
120.35 327.0  
CPDLC  
GND CON  
(N) 121.65 327.0  
(S) 121.75 327.0  
(W) 121.4 327.0  
LOS ANGELES TOWER  
(N) 133.9 239.3  
(S) 120.95 379.1

LAXX ONE DEPARTURE  
(LAXX1 .SU) 23334

AL-237 (FAA)

LOS ANGELES INTL (LAX)  
LOS ANGELES, CALIFORNIA



South complex turn at  
SMO R-160 to 221° is  
required for ATC separation.

Expect clearance to FICKY  
then on assigned route.

(CONTINUED ON FOLLOWING PAGE)

NOTE: Chart not to scale.



DEPARTURE ROUTE DESCRIPTION

TAKEOFF RUNWAYS 6L/R, 7L/R: Climb heading 071° for vectors to SLI VORTAC, thence. . . .

TAKEOFF RUNWAYS 24L/R: Climb on heading 251° to cross SMO R-160 at or below 3000, then on RADAR vectors to assigned route/fix/transition, thence. . . .

TAKEOFF RUNWAYS 25L/R: Climb on heading 251°, at the SMO R-160 turn left heading 221°, cross SMO R-160 at or below 3000, expect RADAR vectors to assigned route/fix/transition thence. . . .

. . . .all aircraft expect further clearance to filed flight level five minutes after departure.

IMPERIAL TRANSITION (LAXX1.IPL): From over SLI VORTAC on SLI R-120 to DANAH, then on OCN R-301 to OCN VORTAC, then on OCN R-105 to PILLO, then on MZB R-076 and IPL R-258 to IPL VORTAC.

MISSION BAY TRANSITION (LAXX1.MZB): From over SLI VORTAC on SLI R-120 to DANAH, then on OCN R-301 to OCN VORTAC, then on OCN R-145 to CARIF, then on MZB R-326 to MZB VORTAC.

OCEANSIDE TRANSITION (LAXX1.OCN): From over SLI VORTAC on SLI R-120 to DANAH, then on OCN R-301 to OCN VORTAC.

ROSIN TRANSITION (LAXX1.ROSIN): From over SLI VORTAC on SLI R-202 and SXC R-022 to SXC VORTAC, then on SXC R-213 to ROSIN.

THERMAL TRANSITION (LAXX1.TRM): From over SLI VORTAC on SLI R-080 to TUSTI, then on SLI R-080 and TRM R-263 to HEMET, then on TRM R-263 to TRM VORTAC.

LOST COMMUNICATIONS

RUNWAYS 6L/R, 7L/R: If not in contact with Departure Control within five minutes after departure, climb to FL230 or filed altitude whichever is lower, turn right direct SLI VORTAC and proceed on assigned route. Aircraft filed FL240 or above, maintain FL230 for five minutes then continue climb to filed altitude.

RUNWAYS 24L/R, 25L/R: If not in contact with Departure Control within five minutes after departure, turn left heading 080°, climb to FL230 or filed altitude whichever is lower, and when able proceed direct filed or assigned route. Aircraft filed FL240 or above, maintain FL230 for five minutes then continue climb to filed altitude.

SW-3, 11 JUL 2024 to 08 AUG 2024

SW-3, 11 JUL 2024 to 08 AUG 2024