

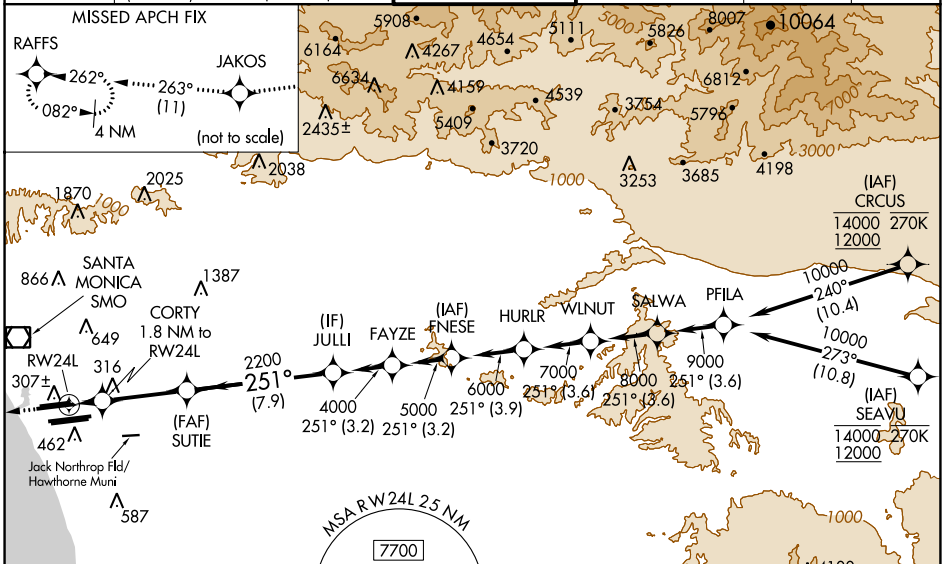
WAAS CH 56407 W24B	APP CRS 251°	Rwy Idg TDZE Apt Elev	9483 123 128
--	------------------------	-----------------------------	---

RNAV (GPS) Y RWY 24L

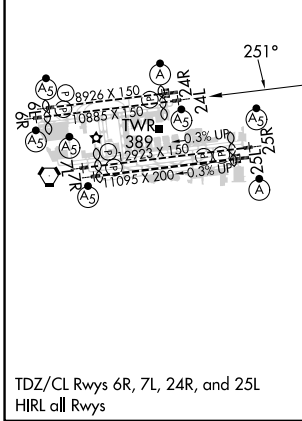
LOS ANGELES INTL (LAX)

RNP APCH.	<p>Simultaneous approach authorized. LNAV procedure NA during simultaneous operations. Use of FD or AP providing RNAV track guidance required during simultaneous operations. Simultaneous approach authorized with HHR. For uncompensated Baro-VNAV systems, LNAV/VNAV NA below 5°C or above 54°C. For inop ALS, increase LNAV/VNAV all Cats visibility to 1½ SM. #RVR 1800 authorized with use of FD or AP or HUD to DA.</p>	MALSR	<p>MISSED APPROACH: Climb to 2000 direct JAKOS and on track 263° to RAFFS and hold.</p>
-----------	--	-------	---

D-ATIS ARR 133.8 DEP 135.65	SOCAL APP CON 124.3 363.2 (APCH FM WEST) 124.9 269.0 (090°-224°) 124.5 235.975 (225°-044°) 128.5 360.7 (045°-089°)	LOS ANGELES TOWER N 133.9 239.3 S 120.95 379.1	GND CON N 121.65 327.0 S 121.75 327.0 W 121.4 327.0	CLNC DEL 120.35 327.0	CPDLC
---	--	--	---	---	-------



ELEV 128	D	TDZE 123
----------	----------	----------



2000	JAKOS	tr 263°	RAFFS	VGSI and RNAV glidepath not coincident (VGSI Angle 3.00/TCH 79).
*LNAV only				JULLI 4000
CORTY 1.8 NM to RWY 24L				SUTIE 2200
RWY 24L 740*				2200
1.8 NM				4.6 NM
				7.9 NM
				GP 3.00° TCH 59

CATEGORY	A	B	C	D
LPV DA#		323/24	200 (200-½)	
LNAV/VNAV DA		608/50	485 (500-1)	
LNAV MDA	660/24	537 (600-½)	660/55	537 (600-1)

SW-3, 11 JUL 2024 to 08 AUG 2024

SW-3, 11 JUL 2024 to 08 AUG 2024