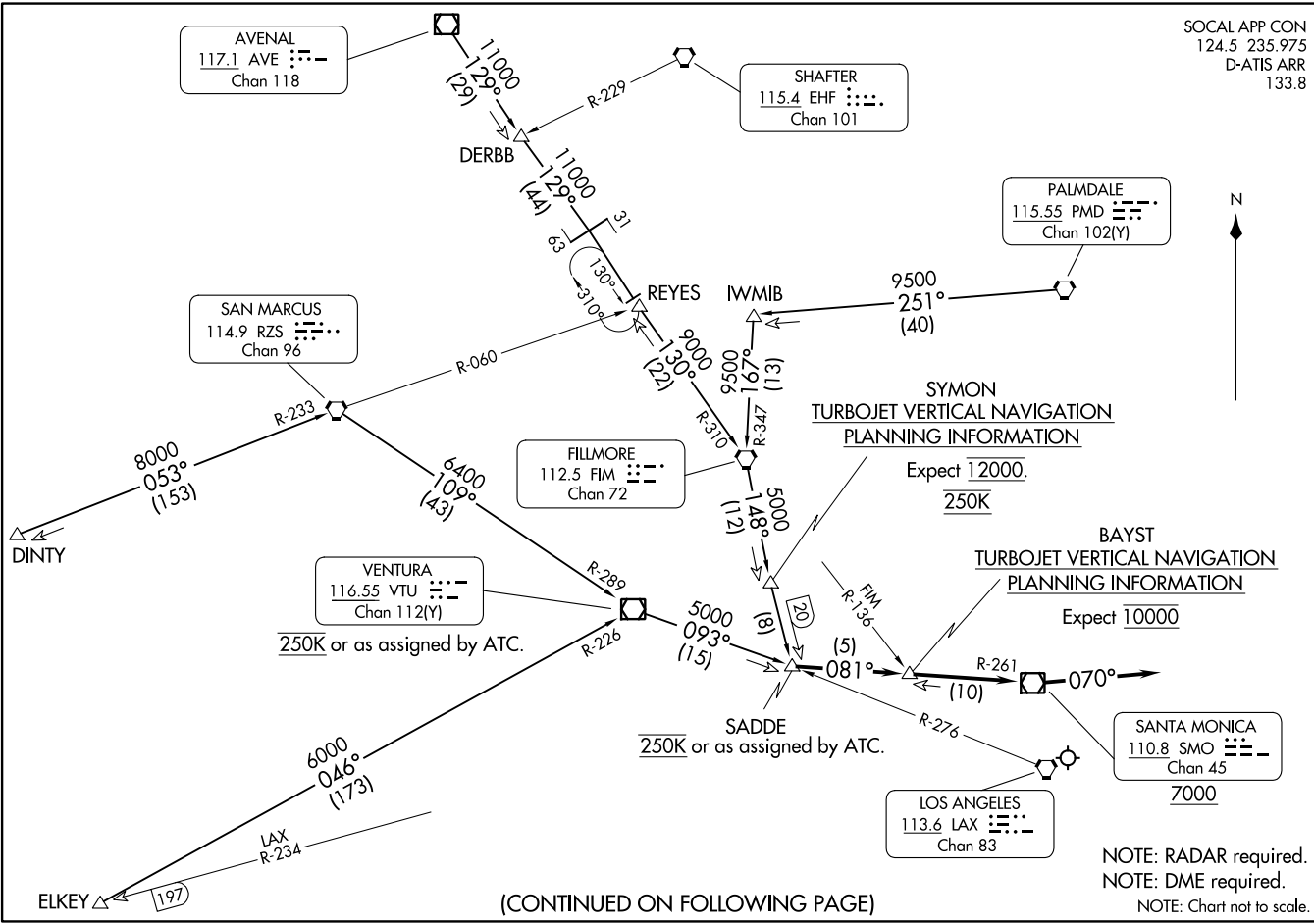


(SADDE: SADDE8) 23334
SADDE EIGHT ARRIVAL

AL-237 (FAA)

LOS ANGELES INTL (LAX)
LOS ANGELES, CALIFORNIA

SOCAL APP CON
124.5 235.975
D-ATIS ARR
133.8



SADDE EIGHT ARRIVAL
(SADDE: SADDE8) 07DEC17

LOS ANGELES, CALIFORNIA
LOS ANGELES INTL (LAX)

SW-3, 11 JUL 2024 to 08 AUG 2024

SW-3, 11 JUL 2024 to 08 AUG 2024

(CONTINUED ON FOLLOWING PAGE)

NOTE: RADAR required.
NOTE: DME required.
NOTE: Chart not to scale.

ARRIVAL ROUTE DESCRIPTION

AVENAL TRANSITION (AVE.SADDE8): From over AVE VOR/DME on AVE R-129 and FIM R-310 to FIM VORTAC, then on FIM R-148 to SADDE. Thence. . . .

DERBB TRANSITION (DERBB.SADDE8): From over DERBB on AVE R-129 and FIM R-310 to FIM VORTAC, then on FIM R-148 to SADDE. Thence. . . .

DINTY TRANSITION (DINTY.SADDE8): From over DINTY on RZS R-233 to RZS VORTAC, then on RZS R-109 and VTU R-289 to VTU VOR/DME, then on VTU R-093 to SADDE. Thence. . . .

ELKEY TRANSITION (ELKEY.SADDE8): From over ELKEY on VTU R-226 to VTU VOR/DME then on VTU R-093 to SADDE. Thence. . . .

FILLMORE TRANSITION (FIM.SADDE8): From over FIM VORTAC on FIM R-148 to SADDE. Thence. . . .

PALMDALE TRANSITION (PMD.SADDE8): From over PMD VORTAC on PMD R-251 and FIM R-347 to FIM VORTAC, then on FIM R-148 to SADDE. Thence. . . .

SAN MARCUS TRANSITION (RZS.SADDE8): From over RZS VORTAC on RZS R-109 and VTU R-289 to VTU VOR/DME, then on VTU R-093 to SADDE. Thence. . . .

VENTURA TRANSITION (VTU.SADDE8): From over VTU VOR/DME on VTU R-093 to SADDE. Thence. . . .

. . . From SADDE on SMO VOR/DME R-261 to cross SMO VOR/DME at or above 7000. Then on heading 070°. Expect RADAR vectors to final approach course.

LOST COMMUNICATIONS

In the event of lost communications proceed on the ILS or LOC RWY 24R.

SW-3, 11 JUL 2024 to 08 AUG 2024

SW-3, 11 JUL 2024 to 08 AUG 2024