

VISTA THREE ARRIVAL

SW-3, 11 JUL 2024 to 08 AUG 2024

ARRIVAL ROUTE DESCRIPTION

JULIAN TRANSITION (JLI.VISTA3): From over JLI VORTAC on JLI R-263 and OCN R-083 to VISTA. Thence, . . .

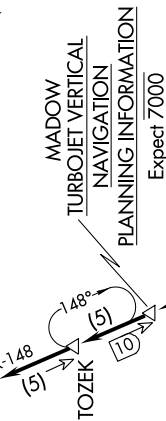
. . . from VISTA to CYNDE on OCN R-083. From CYNDE to OCN VORTAC on OCN R-083. From OCN VORTAC to SHIVE on OCN R-259 and SLI R-148. From SHIVE to CWARD on SLI R-148. From CWARD to BAYER on SLI R-148. From BAYER to MADOW on SLI R-148. From MADOW to TOZEK on SLI R-148. From TOZEK to SLI VORTAC on SLI R-148. Expect RADAR vectors to final approach course for Runways 24 or 25.



SOCAL APP CON
128.1 281.4
D-ATIS ARR
133.8



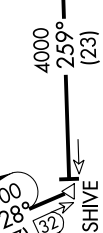
SEAL BEACH
115.7 SLI
Chan 104



TOZEK
(5)
(10)



CWARD
(5)
(25)



SHIVE
(23)



OCEANSIDE
(5)



VISTA
(4)
(9)



JULIAN
(33)

MISSION BAY
(33)

OCN VORTAC
(33)

NOTE: DME and RADAR required.
NOTE: Chart not to scale.

VISTA THREE ARRIVAL

SW-3, 11 JUL 2024 to 08 AUG 2024