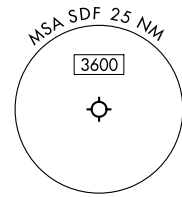


LOUISVILLE DEP CON  
 132.075 327.0  
 D-ATIS 118.725  
 CLNC DEL  
 126.1 275.8  
 CPDLC  
 GND CON  
 121.7 348.6  
 LOUISVILLE TOWER  
 124.2 257.8

RNAV 1 - DME/DME/IRU or GPS.

RADAR required for non-GPS equipped aircraft.

TOP ALTITUDE:  
13000



TAKEOFF MINIMUMS:  
 Rwy 17L/R, 29, 35L/R: Standard with  
 minimum climb of 500'/NM to 1020.

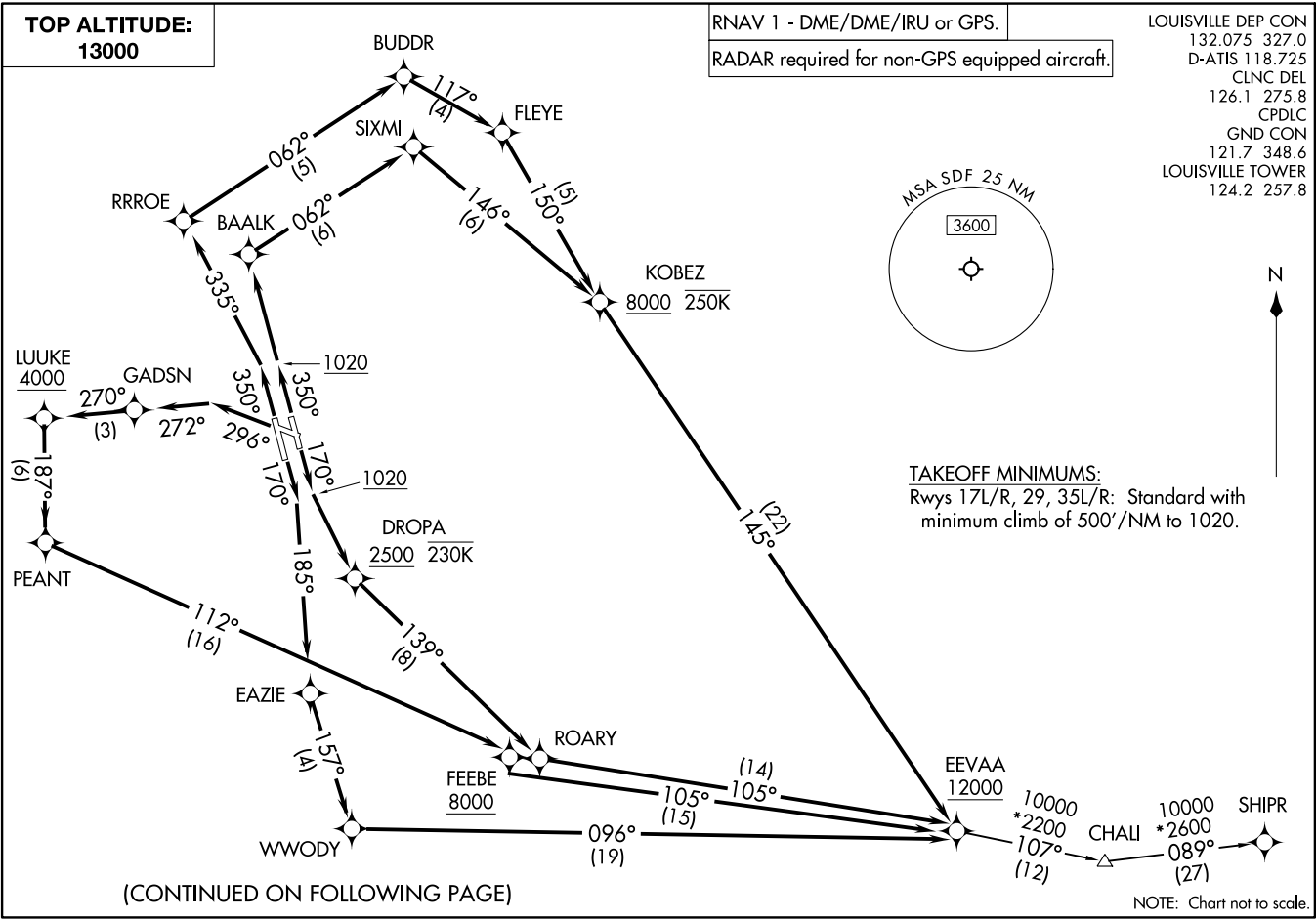


EEVAA ONE DEPARTURE (RNAV)  
 (EEVAA1.EEVAA) 11JUL24

LOUISVILLE, KENTUCKY  
 LOUISVILLE MUHAMMAD ALI INTL (SDF)

(EEVAA1.EEVAA) 24193  
 EEVAA ONE DEPARTURE (RNAV)

LOUISVILLE MUHAMMAD ALI INTL (SDF)  
 LOUISVILLE, KENTUCKY



(CONTINUED ON FOLLOWING PAGE)

NOTE: Chart not to scale.

# EEVAA ONE DEPARTURE (RNAV)



## DEPARTURE ROUTE DESCRIPTION

TAKEOFF RUNWAY 17L: Climb on heading 170° to 1020, then direct to cross DROPA at or above 2500 and at or below 230K, then on track 139° to ROARY, then on track 105° to cross EEVAA at or above 12000, thence ...

TAKEOFF RUNWAY 17R: Climb on heading 170° to intercept course 185° to EAZIE, then on track 157° to WWODY, then on track 096° to cross EEVAA at or above 12000, thence ...

TAKEOFF RUNWAY 29: Climb on heading 296° to intercept course 272° to GADSN, then on track 270° to cross LUUKE at or above 4000, then on track 187° to PEANT, then on track 112° to cross FEEBE at or above 8000, then on track 105° to cross EEVAA at or above 12000, thence ...

TAKEOFF RUNWAY 35L: Climb on heading 350° to intercept course 335° to RRROE, then on track 062° to BUDDR, then on track 117° to FLEYE, then on track 150° to cross KOBZ at or above 8000 and at or below 250K, then on track 145° to cross EEVAA at or above 12000, thence ...

TAKEOFF RUNWAY 35R: Climb on heading 350° to 1020, then direct BAALK, then on track 062° to SIXMI, then on track 146° to cross KOBZ at or above 8000 and at or below 250K, then on track 145° to cross EEVAA at or above 12000, thence ...

... then on transition, maintain 13000. Expect filed altitude 10 minutes after departure.

SHIPR TRANSITION (EEVAA1.SHIPR)

SE-1, 11 JUL 2024 to 08 AUG 2024

SE-1, 11 JUL 2024 to 08 AUG 2024