

LOC/DME I-JJM <b>110.55</b> Chan 42 (Y)	APP CRS <b>350°</b>	Rwy Idg <b>7800</b> TDZE <b>479</b> Apt Elev <b>501</b>
---	------------------------	--

# ILS RWY 35R (CAT II & III)

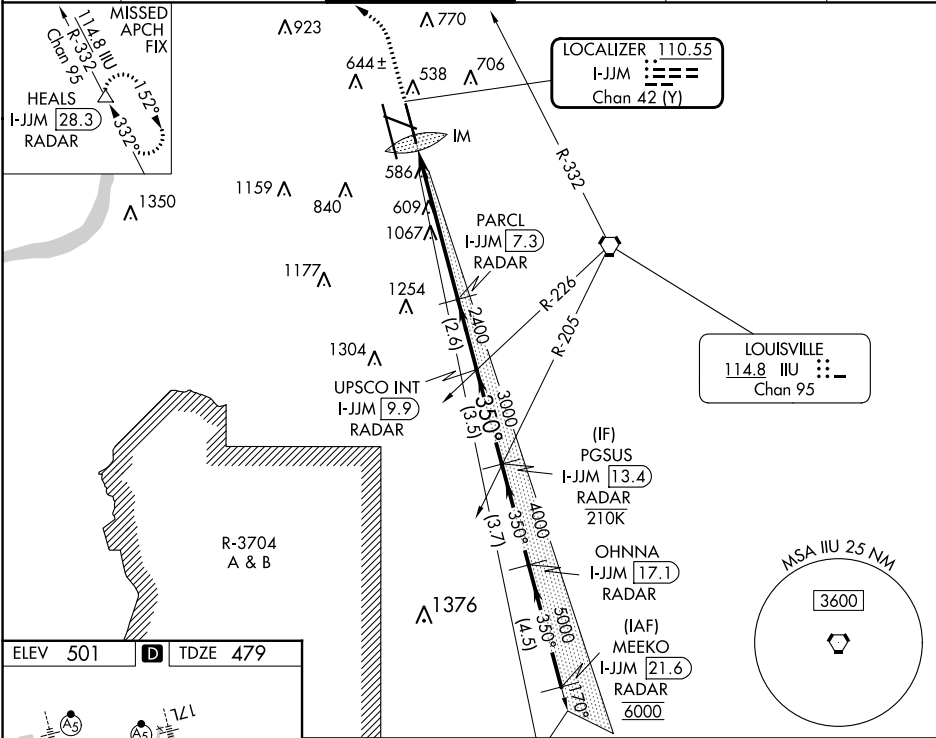
LOUISVILLE MUHAMMAD ALI INTL (SDF)

Simultaneous approach authorized. Cat II: RVR 1000 authorized with specific OPSPEC, MSPEC, or LOA approval and use of autoland or HUD to touchdown.

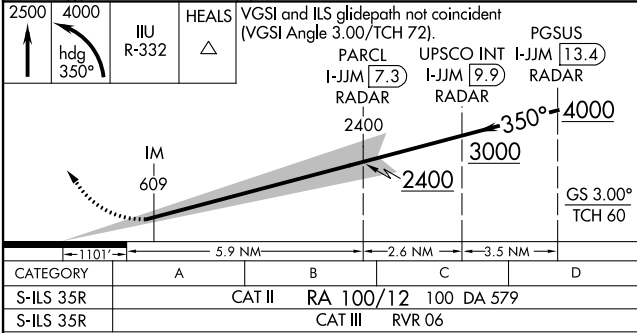
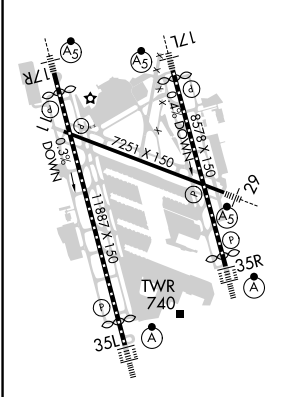


MISSED APPROACH: Climb to 2500 then climbing left turn to 4000 on heading 350° and on IJU VORTAC R-332 to HEALS/28.3 DME/RADAR and hold.

D-ATIS <b>118.725</b>	LOUISVILLE APP CON <b>132.075 327.0</b>	LOUISVILLE TOWER <b>124.2 257.8</b>	GND CON <b>121.7 348.6</b>	CLNC DEL <b>126.1 275.8</b>	CPDLC
--------------------------	--	--	-------------------------------	--------------------------------	-------



ELEV 501	<b>D</b>	TDZE 479
----------	----------	----------



CATEGORY	A	B	C	D
S-ILS 35R	CAT II RA 100/12 100 DA 579			
S-ILS 35R	CAT III RVR 06			

**CATEGORY II & III ILS - SPECIAL AIRCREW & AIRCRAFT CERTIFICATION REQUIRED**

SE-1, 11 JUL 2024 to 08 AUG 2024

SE-1, 11 JUL 2024 to 08 AUG 2024