

LOC/DME I-SNU 110.3 Chan 40	APP CRS 170°	Rwy Idg 10000 TDZE 485 Apt Elev 501
---	------------------------	--

ILS or LOC RWY 17R

LOUISVILLE MUHAMMAD ALI INTL (SDF)

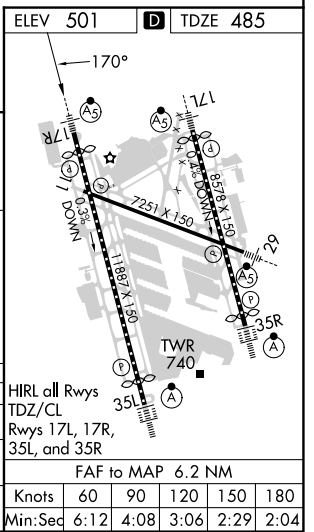
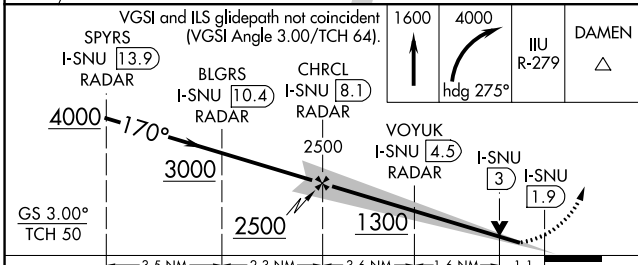
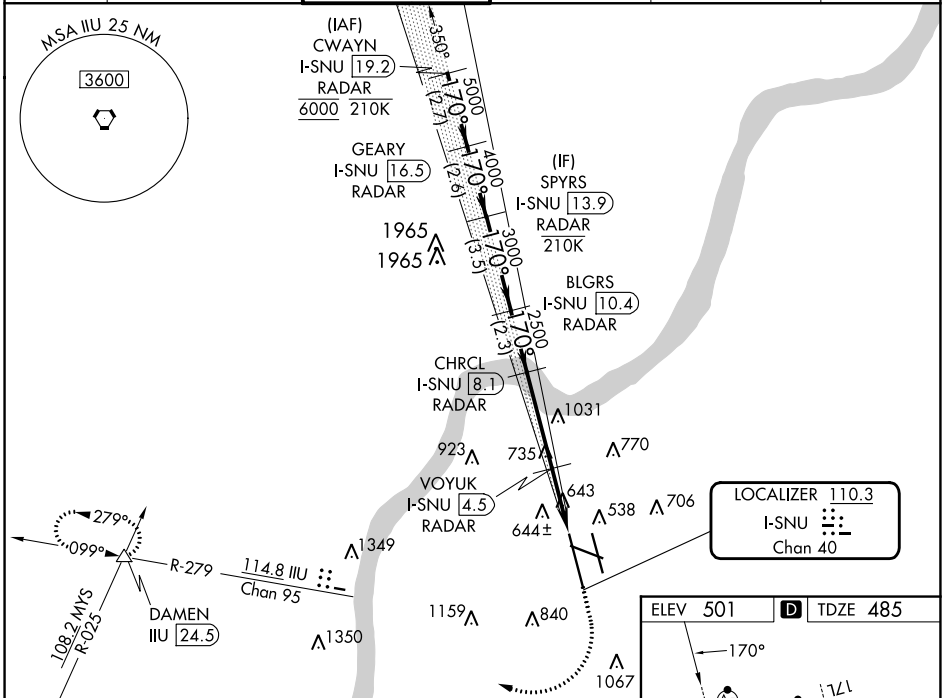
RADAR required for procedure entry at CWAYN.
DME or RADAR required.

▼ Simultaneous approach authorized. Circling Rwy 11 NA at night.
▲ For inop ALS, increase S-LOC 17R Cat C/D visibility to RVR 6000.

MALSRL
AS

MISSED APPROACH: Climb to 1600 then climbing right turn to 4000 on heading 275° and on IILU VORTAC R-279 to DAMEN INT/24.5 DME and hold.

D-ATIS 118.725	LOUISVILLE APP CON 132.075 327.0	LOUISVILLE TOWER 124.2 257.8	GND CON 121.7 348.6	CLNC DEL 126.1 275.8	CPDLC
--------------------------	--	--	-------------------------------	--------------------------------	-------



CATEGORY	A	B	C	D
S-ILS 17R		685/18	200 (200-½)	
S-LOC 17R	900/24	415 (400-½)	900/40	415 (400-¾)
CIRCLING	1040-1 539 (600-1)	1140-1 639 (700-1)	1160-1¾ 659 (700-1¾)	1400-3 899 (900-3)

SE-1, 11 JUL 2024 to 08 AUG 2024

SE-1, 11 JUL 2024 to 08 AUG 2024