

LOC/DME I-MHT 109.1 Chan 28	APP CRS 352°	Rwy Idg 7650 TDZE 265 Apt Elev 266
--	------------------------	---

ILS or LOC RWY 35

MANCHESTER BOSTON RGNL (MHT)

From SHOWZ: RNAV 1-DME/DME/IRU or GPS required.
DME or RADAR required.

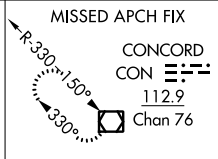
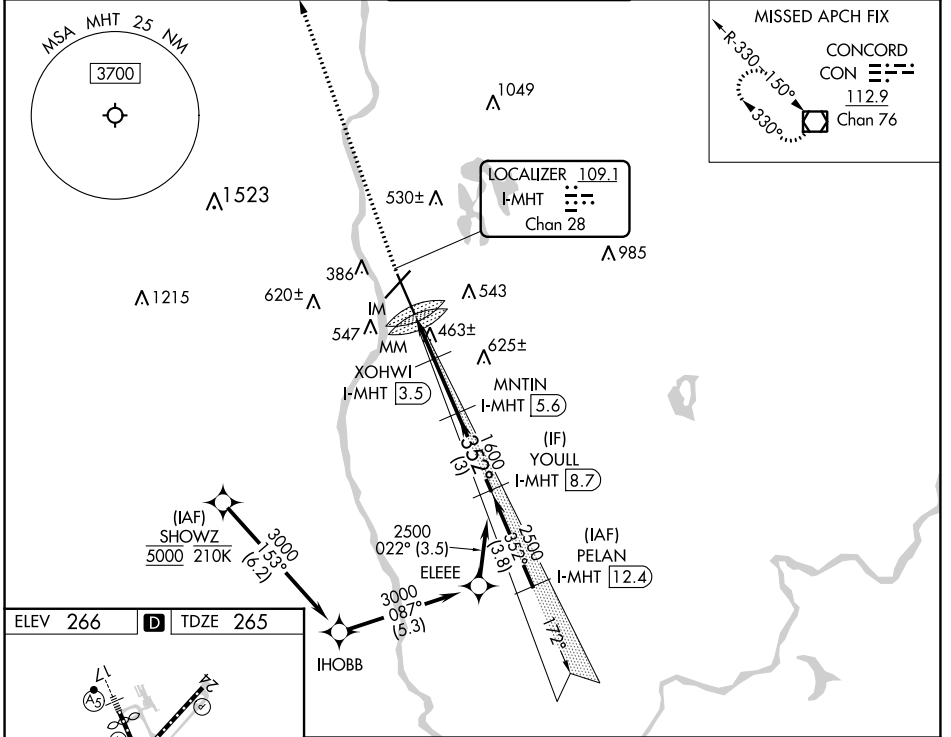
▼ Rwy 35 helicopter visibility reduction below RVR 4000 NA.
▲ For inop ALS, increase S-LOC 35 Cats A/B visibility to RVR 5500.

ALSIF-2



MISSED APPROACH: Climb to 4000 direct CON VOR/DME and hold.

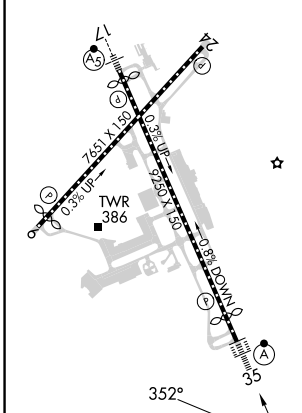
ATIS 119.55	BOSTON APP CON 124.9 269.075	MANCHESTER TOWER 121.3 239.025	GND CON 121.9	CLNC DEL 135.9
-----------------------	--	--	-------------------------	--------------------------



NE-1, 11 JUL 2024 to 08 AUG 2024

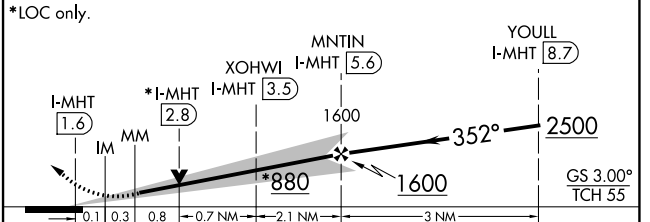
NE-1, 11 JUL 2024 to 08 AUG 2024

ELEV 266	D	TDZE 265
----------	----------	----------



REIL Rws 6 and 24
TDZ/CL Rwy 17 and 35
HIRL Rws 6-24 and 17-35

4000 CON VGS1 and ILS glidepath not coincident (VGS1 Angle 3.00/TCH 68).
Use I-MHT DME when on the localizer course.



CATEGORY	A	B	C	D
S-ILS 35	465/18 200 (200-½)			
S-LOC 35	720/40	455 (500-¾)	720/45	455 (500-¾)