

# PPORT FOUR DEPARTURE (RNAV)

ATIS 119.55  
CLNC DEL  
135.9  
GND CON  
121.9  
MANCHESTER TOWER  
121.3 239.025  
BOSTON DEP CON  
124.9 269.075

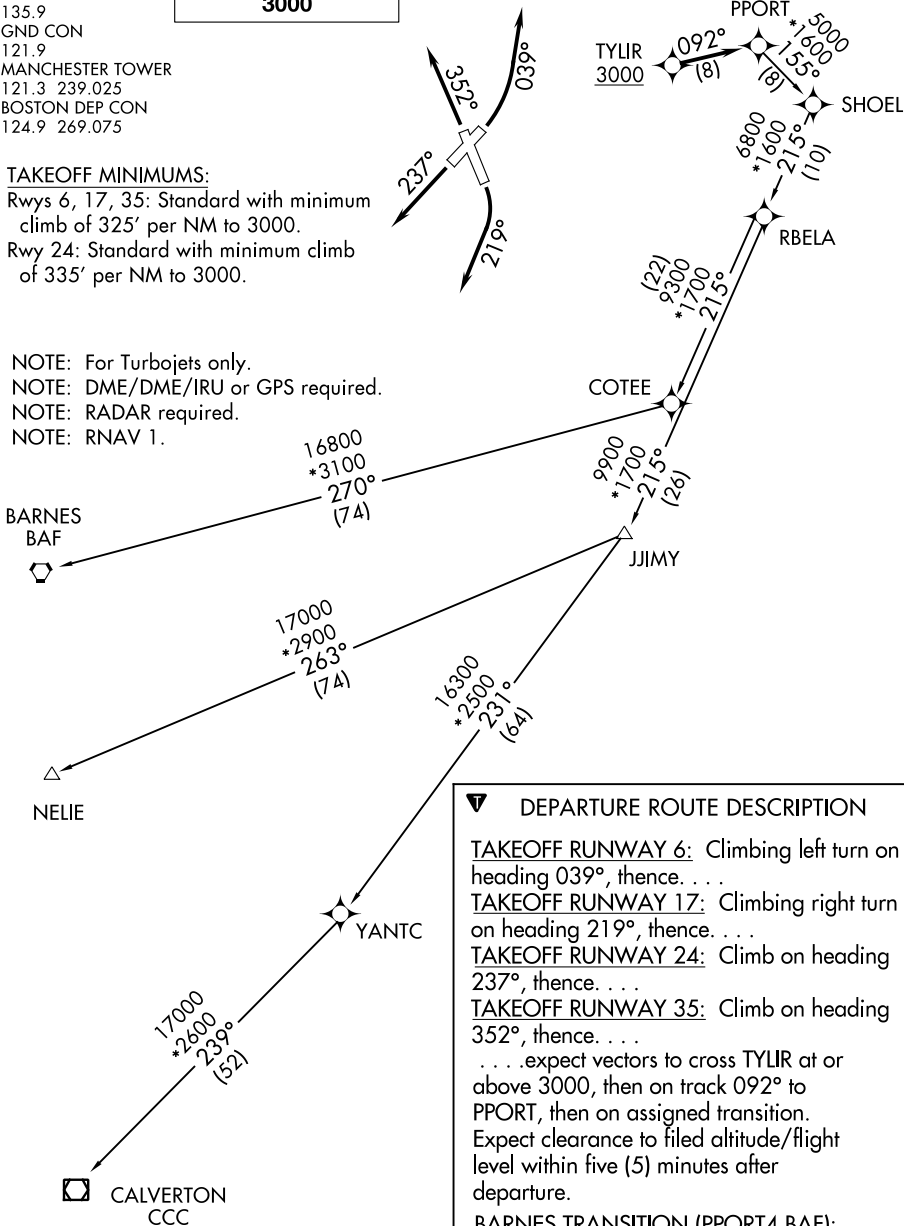
**TOP ALTITUDE:  
3000**

**TAKEOFF MINIMUMS:**

Rwys 6, 17, 35: Standard with minimum climb of 325' per NM to 3000.

Rwy 24: Standard with minimum climb of 335' per NM to 3000.

- NOTE: For Turbojets only.
- NOTE: DME/DME/IRU or GPS required.
- NOTE: RADAR required.
- NOTE: RNAV 1.



### DEPARTURE ROUTE DESCRIPTION

**TAKEOFF RUNWAY 6:** Climbing left turn on heading 039°, thence. . . .

**TAKEOFF RUNWAY 17:** Climbing right turn on heading 219°, thence. . . .

**TAKEOFF RUNWAY 24:** Climb on heading 237°, thence. . . .

**TAKEOFF RUNWAY 35:** Climb on heading 352°, thence. . . .

. . . .expect vectors to cross TYLIR at or above 3000, then on track 092° to PPORT, then on assigned transition. Expect clearance to filed altitude/flight level within five (5) minutes after departure.

**BARNES TRANSITION (PPORT4.BAF):**

**CALVERTON TRANSITION (PPORT4.CCC):**

**NELIE TRANSITION (PPORT4.NELIE):**

NOTE: Chart not to scale.

NE-1, 11 JUL 2024 to 08 AUG 2024

NE-1, 11 JUL 2024 to 08 AUG 2024