

GMBUD SEVEN DEPARTURE (RNAV)
(GMBUD7.GMBUD) 31 DEC 20

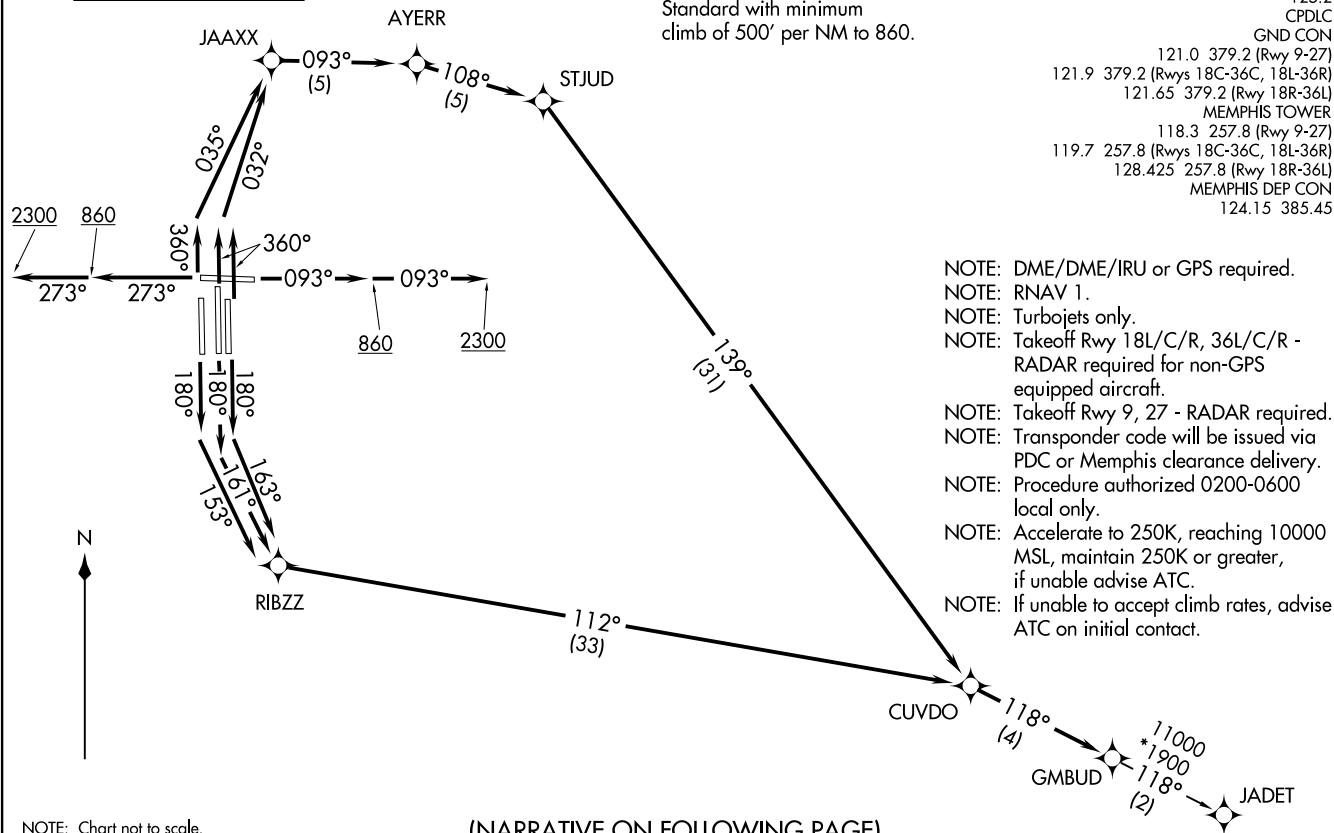
MEMPHIS, TENNESSEE
MEMPHIS INTL (MEM.M)

**TOP ALTITUDE:
5000**

TAKEOFF MINIMUMS:
Rwy 9, 18L/C/R, 27, 36L/C/R:
Standard with minimum
climb of 500' per NM to 860.

D-ATIS	127.75
CNCL DEL	125.2
CPDLC	GND CON
121.0	379.2 (Rwy 9-27)
121.9	379.2 (Rwys 18C-36C, 18L-36R)
121.65	379.2 (Rwy 18R-36L)
MEMPHIS TOWER	
118.3	257.8 (Rwy 9-27)
119.7	257.8 (Rwys 18C-36C, 18L-36R)
128.425	257.8 (Rwy 18R-36L)
MEMPHIS DEP CON	
124.15	385.45

- NOTE: DME/DME/IRU or GPS required.
- NOTE: RNAV 1.
- NOTE: Turbojets only.
- NOTE: Takeoff Rwy 18L/C/R, 36L/C/R - RADAR required for non-GPS equipped aircraft.
- NOTE: Takeoff Rwy 9, 27 - RADAR required.
- NOTE: Transponder code will be issued via PDC or Memphis clearance delivery.
- NOTE: Procedure authorized 0200-0600 local only.
- NOTE: Accelerate to 250K, reaching 10000 MSL, maintain 250K or greater, if unable advise ATC.
- NOTE: If unable to accept climb rates, advise ATC on initial contact.



NOTE: Chart not to scale.

(NARRATIVE ON FOLLOWING PAGE)

(GMBUD7.GMBUD) 20366
GMBUD SEVEN DEPARTURE (RNAV)

MEMPHIS INTL (MEM.M)
MEMPHIS, TENNESSEE

AI-253 (FAA)



DEPARTURE ROUTE DESCRIPTION

TAKEOFF RUNWAY 9: Climb on heading 093° to 860, then continue climb to 2300 on heading 093° or as assigned by ATC, for RADAR vectors to CUVDO, then on depicted route to GMBUD, thence....

TAKEOFF RUNWAY 18C: Climb on heading 180° to intercept course 161° to RIBZZ, then on depicted route to GMBUD, thence....

TAKEOFF RUNWAY 18L: Climb on heading 180° to intercept course 163° to RIBZZ, then on depicted route to GMBUD, thence....

TAKEOFF RUNWAY 18R: Climb on heading 180° to intercept course 153° to RIBZZ, then on depicted route to GMBUD, thence....

TAKEOFF RUNWAY 27: Climb on heading 273° to 860, then continue climb to 2300 on heading 273° or as assigned by ATC, for RADAR vectors to cross CUVDO, then on depicted route to GMBUD, thence....

TAKEOFF RUNWAY 36L: Climb on heading 360° to intercept course 035° to JAAXX, then on depicted route to GMBUD, thence....

TAKEOFF RUNWAYS 36C/R: Climb on heading 360° to intercept course 032° to JAAXX, then on depicted route to GMBUD, thence....

....maintain 5000. Expect clearance to filed altitude within ten (10) minutes after departure.

JADET TRANSITION (GMBUD7.JADET):

SE-1, 11 JUL 2024 to 08 AUG 2024

SE-1, 11 JUL 2024 to 08 AUG 2024