

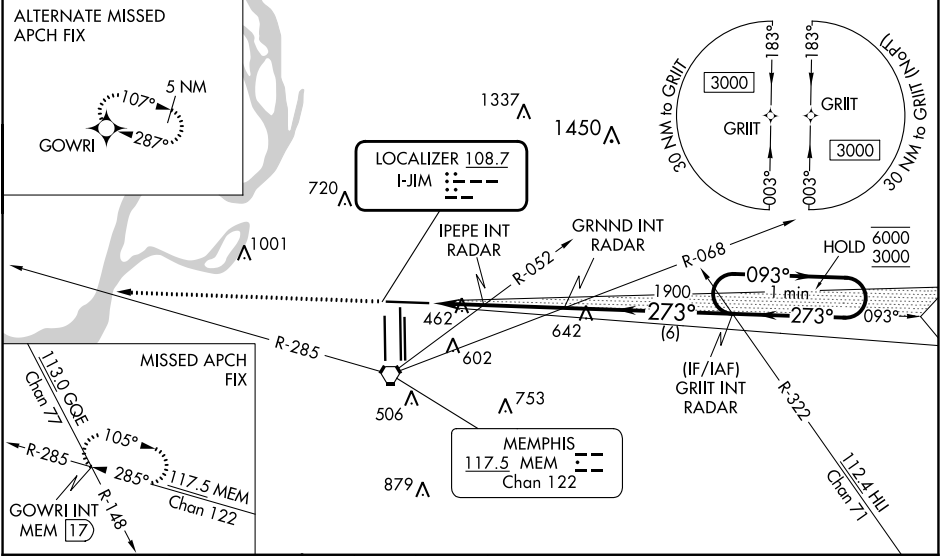
LOC I-JIM 108.7	APP CRS 273°	Rwy Idg TDZE Apt Elev	8946 292 341
---------------------------	------------------------	-----------------------------	---

ILS or LOC RWY 27

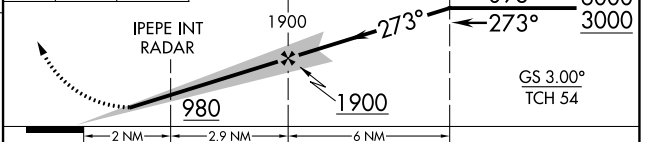
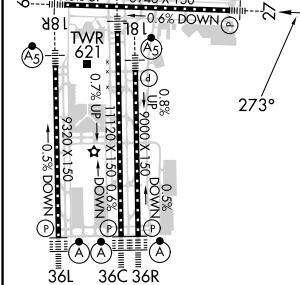
MEMPHIS INTL (MEM)

RNAV 1-GPS or RADAR required for procedure entry.		MALSR	MISSED APPROACH: Climb to 5000 and intercept MEM VORTAC R-285 to GOWRI INT/17 DME and hold, continue climb-in-hold to 5000.
<p>▼ For inop ALS, increase S-ILS Cat E visibility to RVR 4000, and S-LOC Cat E visibility to 2 SM, IPEPE fix minimums S-LOC Cat E visibility to 1/4 SM.</p> <p>▲ *RVR 1800 authorized with use of FD or AP or HUD to DA.</p>			
MEMPHIS APP CON		MEMPHIS TOWER	GND CON
119.1 291.6 (176°-355°)	(Rwy 9-27)	118.3 257.8	(Rwy 9-27)
125.8 338.3 (356°-175°)	(Rwys 18C-36C, 18L-36R)	119.7 257.8	(Rwys 18C-36C, 18L-36R)
	(Rwy 18R-36L)	128.425 257.8	(Rwy 18R-36L)
			121.0 379.2
			121.9 379.2
			121.65 379.2

D-ATIS 127.75	CLNC DEL 125.2	CPDLC
-------------------------	--------------------------	-------



ELEV 341	D	TDZE 292	5000	MEM R-285	GOWRI INT	GRND INT RADAR	GRIIT INT RADAR	One Minute Holding Pattern
----------	----------	----------	------	-----------	-----------	----------------	-----------------	----------------------------



HIRL all Rwy		TDZ/CL Rwy 18L, 18C, 18R, 36R, 36C, and 36L		
FAF to MAP 4.9 NM				
Knots	60	90	120 150 180	
Min:Sec	4:54	3:16	2:27 1:58 1:38	
CATEGORY	A	B	C D E	
S-ILS 27 *	492/24 200 (200-1/2)			
S-LOC 27	980/24	688 (700-1/2)	980-1 1/2	688 (700-1 1/2)
C CIRCLING	980-1	639 (700-1)	980-2	1020-2 1/4 679 (700-2 1/4) 1140-2 3/4 799 (800-2 3/4)
IPEPE FIX MINIMUMS (DUAL VOR RECEIVERS OR RADAR REQUIRED)				
S-LOC 27	720/24	428 (400-1/2)	720/40	428 (400-3/4)
C CIRCLING	940-1	599 (600-1)	940-1 1/2	1020-2 1/4 679 (700-2 1/4) 799 (800-2 3/4)

SE-1, 11 JUL 2024 to 08 AUG 2024

SE-1, 11 JUL 2024 to 08 AUG 2024