

LOC/DME I-OHN <b>108.9</b> Chan <b>26</b>	APP CRS <b>360°</b>	Rwy Idg <b>9320</b> TDZE <b>321</b> Apt Elev <b>341</b>
---	------------------------	---

# ILS or LOC RWY 36L

MEMPHIS INTL (MEM)

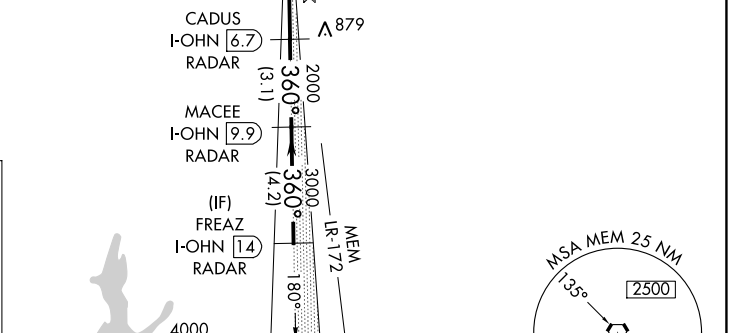
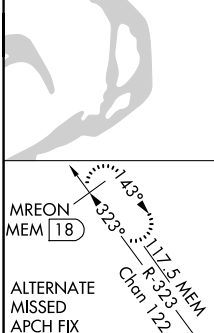
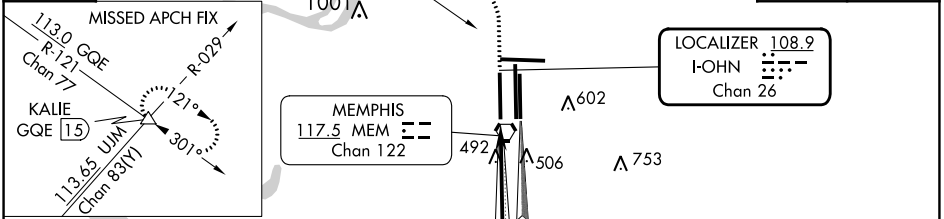
**⚠** Simultaneous approach authorized with Rwy 36C/R.  
**⚠** For inoperative ALSF, increase S-ILS 36L Cat E visibility to RVR 4000, and S-LOC 36L Cat E visibility to 1½. DME or RADAR required.

ALSF-2

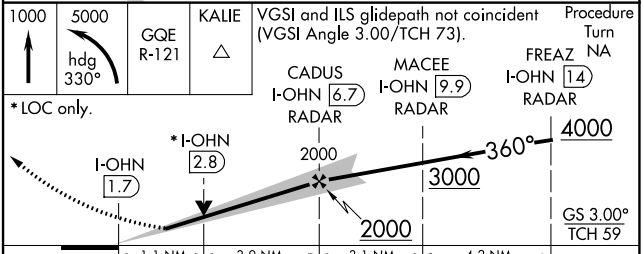
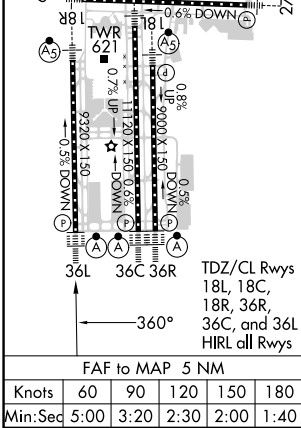
MISSED APPROACH: Climb to 1000 then climbing left turn to 5000 via heading 330° and GQE VOR/DME R-121 to KALIE INT/GQE 15 DME and hold, continue climb-in-hold to 5000.

MEMPHIS APP CON <b>119.1 291.6</b> (176°-355°) <b>125.8 338.3</b> (356°-175°)	MEMPHIS TOWER (Rwy 9-27) <b>118.3 257.8</b> (Rwys 18C-36C, 18L-36R) <b>119.7 257.8</b> (Rwy 18R-36L) <b>128.425 257.8</b>	GND CON (Rwy 9-27) <b>121.0 379.2</b> (Rwys 18C-36C, 18L-36R) <b>121.9 379.2</b> (Rwy 18R-36L) <b>121.65 379.2</b>
---	--	---

D-ATIS <b>127.75</b>	<b>113.0 GQE</b> Chan 77	R-121	Λ720	CLNC DEL <b>125.2</b>	CPDLC
-------------------------	--------------------------	-------	------	--------------------------	-------



ELEV <b>341</b>	<b>D</b>	TDZE <b>321</b>
-----------------	----------	-----------------



CATEGORY	A	B	C	D	E
S-ILS 36L	521/18		200 (200-½)	521/24 200 (200-½)	
S-LOC 36L	760/24	439 (500-½)	760/40 439 (500-¾)	760/50	439 (500-1)
<input checked="" type="checkbox"/> CIRCLING	940-1	599 (600-1)	940-1½ 599 (600-1½)	1020-2¼ 679 (700-2¼)	1140-2¾ 799 (800-2¾)

SE-1, 11 JUL 2024 to 08 AUG 2024

SE-1, 11 JUL 2024 to 08 AUG 2024