

MIAMI NINE DEPARTURE  
(MIA9.MIA) 19MAY22

MIAMI NINE DEPARTURE  
(MIA9.MIA) 24081

AL-256 (FAA)

MIAMI-OPA LOCKA EXEC (OPT)  
MIAMI, FLORIDA

RADAR and DME required.

**TOP ALTITUDE:  
ASSIGNED BY ATC**

MIAMI DEP CON  
119.45 290.325  
(ALTNN, BEECH, BNGOS, DORRL,  
FLMGO, FOLZZ, HURCN, ZFP)  
125.5 354.1  
(GWAVA, KETLL, MAYNR)  
ATIS  
125.9  
CLNC DEL  
119.2  
GND CON  
120.025  
OPA LOCKA TOWER \*  
134.675 (CTAF)

LEE COUNTY  
114.15 RSW  
Chan 88 (Y)

PALM BEACH  
115.7 PBI  
Chan 104

FORT LAUDERDALE  
114.4 FLL  
Chan 91

FREEPORT  
113.2 ZFP  
Chan 79

BIMINI  
116.7 ZBV  
Chan 114

VIRGINIA KEY  
117.1 VKZ  
Chan 118

DOLPHIN  
113.9 DHP  
Chan 86

SPECIAL INSTRUCTIONS  
Unless otherwise assigned,  
use departure frequency  
depicted associated with  
the transition in clearance.

NOTE: Turboprops operate in a manner  
that will result in best forward  
speed and climb rate.

NOTE: File DP in remarks section of  
flight plan.

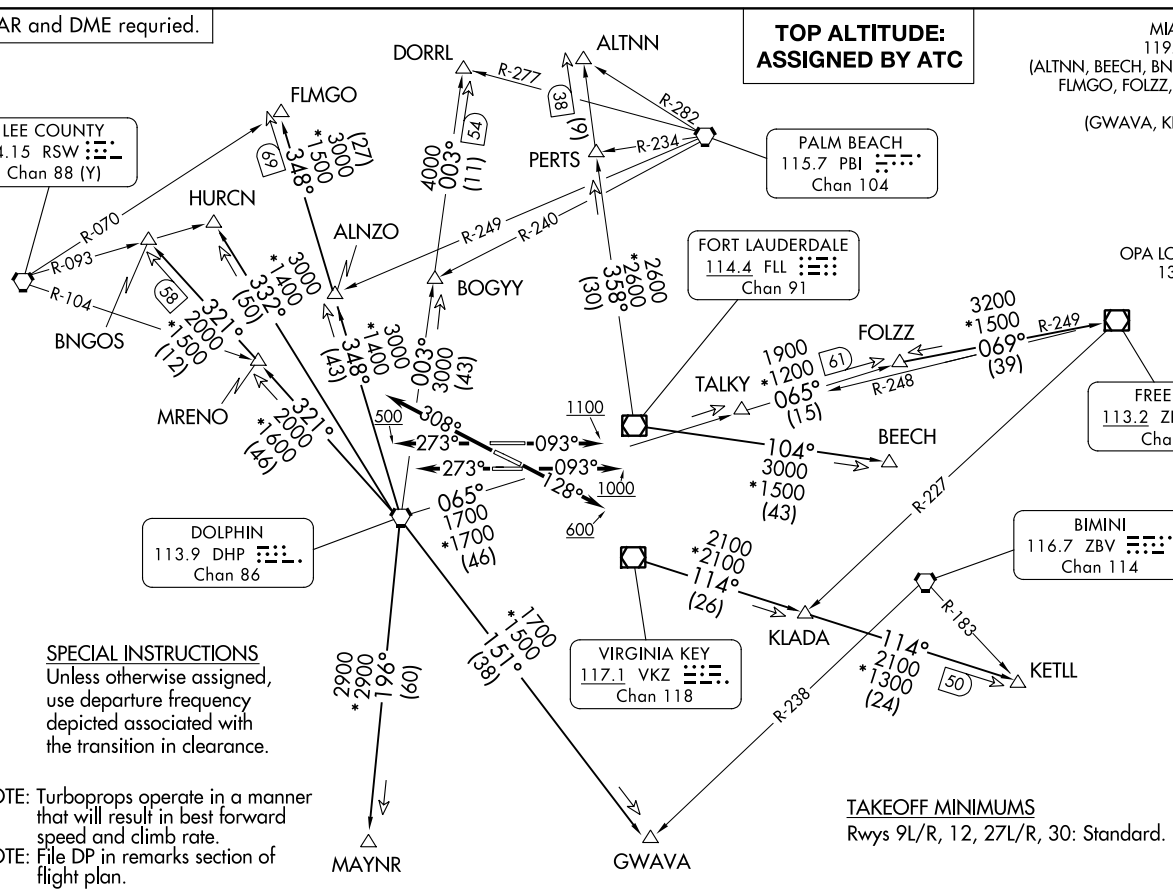
TAKEOFF MINIMUMS  
Rwys 9L/R, 12, 27L/R, 30: Standard.

NOTE: Chart not to scale.

(CONTINUED ON FOLLOWING PAGE)



MIAMI, FLORIDA  
MIAMI-OPA LOCKA EXEC (OPT)



# MIAMI NINE DEPARTURE



## DEPARTURE ROUTE DESCRIPTION

TAKEOFF RUNWAY 9L: Climb on heading 093° to 1100 before turning north, thence...

TAKEOFF RUNWAY 9R: Climb on heading 093° to 1000 before turning north, thence...

TAKEOFF RUNWAY 12: Climb on heading 128° to 600 before turning north, thence...

TAKEOFF RUNWAY 27L: Climb on heading 273° thence...

TAKEOFF RUNWAY 27R: Climb on heading 273° to 500 before turning north, thence...

TAKEOFF RUNWAY 30: Climb on heading 308° thence...

... maintain 2000 or assigned higher altitude for RADAR vectors to appropriate transition.  
Expect further clearance to filed altitude ten (10) minutes after departure.

ALTNN TRANSITION (MIA9.ALTNN): From over FLL VOR/DME on FLL R-358 to ALTNN.

BEECH TRANSITION (MIA9.BEECH): From over FLL VOR/DME on FLL R-104 to BEECH.

BNGOS TRANSITION (MIA9.BNGOS): From over DHP VORTAC on DHP R-321 to BNGOS.

DORRL TRANSITION (MIA9.DORRL): From over DHP VORTAC on DHP R-003 to DORRL.

FLMGO TRANSITION (MIA9.FLMGO): From over DHP VORTAC on DHP R-348 to FLMGO.

FOLZZ TRANSITION (MIA9.FOLZZ): From over DHP VORTAC on DHP R-065 to FOLZZ.

FREEPORT TRANSITION (MIA9.ZFP): From over DHP VORTAC on DHP R-065 to FOLZZ then on ZFP R-249 to ZFP VOR/DME.

GWAVA TRANSITION (MIA9.GWAVA): From over DHP VORTAC on DHP R-151 to GWAVA.

HURCN TRANSITION (MIA9.HURCN): From over DHP VORTAC on DHP R-332 to HURCN.

KETLL TRANSITION (MIA9.KETLL): From over VKZ VOR/DME on VKZ R-114 to KETLL.

MAYNR TRANSITION (MIA9.MAYNR): From over DHP VORTAC on DHP R-196 to MAYNR.

SE-3, 11 JUL 2024 to 08 AUG 2024

SE-3, 11 JUL 2024 to 08 AUG 2024