

WAAS CH 62922 W27A	APP CRS 273°	Rwy Idg 8002 TDZE 8 Apt Elev 8
--	------------------------	---

RNAV (GPS) RWY 27R

MIAMI-OPA LOCKA EXEC (OPF)

RNP APCH - GPS.

⚠ Baro-VNAV NA when using Miami Intl altimeter setting. For uncompensated Baro-VNAV systems, LNAV/VNAV NA below 5°C or above 54°C. When local altimeter setting not received, use Miami Intl altimeter setting and increase all DA/MDA 20 feet and Circling Cat D visibility ¼ SM. For inop ALS, increase LPV all Cats visibility to ½ SM, LNAV/VNAV all Cats to 1½ SM, and LNAV Cats C and D visibility to 1½ SM. Rwy 27R helicopter visibility reduction below ¾ SM NA.

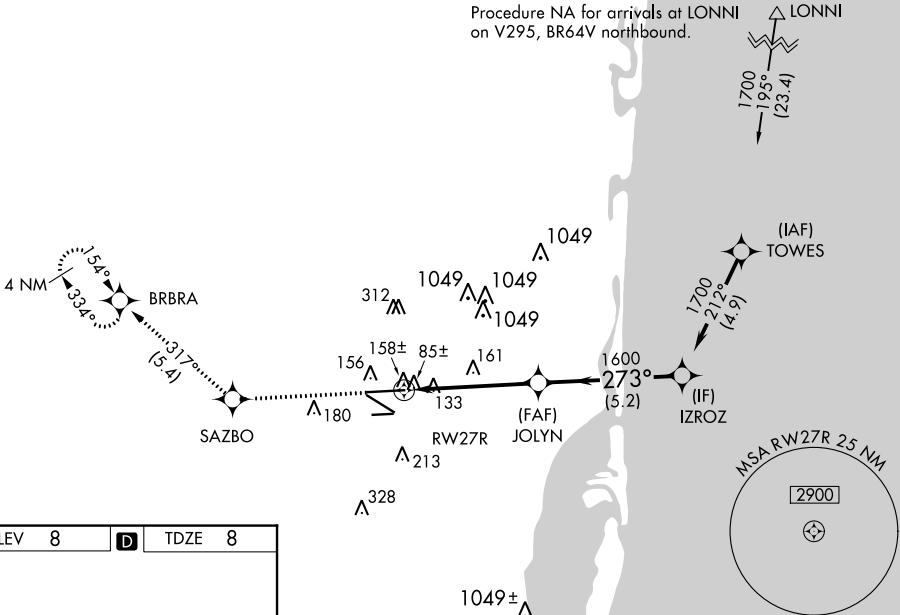
MALS



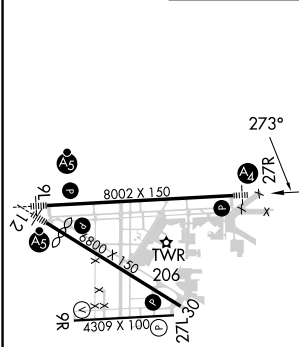
MISSED APPROACH: Climb to 2000 direct SAZBO and on track 317° to BRBRA and hold.

ATIS 125.9	MIAMI APP CON 128.6 306.975	OPA LOCKA TOWER ★ 134.675 (CTAF) 0	GND CON 120.025	CLNC DEL 119.2	GCO 119.45
----------------------	---------------------------------------	--	---------------------------	--------------------------	----------------------

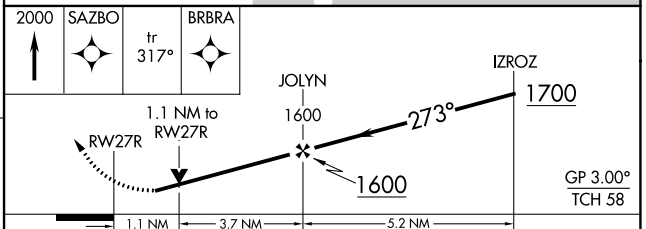
Procedure NA for arrivals at LONNI on V295, BR64V northbound.



ELEV 8	D	TDZE 8
---------------	----------	---------------



MIRL Rwy 9R-27L
HIRL Rwys 9L-27R and 12-30 **L**



CATEGORY	A	B	C	D
LPV DA		291-¾	283 (300-¾)	
LNAV/VNAV DA		413-1	405 (500-1)	
LNAV MDA	420-¾	412 (500-¾)	420-1	412 (500-1)
CIRCLING	540-1	532 (600-1)	620-1¾ 612 (700-1¾)	740-2¼ 732 (800-2¼)