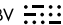


DVALL THREE ARRIVAL

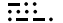
MIAMI APP CON
 120.5 350.225
 FLL D-ATIS
 135.0
 FXE ATIS
 119.85
 KHST ATIS ★
 132.275 269.9
 MIA D-ATIS
 119.15
 OPF ATIS
 125.9
 PMP ATIS
 120.55
 TMB ATIS
 124.0

**WEVER
 TURBOJET VERTICAL NAVIGATION
 PLANNING INFORMATION**

Miami Intl landing East: Expect clearance to cross at 10000' and 250K.
 Miami Intl landing West: Expect clearance to cross at 14000' and 250K.

LA BELLE
 110.4 LBV 
 Chan 41

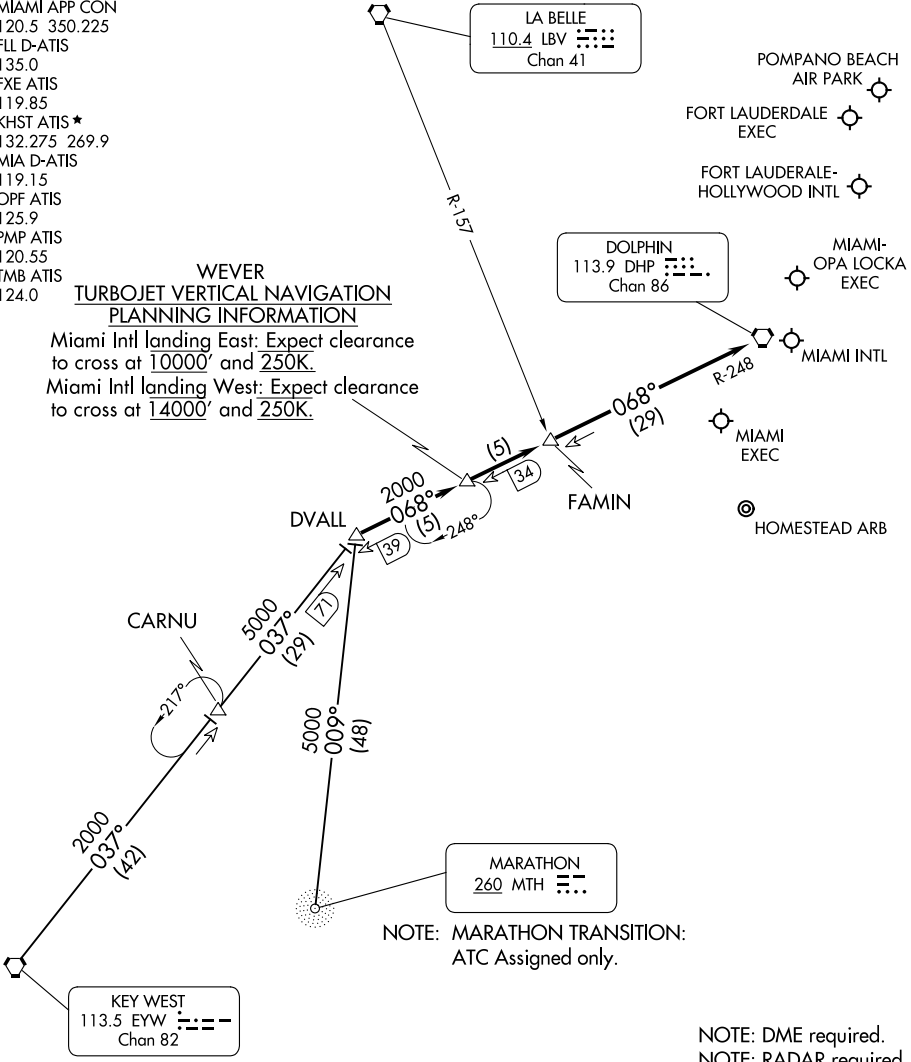
POMPANO BEACH AIR PARK
 FORT LAUDERDALE EXEC
 FORT LAUDERDALE-HOLLYWOOD INTL

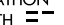
DOLPHIN
 113.9 DHP 
 Chan 86

MIAMI-OPA LOCKA EXEC

SE-3, 11 JUL 2024 to 08 AUG 2024

SE-3, 11 JUL 2024 to 08 AUG 2024



MARATHON
 260 MTH 
 NOTE: MARATHON TRANSITION:
 ATC Assigned only.

NOTE: DME required.
 NOTE: RADAR required.
 NOTE: Chart not to scale.

KEY WEST TRANSITION (EYW.DVALL3): From over EYW VORTAC on EYW R-037 to DVALL INT. Thence. . . .
MARATHON TRANSITION (MTH.DVALL3): From over MTH NDB on bearing 009° to DVALL INT. Thence. . . .
 . . . From over DVALL INT via DHP R-248 to DHP VORTAC. Expect RADAR vectors to final approach course after FAMIN INT.

DVALL THREE ARRIVAL