

LOC I-MIA 109.5	APP CRS 272°	Rwy ldg 12755 TDZE 9 Apt Elev 9
---------------------------	------------------------	--

ILS or LOC RWY 27

MIAMI INTL (MIA)

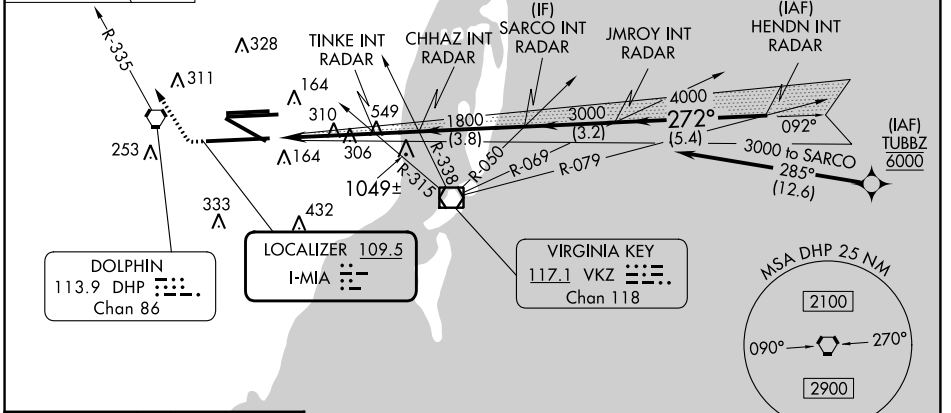
DME required. RNP APCH-GPS. From TUBBZ.

Simultaneous approach authorized.
Inop table does not apply to S-LOC 27 Cats C/D.
* RVR 1800 authorized with use of FD or AP or HUD to DA.

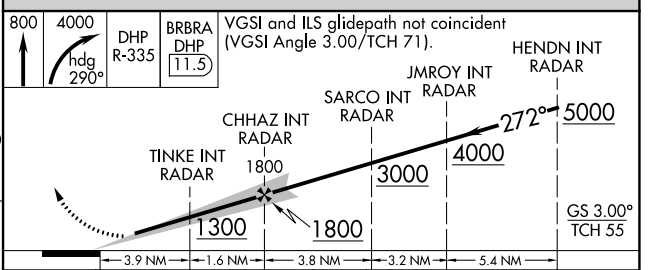
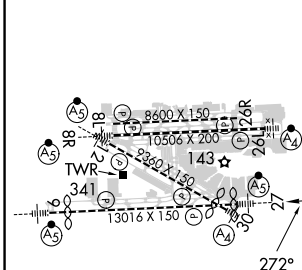
MALSR

MISSED APPROACH: Climb to 800 then climbing right turn to 4000 on heading 290° and DHP VORTAC R-335 to BRBRA/DHP 11.5 DME and hold, continue climb-in-hold to 4000.

D-ATIS ARR 119.15 DEP 133.675	MIAMI APP CON 124.85 322.3	MIAMI TOWER 118.3 256.9	GND CON 121.8 (8L/8R/12/26L/26R) 127.5 (9/27/30)	348.6	CLNC DEL 135.35	CPDLC
---	--------------------------------------	-----------------------------------	--	--------------	---------------------------	-------



ELEV 9	D	TDZE 9
--------	----------	--------



TDZ/CL Rwy 8R REIL Rwys 8L and 26R HIRL all Rwys	FAF to MAP 5.5 NM				
Knots	60	90	120	150	180
Min:Sec	5:30	3:40	2:45	2:12	1:50
S-ILS 27 *	209/24 200 (200-1/2)				
S-LOC 27	1300/40 1291 (1300-3/4)	1300/55 1291 (1300-1)	1300-3	1291 (1300-3)	
TINKE FIX MINIMUMS (DUAL VOR RECEIVERS OR RADAR REQUIRED)					
S-LOC 27	560/24 551 (600-1/2)		560/60 551 (600-1/4)		

SE-3, 11 JUL 2024 to 08 AUG 2024

SE-3, 11 JUL 2024 to 08 AUG 2024