

MIAMI, FLORIDA

AL-257 (FAA)

24137

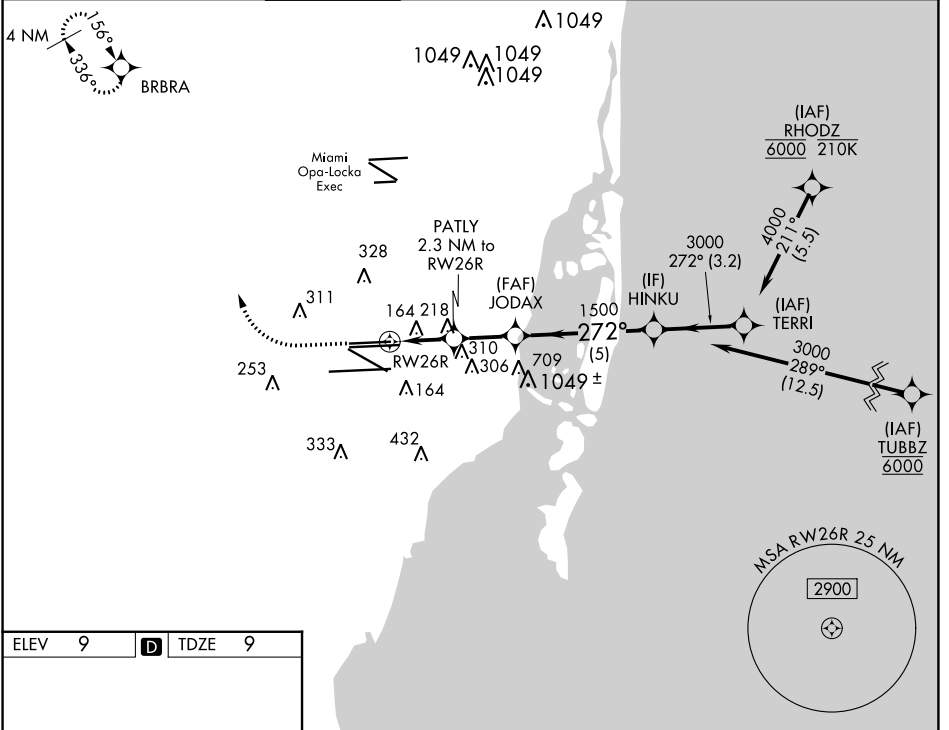
WAAS CH 86903 W26A	APP CRS 272°	Rwy Idg 8600 TDZE 9 Apt Elev 9
--	------------------------	---

RNAV (GPS) RWY 26R

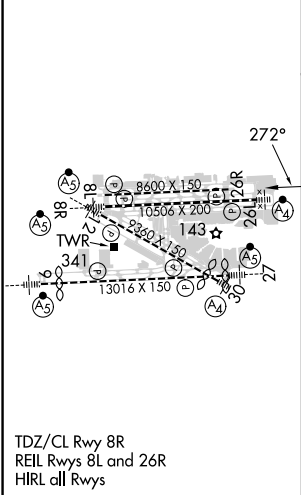
MIAMI INTL (MIA)

RNP APCH - GPS.	MISSED APPROACH: Climb to 800 then climbing right turn to 4000 direct BRBRA and hold, continue climb-in-hold to 4000.
<p>Simultaneous approach authorized. LNAV procedure NA during simultaneous operations. Use of FD or AP required during simultaneous operations. For uncompensated Baro-VNAV systems, LNAV/VNAV NA below 9°C or above 54°C.</p>	

D-ATIS ARR 119.15 DEP 133.675	MIAMI APP CON 124.85 322.3	MIAMI TOWER 118.3 256.9	GND CON 121.8 (Rwys 8L/R, 12, 26L/R) 127.5 (Rwys 9, 27, 30)	348.6	CLNC DEL 135.35	CPDLC
---	--------------------------------------	-----------------------------------	---	--------------	---------------------------	-------



ELEV 9	D	TDZE 9
--------	----------	--------



	800	4000	BRBRA					
				PATLY 2.3 NM to RWY 26R	JODAX 1500	HINKU 3000	TERRI 4000	
				1.3 NM to RWY 26R			GP 3.00° TCH 60	
				1.3	1	2.2	5	3.2
CATEGORY	A		B		C		D	
LPV DA	265-3/4		256 (300-3/4)					
LNAV/VNAV DA	432-1 1/4		423 (500-1 1/4)					
LNAV MDA	480-1	471 (500-1)	480-1 3/8		471 (500-1 3/8)			

MIAMI, FLORIDA
Amdt 5 14JUL22

25°48'N-80°17'W

MIAMI INTL (MIA) RNAV (GPS) RWY 26R

SE-3, 11 JUL 2024 to 08 AUG 2024

SE-3, 11 JUL 2024 to 08 AUG 2024