

APP CRS	Rwy Idg	<b>8579</b>
<b>124°</b>	TDZE	<b>8</b>
	Apt Elev	<b>9</b>

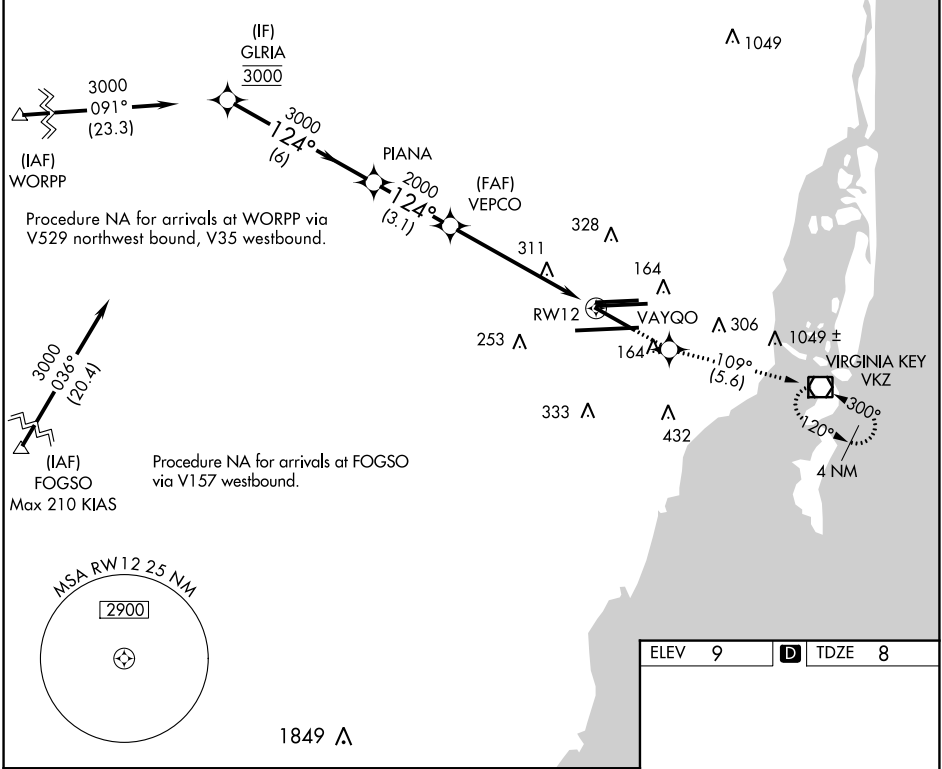
# RNAV (RNP) Y RWY 12

MIAMI INTL (MIA)

**GPS Required.** For inoperative MALSR, increase 0.30 all Cats visibility to 1½. For uncompensated Baro-VNAV systems, procedure NA below 6°C (42°F) or above 49°C (120°F).

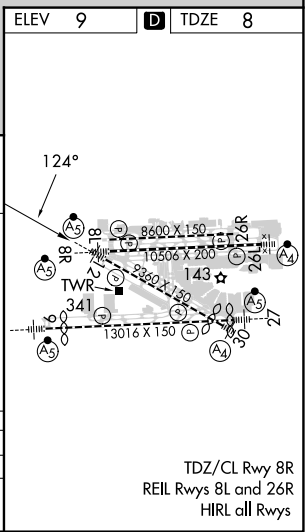
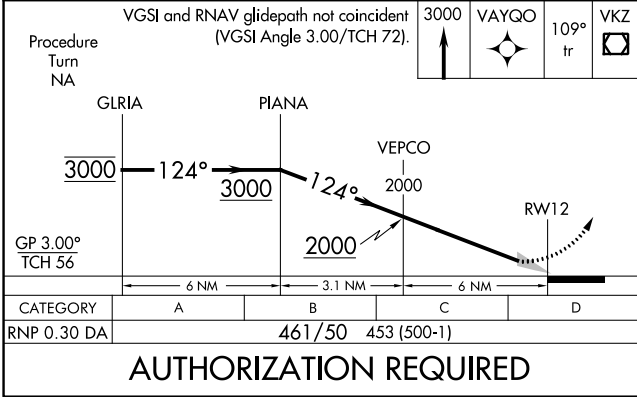
**MALSR**  
 MISSED APPROACH: Climb to 3000 direct VAYQO and via 109° track to VKZ VOR/DME and hold, continue climb-in-hold to 3000.

D-ATIS ARR <b>119.15</b> DEP <b>133.675</b>	MIAMI APP CON <b>124.85 322.3</b>	MIAMI TOWER <b>118.3 256.9</b>	GND CON <b>121.8</b> (8L/8R/12/26L/26R) <b>127.5</b> (9/27/30)	<b>348.6</b>	CLNC DEL <b>135.35</b>	CPDLC
---	--------------------------------------	-----------------------------------	--	--------------	---------------------------	-------



SE-3, 11 JUL 2024 to 08 AUG 2024

SE-3, 11 JUL 2024 to 08 AUG 2024



**AUTHORIZATION REQUIRED**