

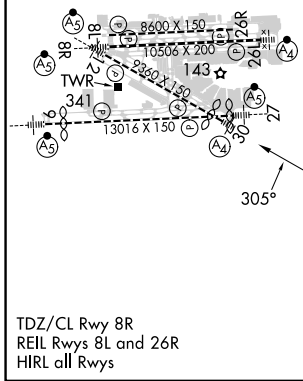
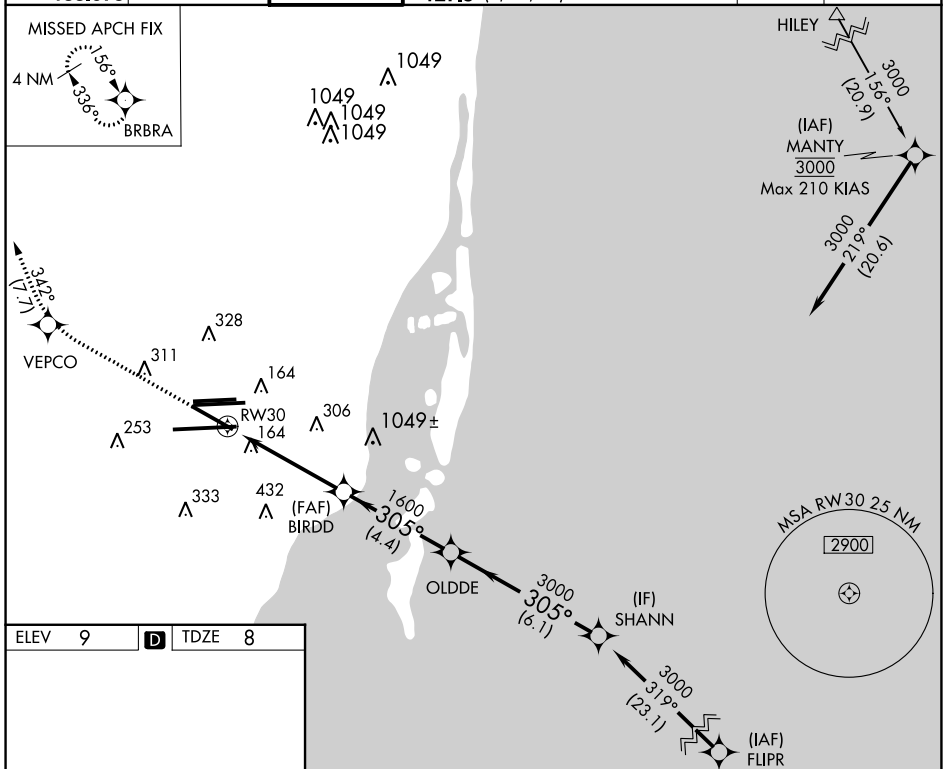
APP CRS	Rwy Idg	7913
305°	TDZE	8
	Apt Elev	9

RNAV (RNP) Y RWY 30

MIAMI INTL (MIA)

<p>NA</p> <p>For inoperative MALS, increase RNP 0.23 all Cats visibility to 1½, RNP 0.30 all Cats to 1¾. GPS Required.</p> <p>For uncompensated Baro-VNAV systems, procedure NA below 6°C (42°F) or above 48°C (119°F).</p>	<p>MALS</p> <p>A2</p>	<p>MISSED APPROACH: Climb to 3000 direct VEPCO and via 342° track to BRBRA and hold.</p>
--	------------------------------	--

D-ATIS	MIAMI APP CON	MIAMI TOWER	GND CON	CLNC DEL	CPDLC
ARR 119.15	124.85 322.3	118.3 256.9	121.8 (8L/8R/12/26L/26R)	135.35	
DEP 133.675			127.5 (9/27/30)	348.6	



ELEV 9	D	TDZE 8				
3000	VEPCO	342° tr	BRBRA	VGSi and RNAV glidepath not coincident (VGSi Angle 3.00/TCH 71).		Procedure Turn NA
<p>OLDDDE</p> <p>SHANN</p>		<p>305°</p> <p>3000</p>		<p>GP 3.00°</p> <p>TCH 51</p>		
<p>RW30</p> <p>BIRDD</p> <p>1600</p>		<p>3000</p>		<p>4.8 NM</p> <p>4.4 NM</p> <p>6.1 NM</p>		
CATEGORY	A	B	C	D		
RNP 0.23 DA	426-1¼		418 (500-1¼)			
RNP 0.30 DA	521-1½		513 (600-1½)			

AUTHORIZATION REQUIRED

SE-3, 11 JUL 2024 to 08 AUG 2024

SE-3, 11 JUL 2024 to 08 AUG 2024