

WAAS CH 90529 W04A	APP CRS 045°	Rwy Idg TDZE Apt Elev	4605 2851 2872
--	------------------------	-----------------------------	---

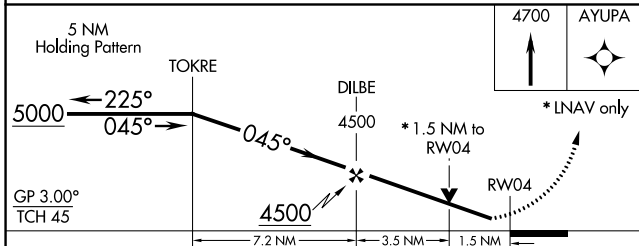
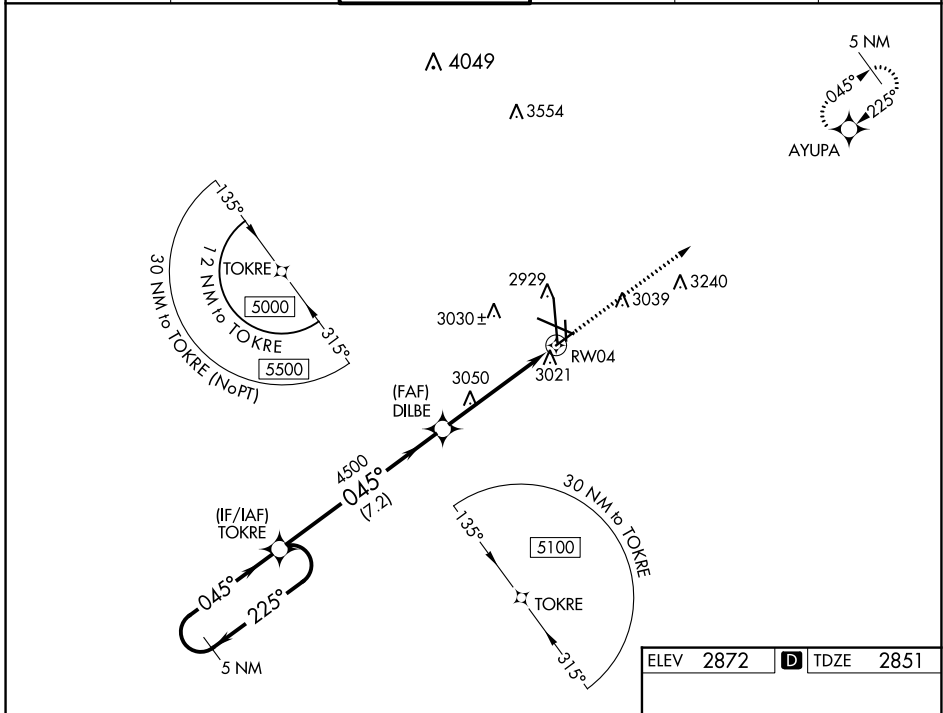
RNAV (GPS) RWY 4

MIDLAND INTL AIR AND SPACE PORT (M.A.F.)

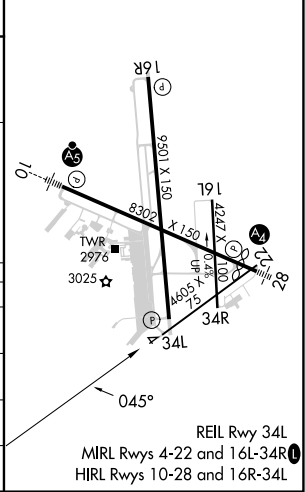
▼ For uncompensated Baro-VNAV systems, LNAV/VNAV NA below -11°C (13°F) or above 25°C (77°F). Circling Rwy 16L NA at night. Rwy 4 helicopter visibility reduction below ¾ SM NA. DME/DME RNP-0.3 NA.

MISSED APPROACH: Climb to 4700 direct AYUPA and hold.

ATIS 126.8 235.975	MIDLAND APP CON* 124.6 290.4	MIDLAND TOWER* 118.7 (CTAF) 0273.45	GND CON 121.9 348.6	CLNC DEL 118.05 317.65	UNICOM 122.95
------------------------------	--	---	-------------------------------	----------------------------------	-------------------------



ELEV 2872	D TDZE 2851
-----------	-------------



CATEGORY	A	B	C	D
LPV DA		3051-¾	200 (200-¾)	
LNAV/VNAV DA		3283-1½	432 (500-1½)	
LNAV MDA	3360-1	509 (500-1)	3360-1¾	509 (500-1¾)
CIRCLING	3440-1	568 (600-1)	3440-1½	3520-2
			568 (600-1½)	648 (700-2)

SC-3, 11 JUL 2024 to 08 AUG 2024

SC-3, 11 JUL 2024 to 08 AUG 2024