

LOC/DME I-BLY 110.3 Chan 40	APP CRS 191°	Rwy 19R Idg 9205 TDZE 672 Apt Elev 729	Rwy 19L Idg 4182 TDZE 675 Apt Elev 729
---	------------------------	---	---

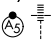
ILS or LOC RWY 19R

GENERAL MITCHELL INTL (MKE)

RADAR required for procedure entry, RADAR or DME required for LOC only.

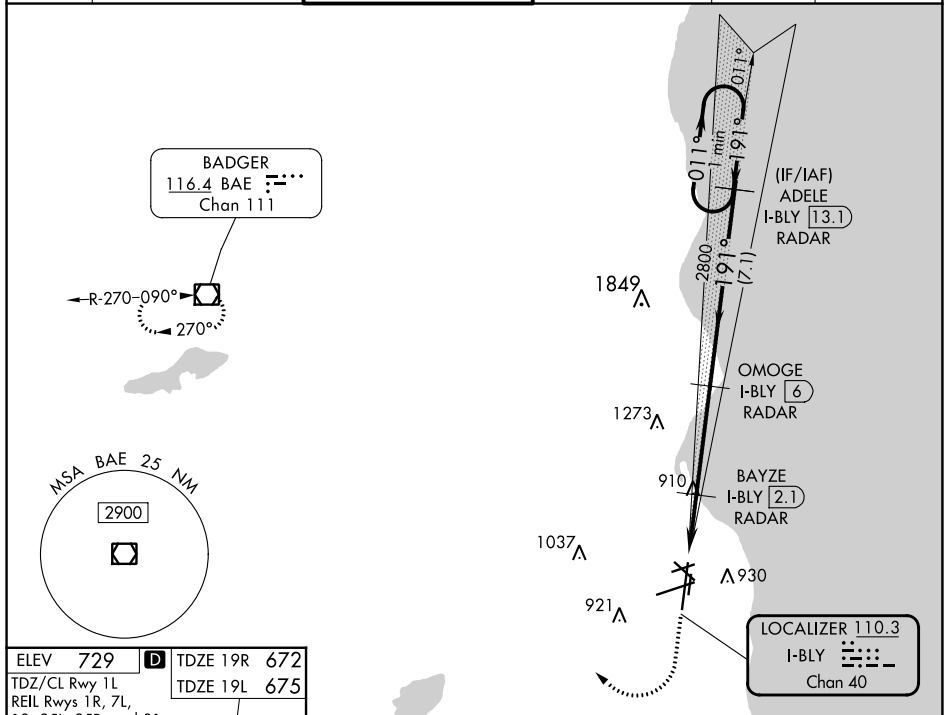
▼ For inop HALS, increase visibility to 1 mile.
RVR 1800 authorized with use of FD or AP or HUD to DA.

MALS Rwy 19R

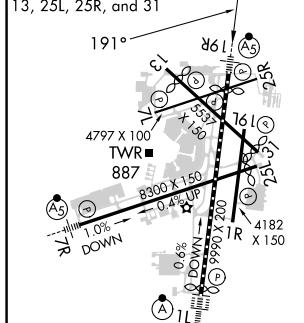


MISSED APPROACH: Climb to 2800 then right turn direct BAE VOR/DME and hold.

D-ATIS 126.4	MILWAUKEE APP CON 126.5 307.0	MILWAUKEE TOWER 124.575 269.05	GND CON 121.8 263.125	CLNC DEL 120.8	CPDLC
------------------------	---	--	---------------------------------	--------------------------	-------



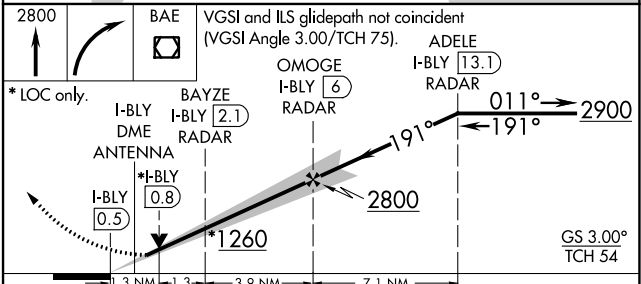
ELEV 729	TDZE 19R 672
TDZ/CL Rwy 1L	TDZE 19L 675
REIL Rwys 1R, 7L, 13, 25L, 25R, and 31	



HIRL Rwys 1L-19R and 7R-25L
MIRL Rwys 1R-19L, 13-31, and 7L-25R

FAF to MAP 6.5 NM

Knots	60	90	120	150	180
Min:Sec	6:30	4:20	3:15	2:36	2:10



CATEGORY	A	B	C	D
S-ILS 19R#	872/24 200 (200-1/2)			
S-LOC 19R	1160/24	488 (500-1/2)	1160/50	488 (500-1)
SIDESTEP 19L	1160-1	485 (500-1)	1160-1/2 485 (500-1/2)	1160-2 485 (500-2)
<input checked="" type="checkbox"/> CIRCLING	1240-1	511 (600-1)	1240-1/2 511 (600-1/2)	1360-2 631 (700-2)

EC-3, 11 JUL 2024 to 08 AUG 2024

EC-3, 11 JUL 2024 to 08 AUG 2024