

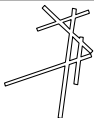
(UECKR6.UECKR) 24137

# UECKR SIX DEPARTURE (RNAV)

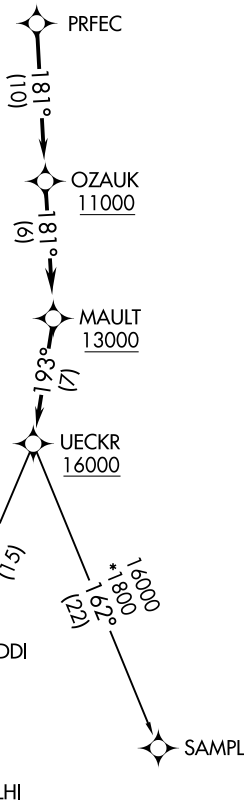
AL-262 (FAA)

GENERAL MITCHELL INTL (MKE)  
MILWAUKEE, WISCONSIN

D-ATIS  
126.4  
CLNC DEL  
120.8  
CPDLC  
GND CON  
121.8 263.125  
MILWAUKEE DEP CON  
135.875 317.725 (SE)  
125.35 307.0 (NW)



**TOP ALTITUDE:  
ASSIGNED BY ATC**



### TAKEOFF MINIMUMS

Rwys 1L/R, 7L, 13, 19L/R, 25L/R: Standard.  
Rwy 7R: 300-1½ or standard with minimum climb of 290' per NM to 1100.  
Rwy 31: 300-1½ or standard with minimum climb of 255' per NM to 1000.

- NOTE: RNAV 1.
- NOTE: GPS or DME/DME/IRU required.
- NOTE: RADAR required.
- NOTE: Turbojet aircraft maintain 250K until advised by ATC.
- NOTE: Notify ATC if unable to comply with crossing restrictions.

NOTE: Chart not to scale.

### DEPARTURE ROUTE DESCRIPTION

TAKEOFF RUNWAYS 1L/R, 7L/R, 13, 19L/R, 25L/R, 31: Climb on assigned heading for RADAR vectors to PRFEC, thence....

....on track 181° to cross OZAUK at or above 11000, then on track 181° to cross MAULT at or above 13000, then on track 193° to cross UECKR at or above 16000, then on (transition). Maintain ATC assigned altitude, expect filed altitude ten minutes after departure.

DELHI TRANSITION (UECKR6.DELHI)

SAMPL TRANSITION (UECKR6.SAMPL)

# UECKR SIX DEPARTURE (RNAV)

(UECKR6.UECKR) 26MAR20

MILWAUKEE, WISCONSIN  
GENERAL MITCHELL INTL (MKE)

EC-3, 11 JUL 2024 to 08 AUG 2024

EC-3, 11 JUL 2024 to 08 AUG 2024