

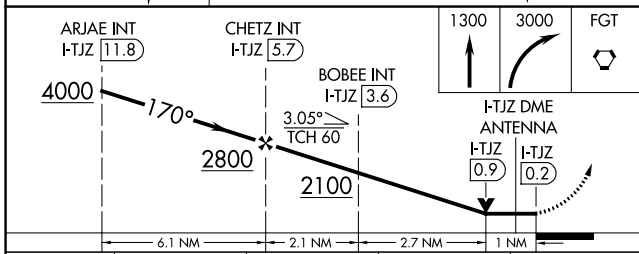
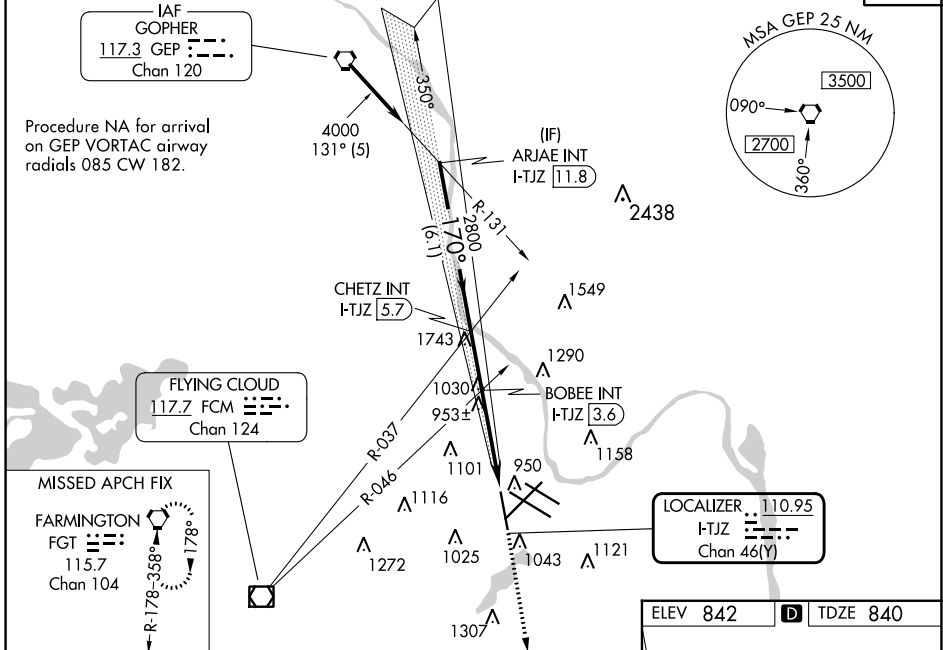
LOC/DME I-TJZ <b>110.95</b> Chan 46(Y)	APP CRS <b>170°</b>	Rwy Idg 8000	TDZE 840	Apt Elev 842
--	------------------------	-----------------	-------------	-----------------

# LOC RWY 17

MINNEAPOLIS-ST PAUL INTL/WOLD-CHAMBERLAIN (MSP)

<b>⚠</b> Helicopter visibility reduction below RVR 4000 NA.	MISSED APPROACH: Climb to 1300 then climbing right turn to 3000 direct FGT VORTAC and hold.
---	---

D-ATIS ARR <b>135.35 239.275</b> DEP <b>120.8</b>	MINNEAPOLIS APP CON <b>118.725 335.65</b> (Rwy 35) <b>119.3 335.65</b> (12L-30R, 4-22, 17) <b>126.95 335.65</b> (12R-30L)	MINNEAPOLIS TOWER <b>123.675 273.55</b> (17-35) <b>123.95 273.55</b> (12L-30R) <b>126.7 273.55</b> (12R-30L, 4-22)	GND CON <b>N 121.8 348.6</b> <b>S 121.9 348.6</b> <b>W 127.925 348.6</b>	CLNC DEL <b>133.2</b>
				CPDLC



ELEV 842	TDZE 840
----------	----------

HIRL all Rwys  
REIL Rwy 17

TDZ/CL Rws 12L, 12R, 30L, and 35

FAF to MAP 5.9 NM

Knots	60	90	120	150	180
Min:Sec	5:54	3:56	2:57	2:22	1:58

CATEGORY	A	B	C	D
S-17	2100/60 1260 (1300-1½)	2100-1½ 1260 (1300-1½)	2100-3	1260 (1300-3)
<b>C</b> CIRCLING	2100-1¼ 1258 (1300-1¼)	2100-1½ 1258 (1300-1½)	2100-3	1258 (1300-3)
BOBEE FIX MINIMUMS (DUAL VOR RECEIVERS OR DME REQUIRED)				
S-17	1220/55		380 (400-1)	
<b>C</b> CIRCLING	1360-1	518 (600-1)	1460-1¾ 618 (700-1¾)	1660-2¾ 818 (900-2¾)

# LOC RWY 17

NC-1, 11 JUL 2024 to 08 AUG 2024

NC-1, 11 JUL 2024 to 08 AUG 2024