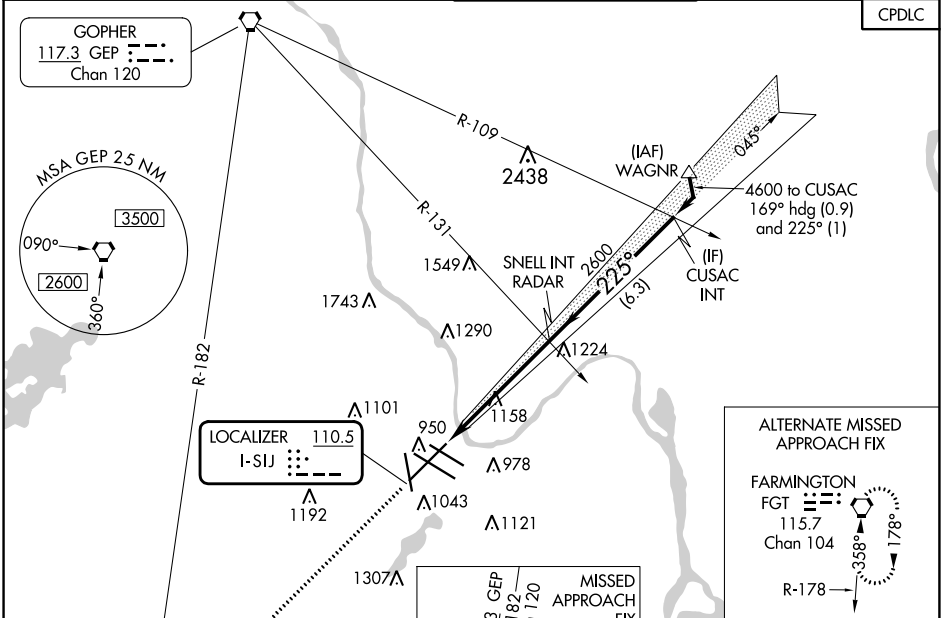


LOC I-SIJ 110.5	APP CRS 225°	Rwy ldg 10006 TDZE 828 Apt Elev 842
---------------------------	------------------------	--

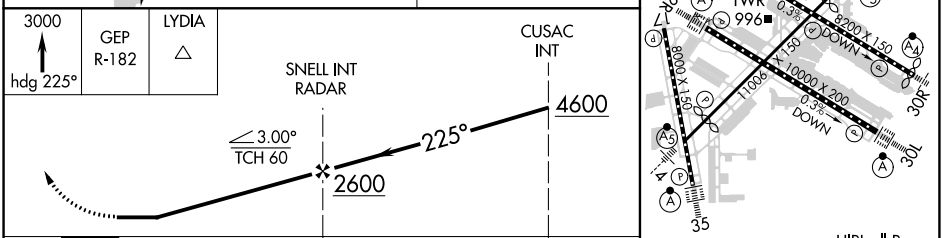
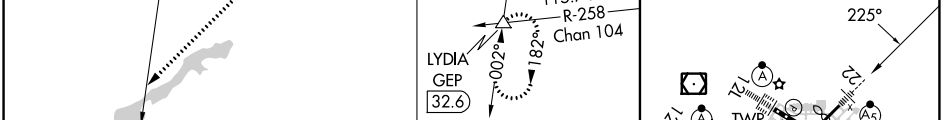
LOC RWY 22

MINNEAPOLIS-ST PAUL INTL/WOLD-CHAMBERLAIN (MSP)

	Rwy 22 helicopter visibility reduction below RVR 4000 NA. For inop ALS, increase S-22 Cat A and B visibility to RVR 5500, and Cat E visibility to 1 3/4 SM.	MALSRS 	MISSED APPROACH: Climb to 3000 on heading 225° and GEP VORTAC R-182 to LYDIA INT/GEP 32.6 DME and hold.	<table border="1"> <tr> <td>D-ATIS</td> <td>MINNEAPOLIS APP CON</td> <td>MINNEAPOLIS TOWER</td> <td>GND CON</td> <td rowspan="2">CLNC DEL 133.2</td> </tr> <tr> <td>ARR 135.35 239.275 DEP 120.8</td> <td>118.725 335.65 (Rwy 35) 119.3 335.65 (12L-30R, 4-22, 17) 126.95 335.65 (12R-30L)</td> <td>123.675 273.55 (17-35) 123.95 273.55 (12L-30R) 126.7 273.55 (12R-30L, 4-22)</td> <td>N 121.8 348.6 S 121.9 348.6 W 127.925 348.6</td> </tr> </table>	D-ATIS	MINNEAPOLIS APP CON	MINNEAPOLIS TOWER	GND CON	CLNC DEL 133.2	ARR 135.35 239.275 DEP 120.8	118.725 335.65 (Rwy 35) 119.3 335.65 (12L-30R, 4-22, 17) 126.95 335.65 (12R-30L)	123.675 273.55 (17-35) 123.95 273.55 (12L-30R) 126.7 273.55 (12R-30L, 4-22)	N 121.8 348.6 S 121.9 348.6 W 127.925 348.6
	D-ATIS	MINNEAPOLIS APP CON	MINNEAPOLIS TOWER		GND CON	CLNC DEL 133.2							
ARR 135.35 239.275 DEP 120.8	118.725 335.65 (Rwy 35) 119.3 335.65 (12L-30R, 4-22, 17) 126.95 335.65 (12R-30L)	123.675 273.55 (17-35) 123.95 273.55 (12L-30R) 126.7 273.55 (12R-30L, 4-22)	N 121.8 348.6 S 121.9 348.6 W 127.925 348.6										



ELEV 842	D TDZE 828
----------	-------------------



CATEGORY	A	B	C	D	E	TDZ/CL Rwys 12L, 12R, 30L, and 35 FAF to MAP 5.4 NM HIRL all Rwys REIL Rwy 17 Knots 60 90 120 150 180 Min:Sec 5:24 3:36 2:42 2:10 1:48
S-22	1420/40	592 (600-3/4)	1420-1 1/4	592 (600-1 1/4)		
C CIRCLING	1420-1	578 (600-1)	1460-1 3/4 618 (700-1 3/4)	1620-2 1/2 778 (800-2 1/2)	1800-3 958 (1000-3)	

LOC RWY 22

NC-1, 11 JUL 2024 to 08 AUG 2024

NC-1, 11 JUL 2024 to 08 AUG 2024