

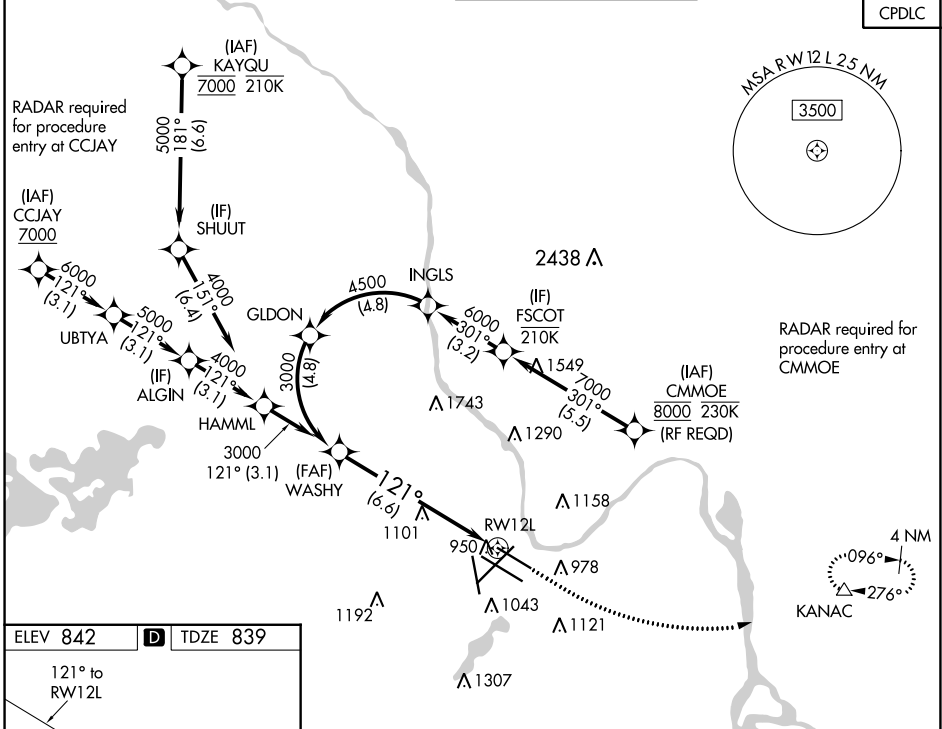
APP CRS	Rwy Idg	7620
121°	TDZE	839
	Apt Elev	842

RNAV (RNP) Y RWY 12L

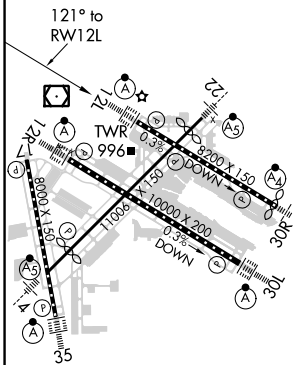
MINNEAPOLIS-ST PAUL INTL/WOLD-CHAMBERLAIN (MSP)

<p>▽ For uncompensated Baro-VNAV systems, procedure NA below -20°C (-4°F) or above 54°C (130°F). GPS required.</p>	<p>ALSIF-2</p>	<p>MISSED APPROACH: Climb to 1300 then climbing left turn to 3000 direct KANAC and hold.</p>
	<p>CPDLC</p>	

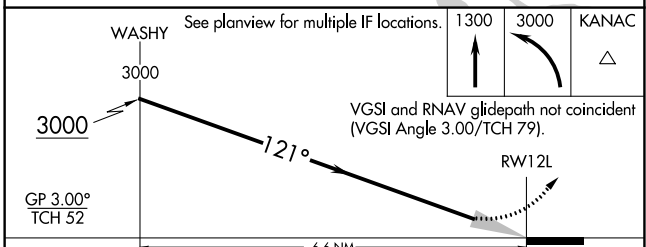
D-ATIS	MINNEAPOLIS APP CON	MINNEAPOLIS TOWER	GND CON	CLNC DEL
ARR 135.35 239.275	118.725 335.65 (Rwy 35)	123.675 273.55 (17-35)	N 121.8 348.6	133.2
DEP 120.8	119.3 335.65 (12L-30R, 4-22, 17)	123.95 273.55 (12L-30R)	S 121.9 348.6	
	126.95 335.65 (12R-30L)	126.7 273.55 (12R-30L, 4-22)	W 127.925 348.6	



ELEV 842	D	TDZE 839
----------	----------	----------



HIRL all Rwys
REIL Rwy 17
TDZ/CL Rwys 12L, 12R, 30L, and 35



CATEGORY	A	B	C	D
RNP 0.15 DA		1150/24	311 (400-½)	
RNP 0.30 DA		1241/45	402 (400-⅔)	

AUTHORIZATION REQUIRED

NC-1, 11 JUL 2024 to 08 AUG 2024

NC-1, 11 JUL 2024 to 08 AUG 2024