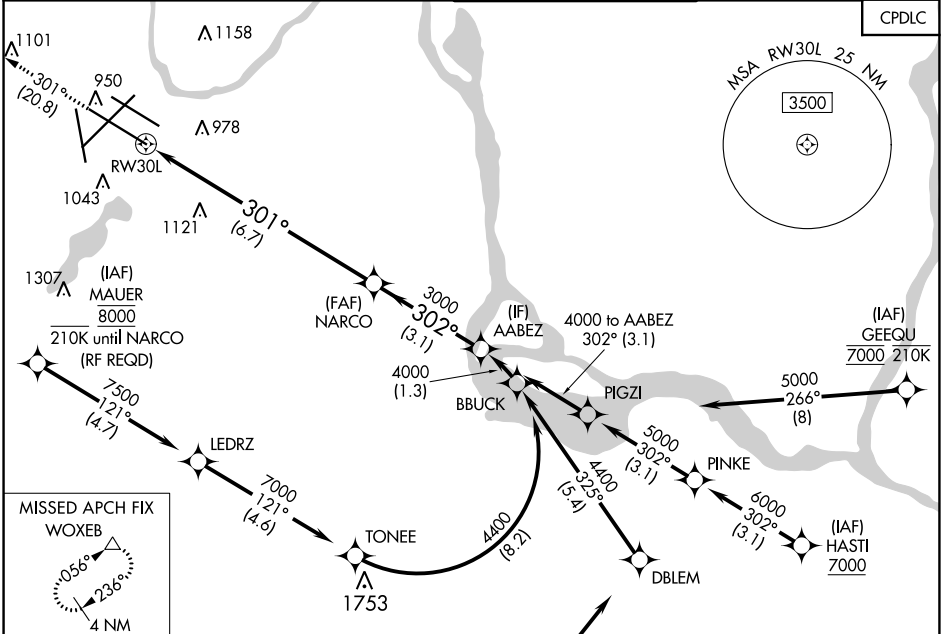


APP CRS	Rwy Idg	10000
301°	TDZE	823
	Apt Elev	842

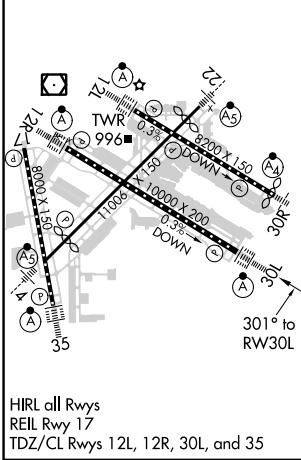
RNAV (RNP) Y RWY 30L

MINNEAPOLIS-ST PAUL INTL/WOLD-CHAMBERLAIN (MSP)

▽ For uncompensated Baro-VNAV systems, procedure NA below -19°C (-2°F) or above 54°C (130°F). GPS required. Simultaneous approaches authorized with Rwy 30R and ILS V RWY 35 (CONVERGING).	ALSF-2 	MISSED APPROACH: Climb to 3000 on track 301° to WOXEB and hold.	
		D-ATIS ARR 135.35 239.275 DEP 120.8	MINNEAPOLIS APP CON 118.725 335.65 (Rwy 35) 119.3 335.65 (12L-30R, 4-22, 17) 126.95 335.65 (12R-30L)
CLNC DEL 133.2			



ELEV 842	D	TDZE 823
----------	----------	----------



3000 WOXEB 	VGSI and RNAV glidepath not coincident (VGSI Angle 3.00/TCH 78).		
tr 301° 	GP 3.00° TCH 55		
CATEGORY	A	B	C
RNP 0.30 DA	1150/30 327 (400-%)		
AUTHORIZATION REQUIRED			

NC-1, 11 JUL 2024 to 08 AUG 2024

NC-1, 11 JUL 2024 to 08 AUG 2024