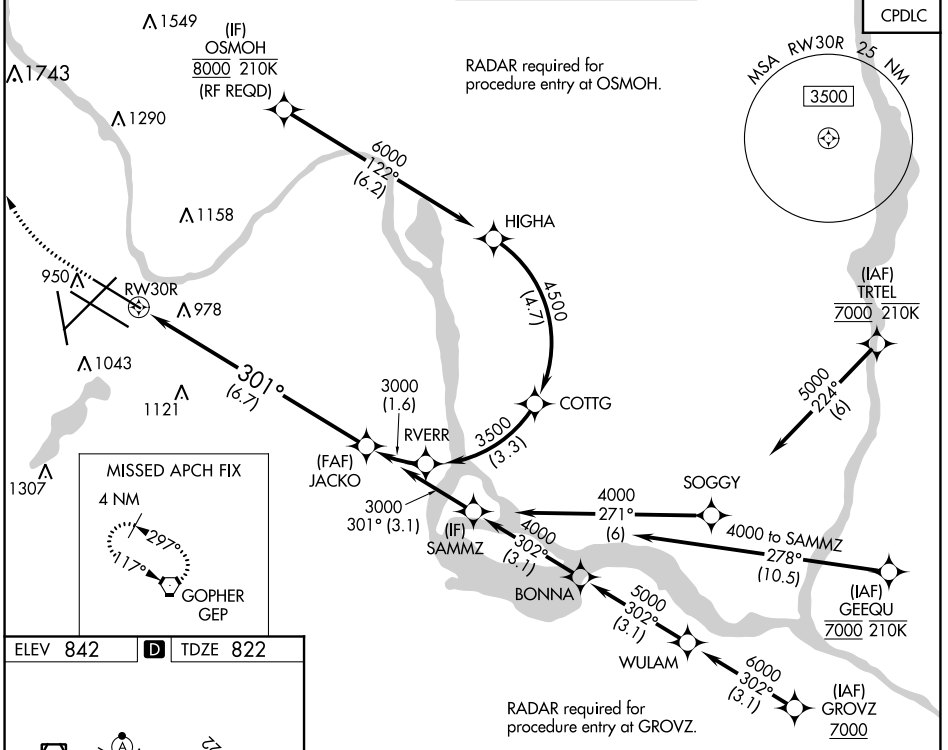


APP CRS	Rwy Idg	<b>8000</b>
<b>301°</b>	TDZE	<b>822</b>
	Apt Elev	<b>842</b>

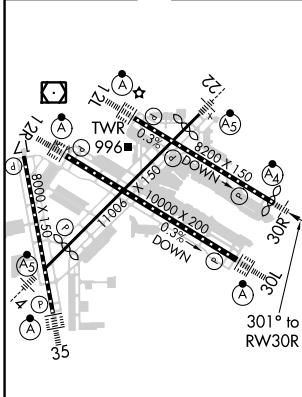
# RNAV (RNP) Y RWY 30R

MINNEAPOLIS-ST PAUL INTL/WOLD-CHAMBERLAIN (MSP)

<p><b>▼</b> For uncompensated Baro-VNAV systems, procedure NA below -1°C (-2°F) or above 54°C (130°F). Simultaneous approach authorized with Rwy 30L and ILS V RWY 35 (CONVERGING). GPS required. For inop ALS, increase RNP 0.15 all Cats visibility to RVR 4500 and RNP 0.30 Cat D visibility to 1½ SM.</p>	MALSF	MISSED APPROACH: Climb to 1300 then climbing right turn to 3000 direct GEP VORTAC and hold.	
	<p>D-ATIS ARR <b>135.35</b> 239.275 DEP <b>120.8</b></p>	<p>MINNEAPOLIS APP CON <b>118.725 335.65</b> (Rwy 35) <b>119.3 335.65</b> (12L-30R, 4-22, 17) <b>126.95 335.65</b> (12R-30L)</p>	<p>MINNEAPOLIS TOWER <b>123.675 273.55</b> (17-35) <b>123.95 273.55</b> (12L-30R) <b>126.7 273.55</b> (12R-30L, 4-22)</p>
		<p>GND CON <b>N 121.8 348.6</b> <b>S 121.9 348.6</b> <b>W 127.925 348.6</b></p>	<p>CLNC DEL <b>133.2</b></p>



ELEV 842	<b>D</b>	TDZE 822
----------	----------	----------



HIRL all Rwys  
REIL Rwy 17  
TDZ/CL Rwys 12L, 12R, 30L, and 35

1300	3000	GEP	VGSI and RNAV glidepath not coincident (VGSI Angle 3.00/TCH 71). See planview for multiple IF locations.	JACKO	3000
					GP 3.00° TCH 55

CATEGORY	A	B	C	D
RNP 0.15 DA		1097/40	275 (300-¾)	
RNP 0.30 DA		1298-1⅞	476 (500-1⅞)	

## AUTHORIZATION REQUIRED

NC-1, 11 JUL 2024 to 08 AUG 2024

NC-1, 11 JUL 2024 to 08 AUG 2024