

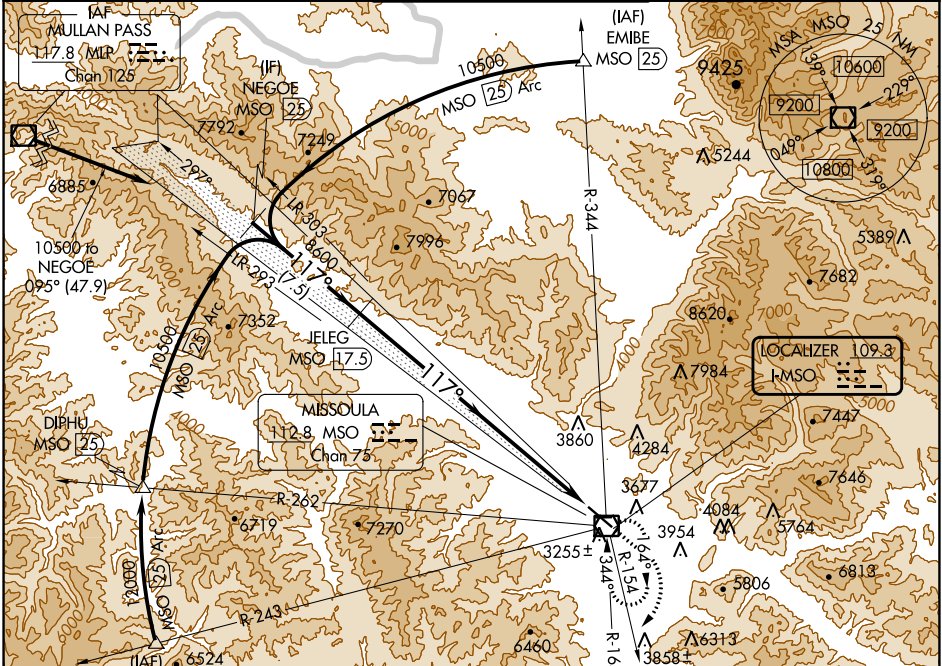
LOC I-MSO <b>109.3</b>	APP CRS <b>117°</b>	Rwy ldg TDZE Apt Elev <b>9501</b> <b>3200</b> <b>3206</b>
---------------------------	------------------------	--

# ILS Y RWY 12

MISSOULA MONTANA (MISO)

DME required.		MALSRL	MISSED APPROACH: Climb to 6200 then climbing right turn to 8500 on MSO VOR/DME R-154 then climbing left turn to 9100 direct MSO VOR/DME and hold.
NA	Inoperative table does not apply.	AS	
-12°C			

ATIS <b>126.65</b>	SPOKANE APP CON * <b>124.9 298.95</b>	MISSOULA TOWER * <b>118.4 (CTAF) 377.175</b>	GND CON <b>121.9</b>	UNICOM <b>122.95</b>
-----------------------	--	---	-------------------------	-------------------------



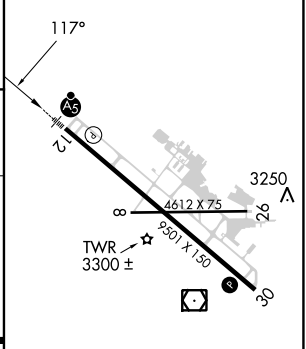
NW-1, 11 JUL 2024 to 08 AUG 2024

NW-1, 11 JUL 2024 to 08 AUG 2024

ELEV 3206	TDZE 3200
-----------	-----------



NEG OE MSO [25]	JELEG MSO [17.5]	6200	8500	9100	MSO
VGS1 and ILS glidepath not coincident (VGS1 Angle 3.00/TCH 55).					
10500		8600			
GS 3.00°		TCH 45			
7.5 NM		16.1 NM			



CATEGORY	A	B	C	D	REIL Rwy 30
S-ILS 12		5022-7	1822 (1900-7)		MIRL Rwy 8-26
					HIRL Rwy 12-30