

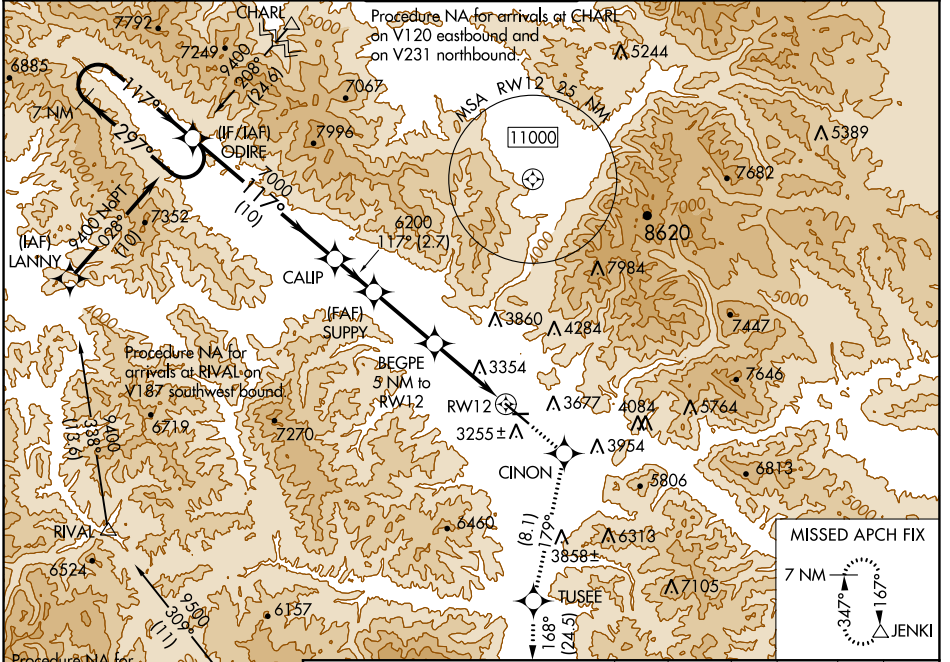
WAAS CH <b>65715</b> <b>W12B</b>	APP CRS <b>117°</b>	Rwy Idg TDZE Apt Elev	<b>9501</b> <b>3200</b> <b>3206</b>
--	------------------------	-----------------------------	---

# RNAV (GPS) Y RWY 12

MISSOULA MONTANA (MISO)

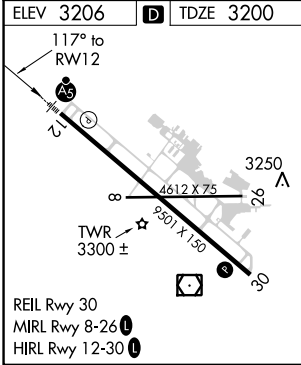
RNP APCH.	MALS R	MISSED APPROACH: (Do not exceed 200K until CINON) Climb to 2000 direct CINON and on track 179° to TUSEE and on track 168° to JENKI and hold, continue climb-in-hold to 2000. ## Missed approach requires minimum climb of 325 feet per NM to 7700.
<p>⚠ Circling N/A for Cats C and D northeast of Rwy 12-30. Inop table does not apply to LNAV # Cats C/D. Inop table does not apply to LPV † all Cats. **RVR 1800 authorized with use of FD or AP or HUD to DA.</p>		

ATIS <b>126.65</b>	SPOKANE APP CON * <b>124.9 298.95</b>	MISSOULA TOWER * <b>118.4 (CTAF) 0 377.175</b>	GND CON <b>121.9</b>	UNICOM <b>122.95</b>
-----------------------	--	---	-------------------------	-------------------------



NW-1, 11 JUL 2024 to 08 AUG 2024

NW-1, 11 JUL 2024 to 08 AUG 2024



	7 NM Holding Pattern	ODIRE	SUPPLY	BEGPE	CINON	TUSEE	JENKI
	9400	← 297° 117° →	6200	5 NM to RWY 12	tr 179°	tr 168°	△
	GP 3.00° TCH 55		*4840	*1.2 NM to RWY 12			
			10 NM	2.7 NM	4.3 NM	3.8 NM	1.2 NM
CATEGORY	A	B	C	D			
LPV DA **	3400/24		200 (200-½)				
LPV DA †	4229-4		1029 (1100-4)				
LNAV MDA ##	3640/24		440 (500-½)		3640/40		440 (500-¾)
LNAV MDA #	4520/40 1320 (1400-¾)		4520/55 1320 (1400-1)		4520-3		1320 (1400-3)
CIRCLING	4520-1¼ 1314 (1400-1¼)		4700-1½ 1494 (1500-½)		4700-3		5140-3 1934 (2000-3)