

ORF ATIS
127.15
NORFOLK APP CON
118.9 353.7



DRONE TURBOJET VERTICAL NAVIGATION PLANNING INFORMATION
Expect clearance to cross at 11000.

DEENE TURBOJET VERTICAL NAVIGATION PLANNING INFORMATION
Expect clearance to cross at FL210.

BROZE TURBOJET VERTICAL NAVIGATION PLANNING INFORMATION
Expect clearance to cross at FL190.

NOTE: RADAR required.
NOTE: DME required.

NOTE: Chart not to scale.

RALEIGH/DURHAM
117.2 RDU
Chan 119

TAR RIVER
117.8 TYI
Chan 125

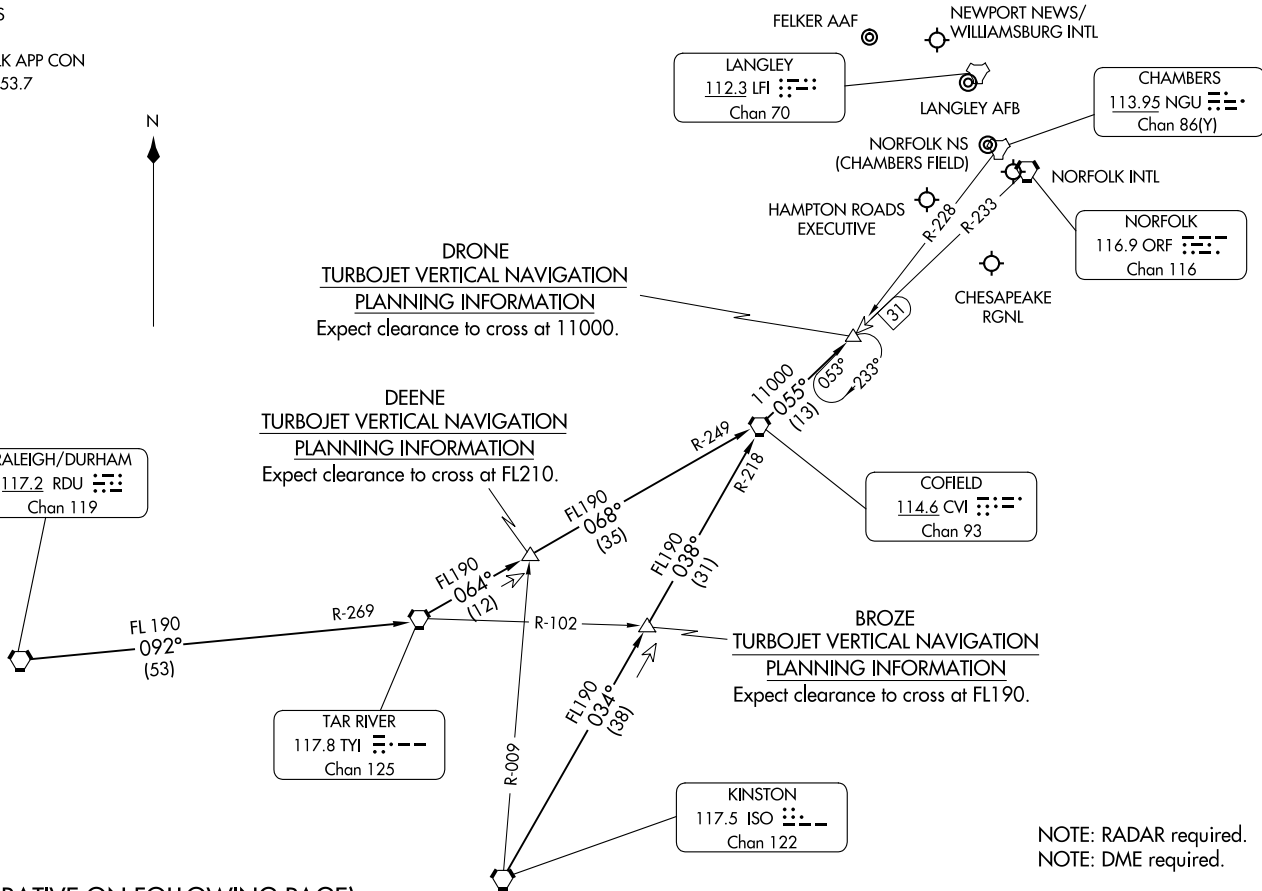
KINSTON
117.5 ISO
Chan 122

COFIELD
114.6 CVI
Chan 93

LANGLEY
112.3 LFI
Chan 70

CHAMBERS
113.95 NGU
Chan 86(Y)

NORFOLK
116.9 ORF
Chan 116



(NARRATIVE ON FOLLOWING PAGE)

ARRIVAL DESCRIPTION

KINSTON TRANSITION (ISO.DRONE2): From over ISO VORTAC on ISO R-034 and CVI R-218 to CVI VORTAC, then on CVI R-055 to DRONE. Thence. . . .

RALEIGH/DURHAM TRANSITION (RDU.DRONE2): From over RDU VORTAC on RDU R-092 and TYI R-269 to TYI VORTAC, then on TYI R-064 and CVI R-249 to CVI VORTAC, then on CVI R-055 to DRONE. Thence. . . .

...from over DRONE expect radar vectors to final approach course.

NE-3, 11 JUL 2024 to 08 AUG 2024

NE-3, 11 JUL 2024 to 08 AUG 2024