

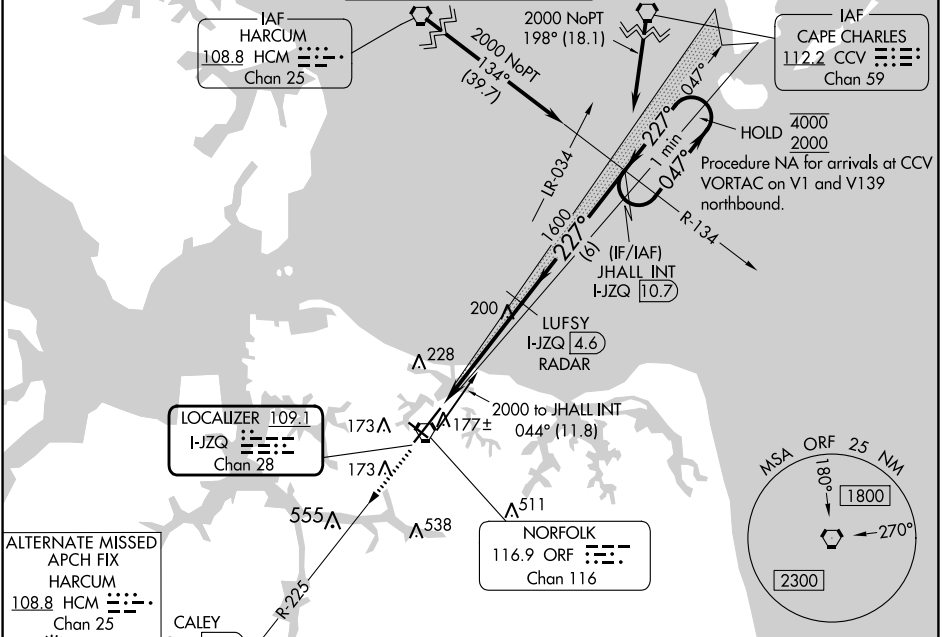
LOC/DME I-JZQ 109.1 Chan 28	APP CRS 227°	Rwy Idg TDZE Apt Elev 8995 26 27
--	------------------------	--

ILS or LOC RWY 23

NORFOLK INTL (ORF)

DME or RADAR required.		MALSR	MISSED APPROACH: Climb to 2000 on ORF VORTAC R-225 to CALEY/ORF 11.5 DME/RADAR and hold.	
------------------------	--	-------	--	--

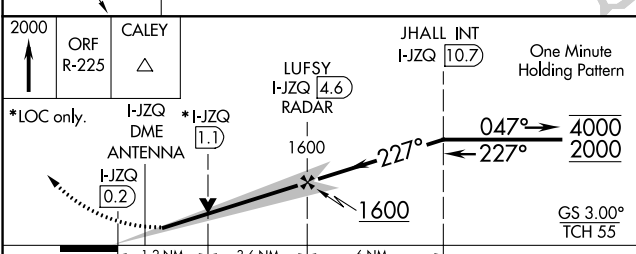
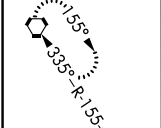
ATIS 127.15	NORFOLK APP CON 118.9 353.7	NORFOLK TOWER 120.8 257.8	GND CON 121.9	CLNC DEL 118.5
-----------------------	---------------------------------------	-------------------------------------	-------------------------	--------------------------



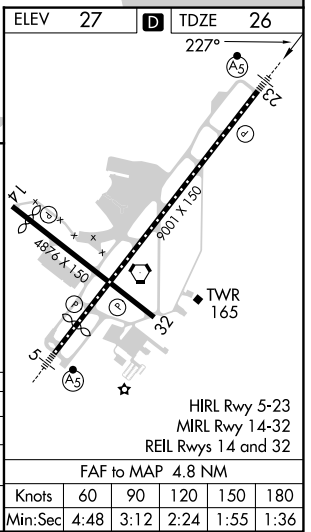
NE-3, 11 JUL 2024 to 08 AUG 2024

NE-3, 11 JUL 2024 to 08 AUG 2024

ALTERNATE MISSED APCH FIX
HARCUM
108.8 HCM
Chan 25



CATEGORY	A	B	C	D
S-ILS 23	226-1/2		200 (200-1/2)	
S-LOC 23	460-1/2	434 (500-1/2)	460-3/4	434 (500-3/4)
CIRCLING	480-1 453 (500-1)	540-1 513 (600-1)	540-1 1/2 513 (600-1 1/2)	900-2 3/4 873 (900-2 3/4)



FAF to MAP 4.8 NM					
Knots	60	90	120	150	180
Min:Sec	4:48	3:12	2:24	1:55	1:36