

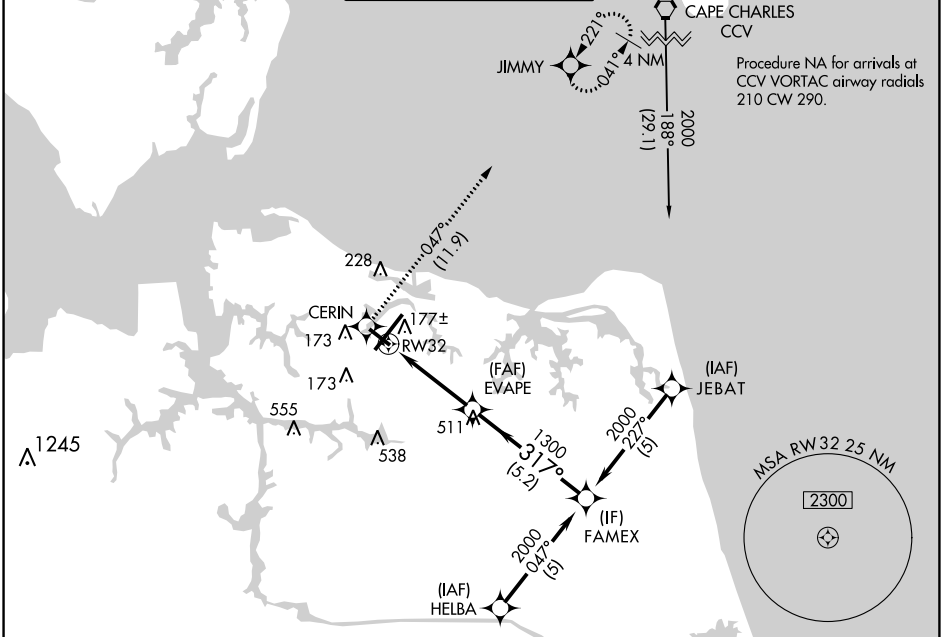
APP CRS <b>317°</b>	Rwy Idg TDZE Apt Elev	<b>3901</b> <b>25</b> <b>26</b>
------------------------	-----------------------------	---------------------------------------

# RNAV (GPS) RWY 32

NORFOLK INTL (ORF)

<b>▽</b> DME/DME RNP-0.3 NA. Helicopter visibility reduction below ¾ SM NA.	<b>▲</b> MISSED APPROACH: Climb to 2000 direct CERIN and on track 047° to JIMMY and hold.
---	---

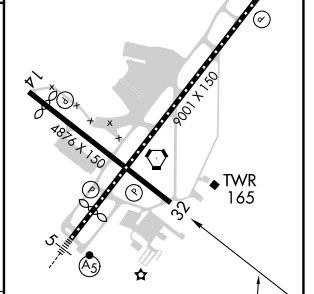
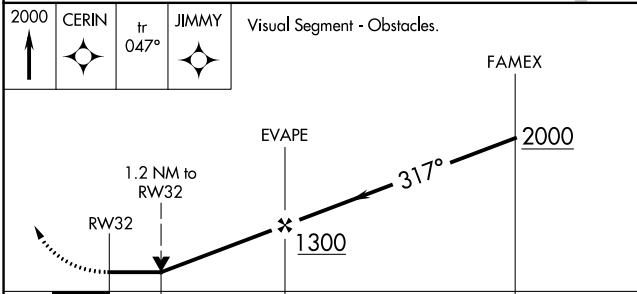
ATIS <b>127.15</b>	NORFOLK APP CON <b>118.9 353.7</b>	NORFOLK TOWER <b>120.8 257.8</b>	GND CON <b>121.9</b>	CLNC DEL <b>118.5</b>
-----------------------	---------------------------------------	-------------------------------------	-------------------------	--------------------------



Procedure NA for arrivals at SUNNS on V139 southwest bound.

SUNNS  $\swarrow$  2000 056° (23-7)

ELEV 26	<b>D</b> TDZE 25
---------	------------------



CATEGORY	A	B	C	D
LNVA MDA	440-1	415 (500-1)	440-1½	415 (500-1½)
<b>CIRCLING</b>	480-1 454 (500-1)	540-1 514 (600-1)	540-1½ 514 (600-1½)	900-2¾ 874 (900-2¾)

REIL Rwy 14 and 32  
HRL Rwy 5-23  
MRL Rwy 14-32

NE-3, 11 JUL 2024 to 08 AUG 2024

NE-3, 11 JUL 2024 to 08 AUG 2024