

# RIVER VISUAL RWY 5

AL-291 (FAA)

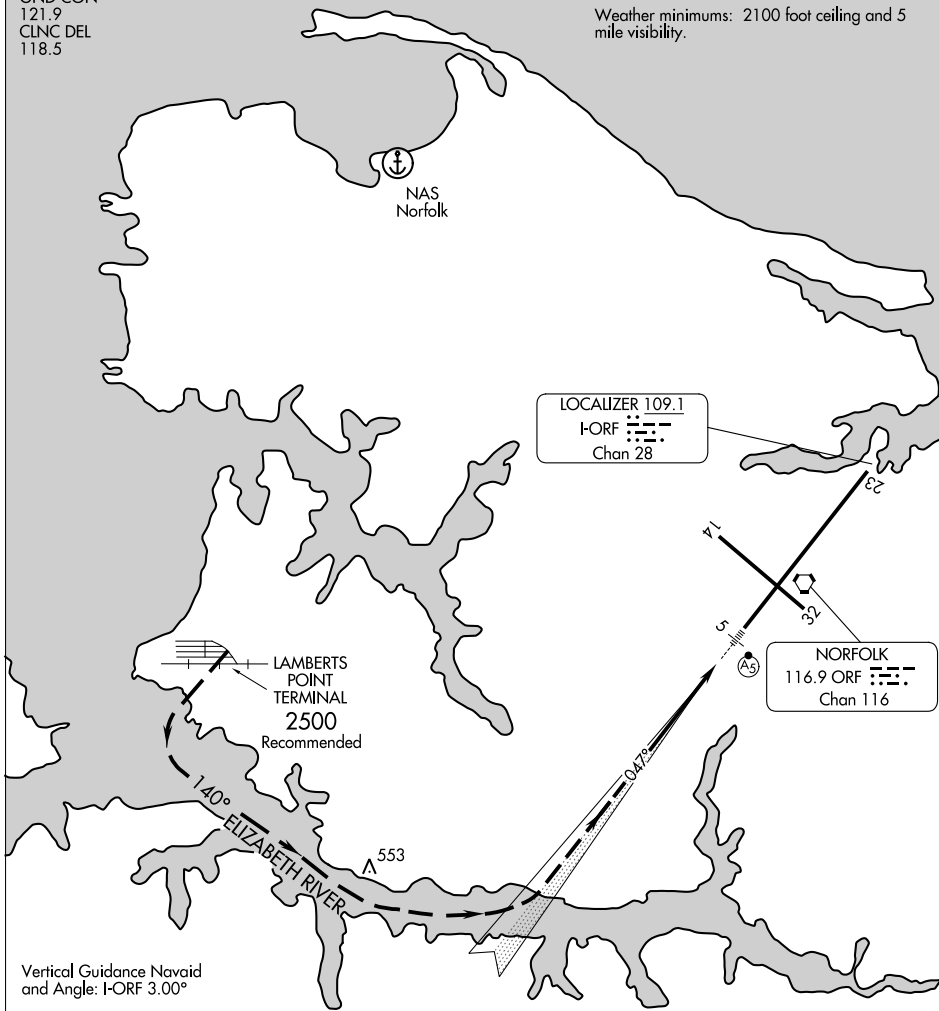
NORFOLK INTL (ORF)  
NORFOLK, VIRGINIA

ATIS 127.15  
NORFOLK APP CON  
118.9 353.7  
NORFOLK TOWER  
120.8 257.8  
GND CON  
121.9  
CLNC DEL  
118.5

Procedure not authorized at night.

## RADAR REQUIRED

Weather minimums: 2100 foot ceiling and 5 mile visibility.



NE-3, 11 JUL 2024 to 08 AUG 2024

NE-3, 11 JUL 2024 to 08 AUG 2024

|      |   |   |   |   |   |
|------|---|---|---|---|---|
| 1 NM | 2 | 3 | 4 | 5 | 6 |
|------|---|---|---|---|---|



### RIVER VISUAL RWY 5

RADAR vectors will be provided to the Lambert's Point Terminal. Proceed visually along the Elizabeth River to the extended centerline of Rwy 5. The I-ORF and MALSR are available for supplemental guidance.

# RIVER VISUAL RWY 5

Orig-A 30NOV23

36°54'N-76°12'W

NORFOLK, VIRGINIA  
NORFOLK INTL (ORF)