

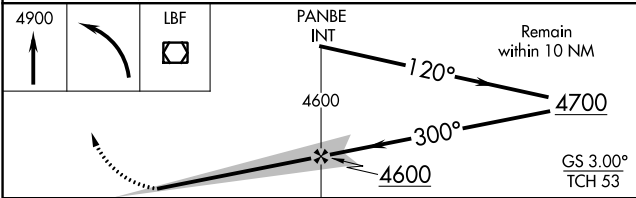
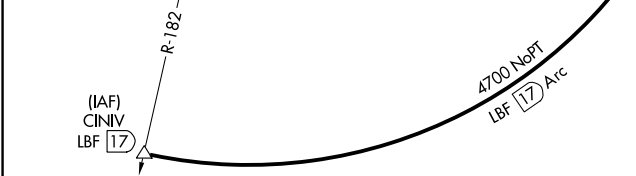
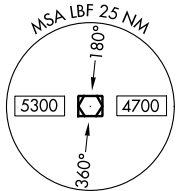
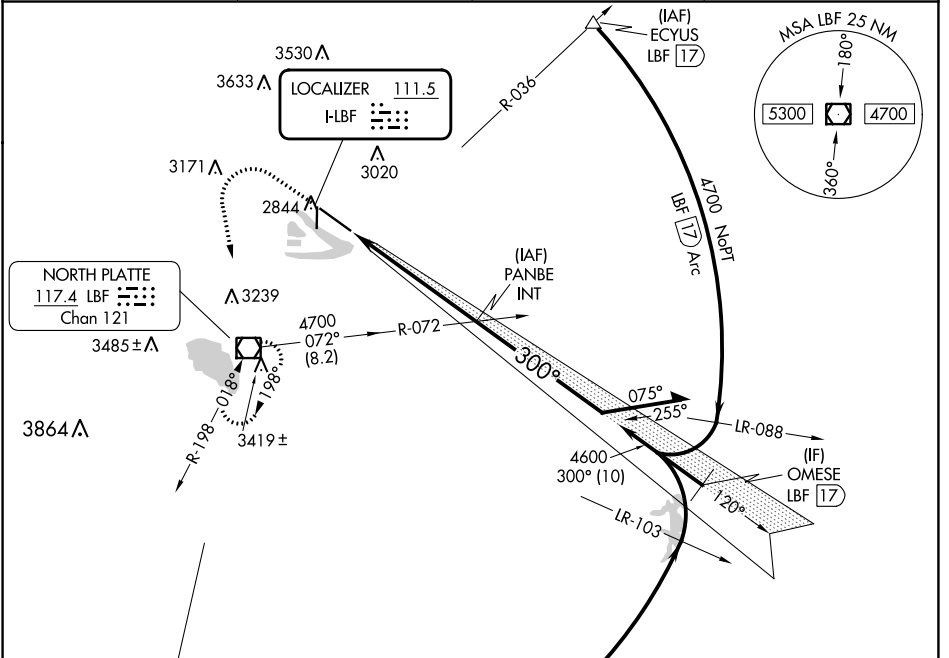
# ILS or LOC RWY 30

NORTH PLATTE RGNL/LEE BIRD FLD (LBF)

LOC I-LBF <b>111.5</b>	APP CRS <b>300°</b>	Rwy ldg TDZE <b>8001</b> 2771 Apt Elev <b>2777</b>
---------------------------	------------------------	--

**MALS**  MISSED APPROACH: Climb to 4900 then left turn direct LBF VOR/DME and hold.

ASOS <b>118.425</b>	DENVER CENTER <b>132.7 226.675</b>	CLNC DEL <b>132.7</b>	UNICOM <b>123.0 (CTAF)</b>
------------------------	---------------------------------------	--------------------------	-------------------------------



CATEGORY	A	B	C	D
S-ILS 30	2971-½ 200 (200-½)			
S-LOC 30	3200-½ 429 (500-½)		3200-¾ 429 (500-¾)	
<b>CIRCLING</b>	3280-1 503 (600-1)	3340-1 563 (600-1)	3420-1¾ 643 (700-1¾)	3560-2½ 783 (800-2½)

**ELEV 2777** **D** **TDZE 2771**

**2840**, **4700**, **4900**, **8001 X 1.50**, **35**, **30**, **300°**

**HIRL Rwy 12-30** **L**  
**REIL Rwy 35** **L**  
**MIRL Rwy 17-35** **L**

**FAF to MAP 5.6 NM**

Knots	60	90	120	150	180
Min:Sec	5:36	3:44	2:48	2:14	1:52

NC-2, 11 JUL 2024 to 08 AUG 2024

NC-2, 11 JUL 2024 to 08 AUG 2024