


APP CRS	Rwy Idg	9502
322°	TDZE	981
	Apt Elev	985

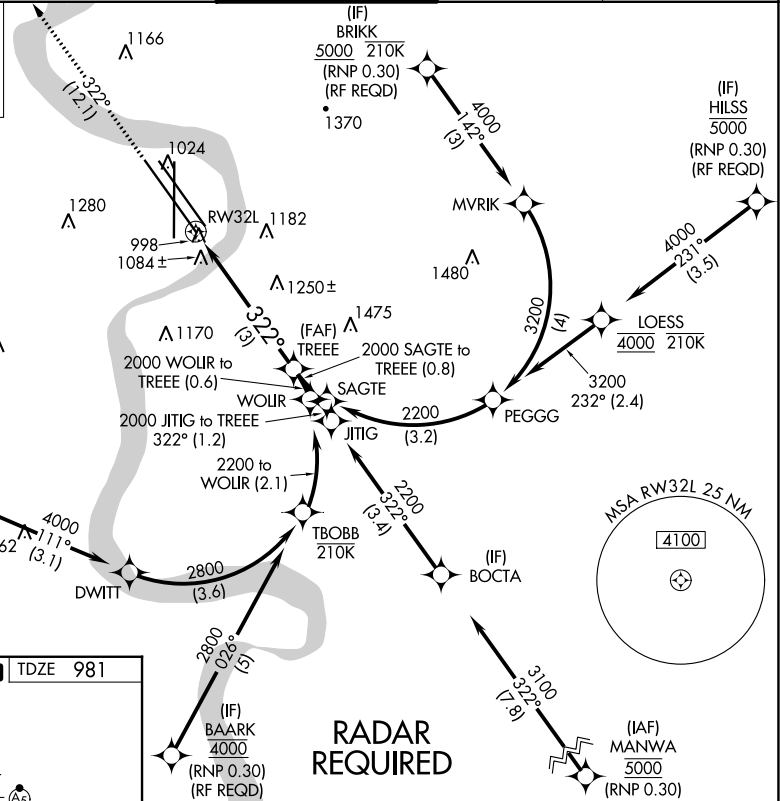
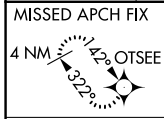
RNAV (RNP) Z RWY 32L

EPPLEY AIRFIELD (OMA)

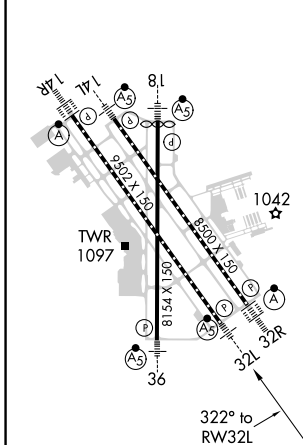
▼ For uncompensated Baro-VNAV systems, procedure NA below -19°C (-2°F) or above 54°C (130°F). When VGSI inop, procedure NA at night.
 For inoperative ALS, increase RNP 0.15 all Cats visibility to 1¼ SM and RNP 0.30 all Cats visibility to 2¼ SM. GPS required.

MALSR

MISSED APPROACH:
 Climb to 3300 on track 322° to OTSEE and hold.

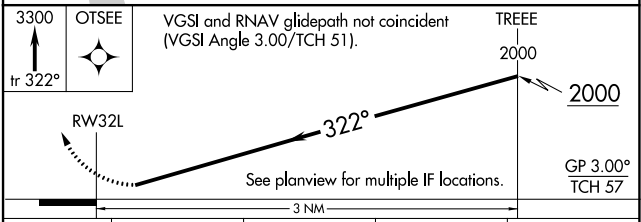
D-ATIS 120.4	OMAHA APP CON 120.1 354.05	OMAHA TOWER 132.1 256.9	GND CON 121.9	CLNC DEL 119.9
------------------------	--------------------------------------	-----------------------------------	-------------------------	--------------------------



ELEV 985	D	TDZE 981
----------	----------	----------



HIRL all Rwy
 TDZ/CL Rwy 14R and 32R



CATEGORY	A	B	C	D
RNP 0.15 DA		1359/50	378 (400-1)	
RNP 0.30 DA		1624-1¾	643 (700-1¾)	

AUTHORIZATION REQUIRED

NC-2, 11 JUL 2024 to 08 AUG 2024

NC-2, 11 JUL 2024 to 08 AUG 2024