

HI-ILS or LOC RWY 25

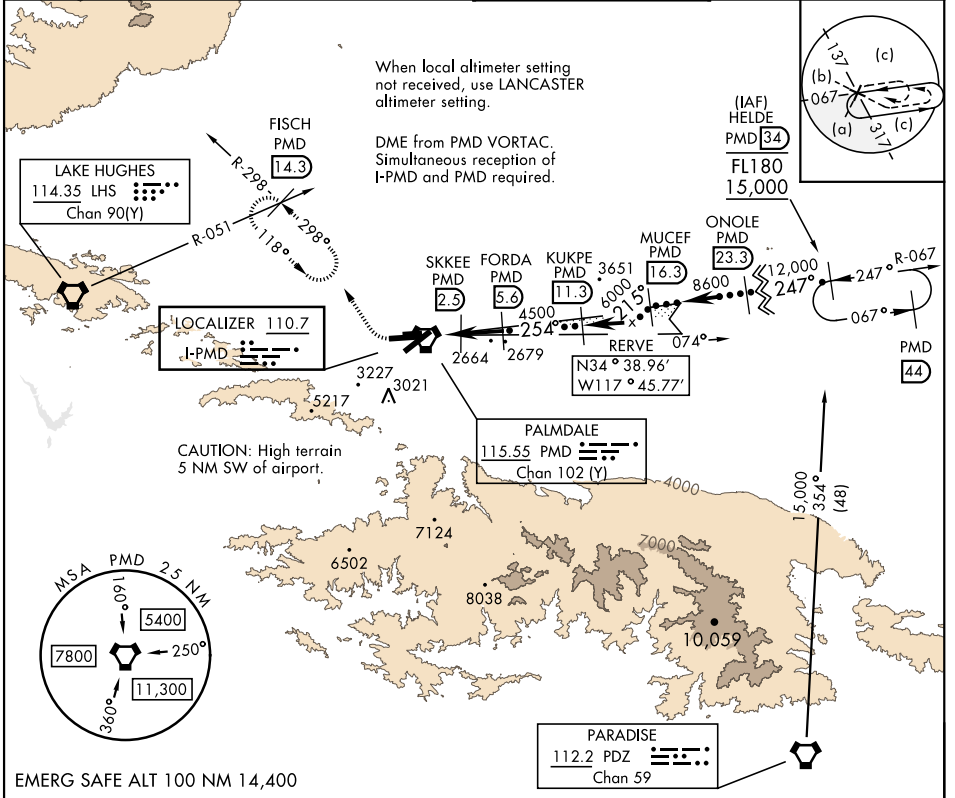
LOC I-PMD 110.7	APCH CRS 254°	Rwy Idg 12,002 TDZE 2503 Arprt Elev 2543
---------------------------	-------------------------	---

AL-310 [USAF]

PALMDALE USAF PLANT 42 (KPMD)

DME required.	MISSED APPROACH: Climb to 3000 then climbing right turn on heading 318° and PMD VORTAC R-298 to FISCH INT/PMD 14.3 DME/RADAR and hold, continue climb-in-hold to 6700.
---------------	--

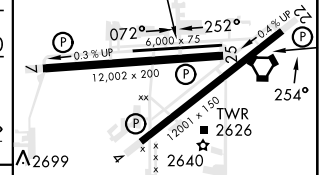
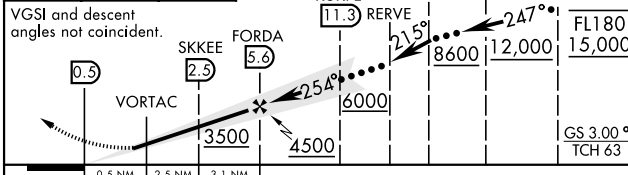
ATIS 118.275	JOSHUA APP CON 124.55 363.0	TOWER* 123.7 (CTAF) 0 317.6	GND CON 121.9 317.6
------------------------	---------------------------------------	---------------------------------------	-------------------------------



SW-3, 11 JUL 2024 to 08 AUG 2024

SW-3, 11 JUL 2024 to 08 AUG 2024

3000	6700	PMD R-298	ELEV 2543	TDZE 2503
------	------	-----------	-----------	-----------



CATEGORY	C	D	E	HIRL Rwy 4-22, 7-25	REIL Rwy 4, 22, 7, 25
S-ILS 25		2703-¾	200 (200-¾)		
S-LOC 25		2820-7/8	317 (300-7/8)		
CIRCLING*	3140-1½ 597 (600-1½)	3740-3 1197 (1200-3)	3760-3 1217 (1300-3)	FAF to MAP 6.1 NM	
				Knots	60 90 120 150 180
				Min:Sec	6:06 4:04 3:03 2:26 2:02

HI-ILS or LOC RWY 25